



零件目录图册

PARTS CATALOGUE

JS150-3型摩托车



重庆建设摩托车股份有限公司
CHONGQING JIANSHE MOTORCYCLE CO.,LTD

零件目录图册

PARTS CATALOGUE

JS150-3型摩托车

成车颜色 Into a car color	颜色代码 Color code
红色 Red	A38
黑色 Black	B07
蓝色 Blue	E37
灰色 Gray	H33
透明红 Transparent Red	A22
珠光金黄 Golden Pearl	C12



编制说明

- ▶本册为JS150-3成车零部件目录图册,零部件目录图册是根据摩托车的安装配置顺序进行编辑,用于客户订购零件时参考。
- ▶欲知某零件的名称、件号或装配关系,可按零件形状,在有关的插图中查找,即可知名称、数量、状态、是否维修(“Y”为是,“N”为否)、重量、属性(零件材质):Metal-金属(合金钢)、Aluminium-铝、Rubber-橡胶、Plastic-塑料、Asbestos-石棉、备注(该零件安装的位置或其他)。
- ▶此图册中发动机只体现总成,具体发动机、消声器及空滤器组件请参考F25发动机零件图册。
- ▶索引由件号和图号组成,件号按照A、B、C、D……顺序排列。根据件号可查找其图号。
- ▶温馨提示:此图册中的图形仅供参考,一切以实物为准。如有零件变动,不另行通知。

Compilation

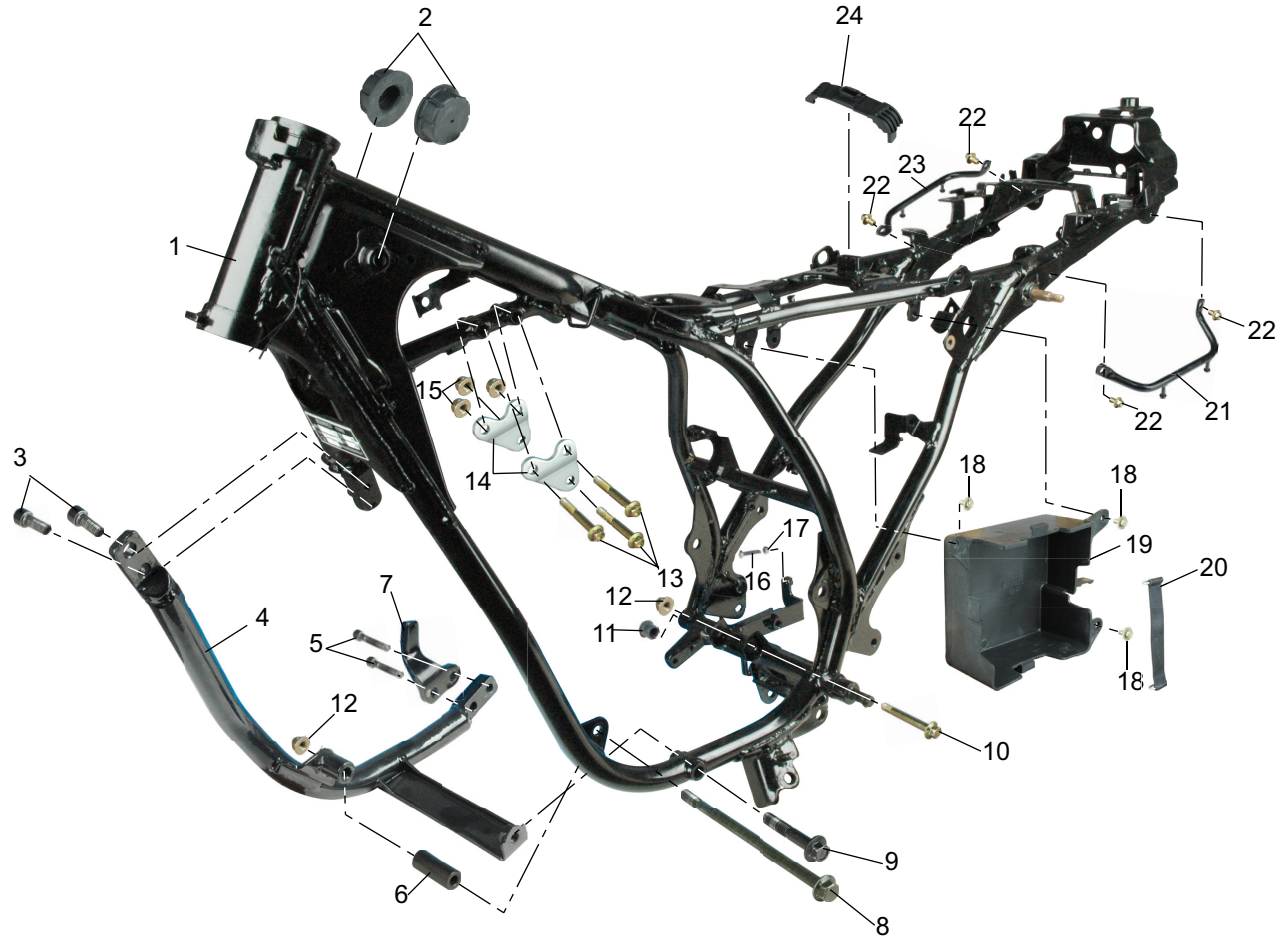
- ▶This book forJS150-3into the car parts catalog books, spare parts inventory atlas is based on motorcycles in order to edit the installation configuration for the customer order parts reference.
- ▶For a parts name, parts number or assembly relationship, according to part shape, in the illustrations in the search, you can know the name, number, status, whether the maintenance ("Y" is yes, "N" for no), weight, property (part material): Metal-metal (alloy steel), Aluminium-Aluminum, Rubber-Rubber, Plastic-Plastic, Asbestos-asbestos, Notes (the parts installed location or other).
- ▶This atlas is only reflected in the engine assembly, a specific engine, muffler and air filter components please refer to F25 Atlas engine parts.
- ▶Index numbers and drawing numbers from the pieces of the composition, piece number in accordance with A, B, C, D order. According to its plan to find pieces of ID numbers can be.
- ▶Warm Tip: The graphics in this atlas for reference only, and all kind prevail. If spare parts to change without notice.

目录

Contents

1.车架Frame.....	2
2.发动机、消声器、空滤器Engine, muffler, air filter.....	4
3.二次补气装置Secondary air supplement unit.....	6
4.挡泥板Mudguards.....	8
5.侧盖Side Cover.....	10
6.尾罩End cover.....	12
7.方向把操纵The direction of the manipulation of.....	16
8.手把开关Handle Switch.....	20
9.前叉Fork.....	22
10.后轮悬挂Rear Suspension.....	26
11.主支架Main stand.....	30
12.油箱Tank.....	36
13.座垫Cushion.....	40
14.前轮Front.....	42
15.后轮Rear.....	44
16.仪表Instrumentation.....	48
17.前照灯Headlamps.....	50
18.转向灯Turn lights.....	52
19.尾灯Taillight.....	54
20-1.电器Electric.....	56
20-2.电器Electric.....	58
零件号码索引Parts No Index Chart.....	60

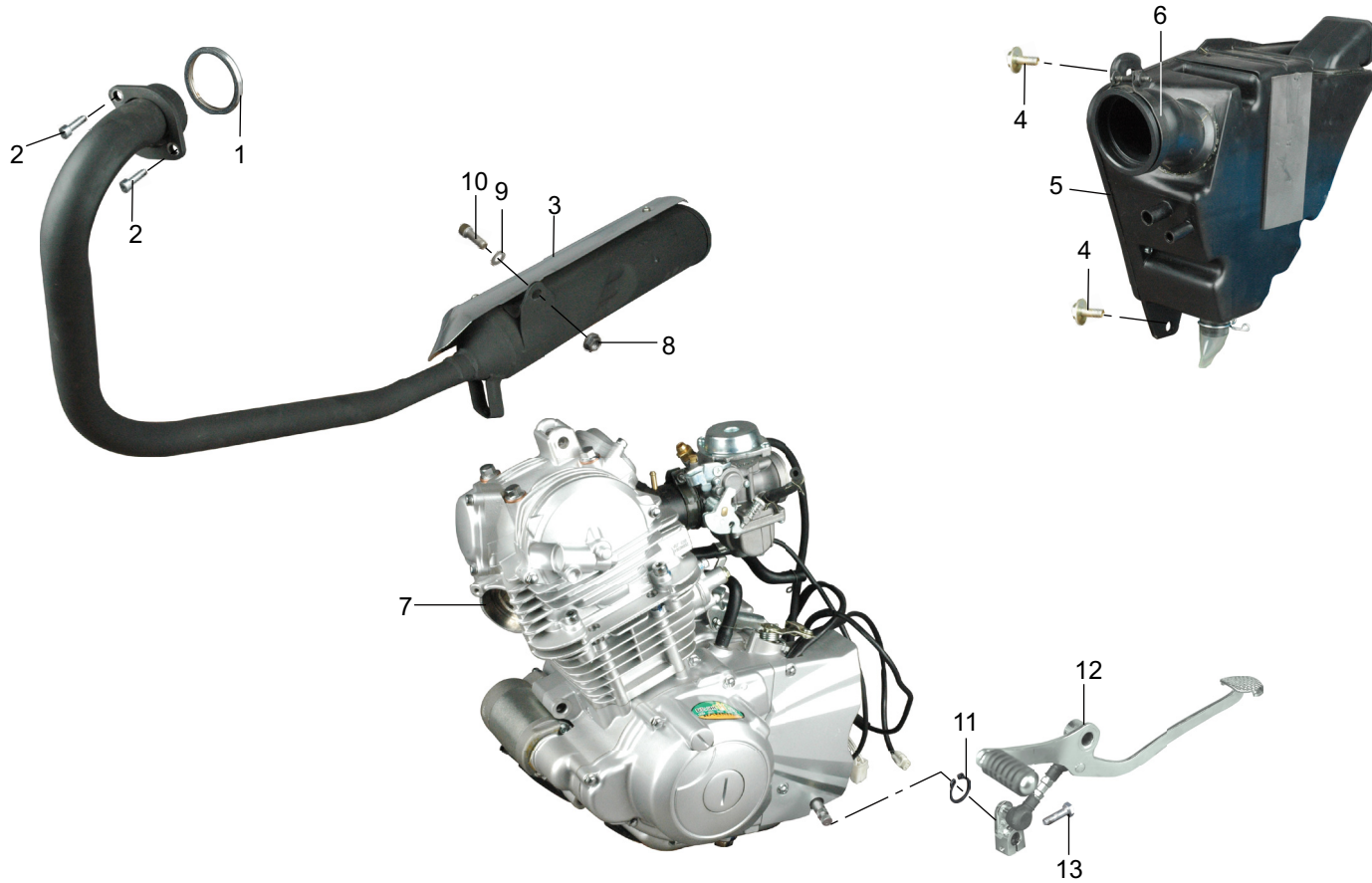
1. Frame



1. 车架

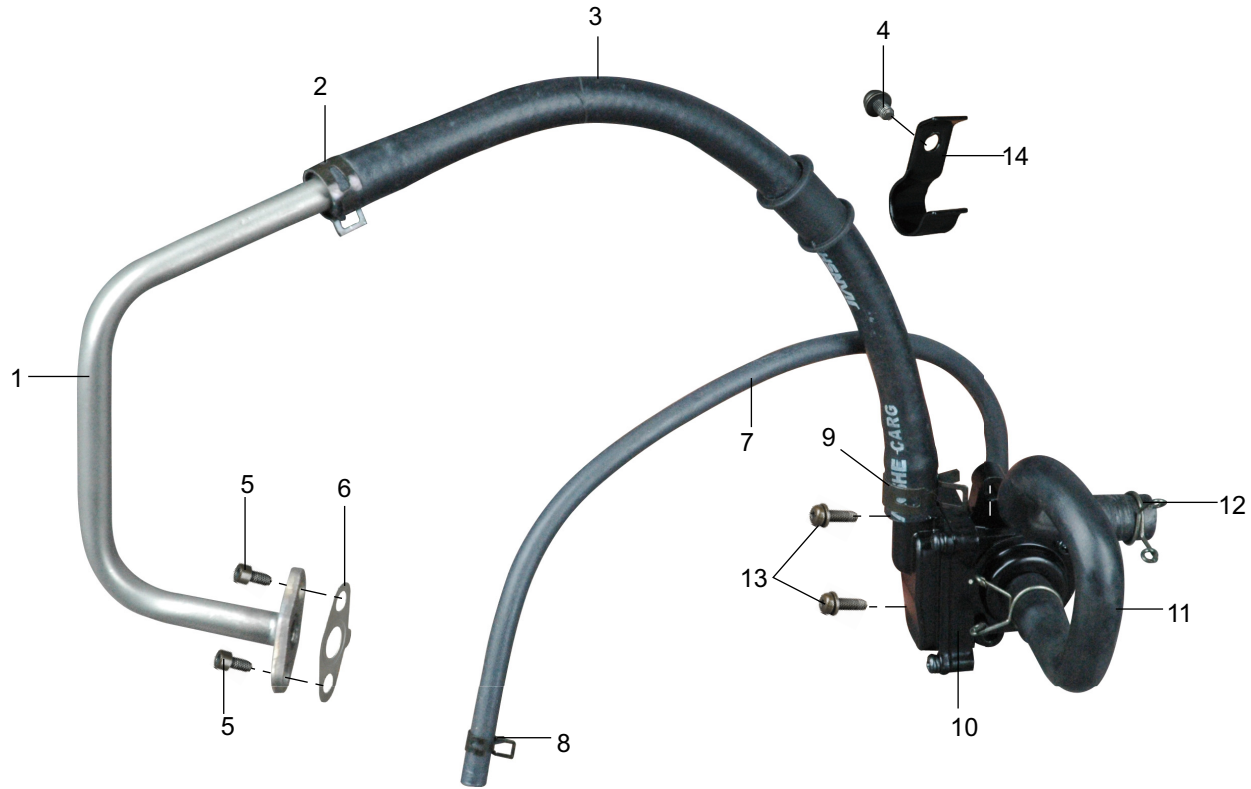
序号 No.	零件代号 Part code	零件名称 Part Name	数量 Amount	是否 维修 Y/N Mainte- nance	重量 Weight	属性 Property	备注 Notes
1	CF3-100000-0	车架 Frame	1	Y	12.09	Metal	
2	CA0-000603-0	定位防震垫1 Positioning a shockproof pad	2	Y	0.023	Rubber	
3	BGB/T70.1-M8×20-37	内六角圆柱头螺钉 Hexagon socket head cap screws	2	Y	0.0115	Metal	
4	CF0-024000-0	下管组合1 Combination of a down tube	1	Y	1.13	Metal	
5	BGB/T70.1-M8×40-37	内六角圆柱头螺钉 Hexagon socket head cap screws	2	Y	0.0175	Metal	
6	CF0-000015-0	发动机安装衬套 Engine installation bush	1	Y	0.0795	Metal	
7	CF0-010000-0	反冲起动限位块 Kick-start limit block	1	Y	0.1025	Metal	
8	CF0-000004-0	发动机安装螺栓2 The engine mounting bolt 2	1	Y	0.0635	Metal	
9	BGB/T16674.1-M10×55-37	六角法兰面螺栓 Hexagon flange bolts	1	Y	0.043	Metal	
10	JS150-00-51	发动机安装螺栓1 Engine mounting bolt 1	1	Y	0.0305	Metal	
11	JS150-00-30	车架胶塞 Frame Stopper	1	Y	0.003	Rubber	
12	BGB/T6187.1-M8-32	全金属法兰面锁紧螺母 All-metal flange locking nut	2	Y	0.008	Metal	
13	BGB/T16674.1-M8×55-32	六角法兰面螺栓 Hexagon flange bolts	3	Y	0.0255	Metal	
14	JS150-00-15	缸盖固定板 Cylinder head fixed plate	2	Y	0.062	Metal	
15	BGB/T6187.1-M8-32	全金属法兰面锁紧螺母 All-metal flange locking nut	3	Y	0.009	Metal	
16	BGB/T5783-M6×30-37	六角头螺栓 Hexagon head bolt	1	Y	0.0075	Metal	
17	BGB/T6170-M6-37	1型六角螺母 Type 1 Hexagon nut	1	Y	0.0008	Metal	
18	BGB/T9074.1-M6×16S2L-32	螺栓垫圈组合 Bolt washer combination	3	Y	0.005	Metal	
19	CF0-000503-0	蓄电池盒 Battery Box	1	Y	0.1595	Plastic	
20	CA0-006000-0	蓄电池箍带 Battery hoop with	1	Y	0.0135	Rubber	
21	CF0-012000-0	左扶手 Left arm	1	Y	0.18	Metal	
22	BGB/T16674.1-M8×12-32	六角法兰面螺栓 Hexagon flange bolts	4	Y	0.01	Metal	
23	CF0-013000-0	右扶手 Right arm	1	Y	0.18	Metal	
24	CF0-000605-0	防震垫 Shock Pad 1 tank location	1	Y	0.0635	Rubber	

2. Engine, muffler, air filter



序号 No.	零件代号 Part code	零件名称 Part Name	数量 Amount	是否 维修 Y/N Mainte- nance	重量 Weight	属性 Property	备注 Notes
1	F25-701000-0	排气管衬垫1 An exhaust pipe gasket	1	Y	0.008	Meta1	
2	BGB/T70.1-M6×20-36	内六角圆柱头螺钉 Hexagon socket head cap screws	2	Y	0.0065	Meta1	
3	CF1-730000-0	排气消声器总成 Exhaust muffler ASSY	1	Y	6.3	Meta1	
4	BGB/T9074.1-M6×16S2L-32	螺栓和平垫圈组合 Bolt with washer	3	Y	0.008	Meta1	
5	CF1-710000-0	空气滤清器总成 Air Filter Assembly	1	Y	0.84	Plastic	
6	CF1-714000-0	管夹 Pipe clip	1	Y	0.013	Meta1	
7	JS157FMJ-01	F25电感式发动机总成 F25 inductive engine assembly	1	Y	33.86		
8	BGB/T6177.1-M10-37	六角法兰面螺母 Hexagon flange nut	1	Y	0.075	Meta1	
9	BGB/T97.1-10-37	平垫圈 Flat washer	1	Y	0.0025	Meta1	
10	BGB/T70.1-M10×30-37	内六角圆柱头螺钉 Hexagon socket head cap screws	1	Y	0.025	Meta1	
11	BGB/T894.1-12-37	轴用弹性挡圈 Axial Spring Collar	1	Y	0.005	Meta1	
12	CF0-019000-0	换挡组合 Shift combination	1	Y	0.39		
13	BGB/T5783-M6×20-36	六角头螺栓 Hexagon head bolt	1	Y	0.006	Meta1	

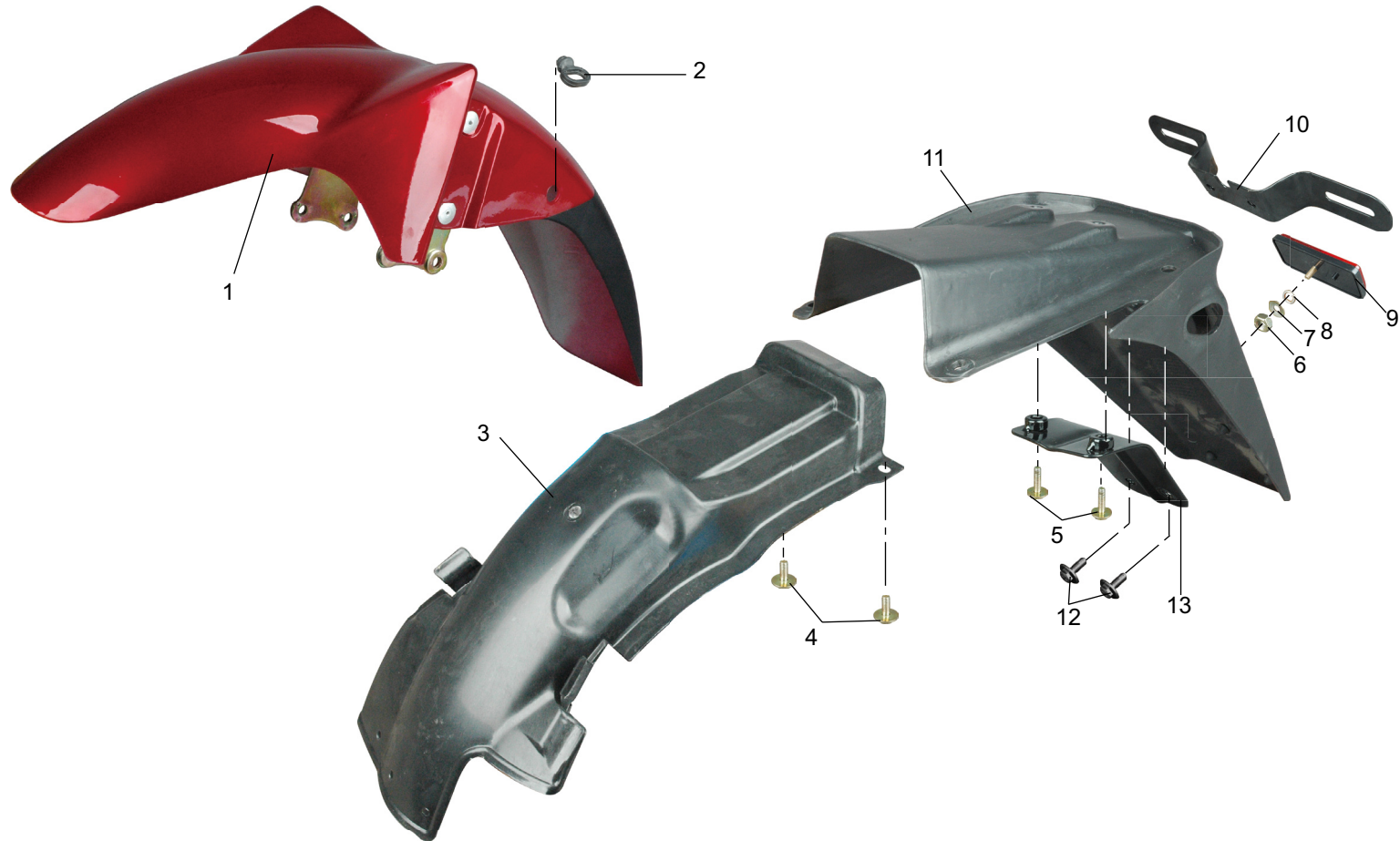
3. Secondary air supplement unit



3. 二次补气装置

序号 No.	零件代号 Part code	零件名称 Part Name	数量 Amount	是否 维修 Y/N Mainte- nance	重量 Weight	属性 Property	备注 Notes
1	CF1-761000-0	管2组合 Tube 2 Portfolio	1	Y	0.061	Meta1	
2	CF1-760701-0	卡箍1 Clamp 1	1	Y	0.003	Meta1	
3	CF1-763000-0	弯管1组合 Bend a combination of	1	Y	0.052	Rubber	
4	BGB/T9074.1-M6×12S3N-07	螺钉和平垫圈组合件 Screw with washer	1	Y	0.004	Meta1	
5	BGB/T70.1-M6×12-37	内六角圆柱头螺钉 Hexagon socket head cap screws	2	Y	0.005	Meta1	
6	F25-760401-0	垫片 Gasket	1	Y	0.0005	Meta1	
7	CF1-760602-0	软管 Hoses	1	Y	0.017	Rubber	
8	CF1-760702-0	卡箍2 Clamp 2	2	Y	0.0003	Meta1	
9	CF1-760703-0	卡箍3 Clamp 3	1	Y	0.002	Meta1	
10	CF1-762000-0	二次补气阀 Second fill valve	1	Y	0.1625	Meta1	
11	CF1-760601-0	弯管2 Bend 2	1	Y	0.0285	Meta1	
12	CF1-760704-0	钢丝夹 Wire clip	2	Y	0.0004	Meta1	
13	BGB/T9074.1-M6×20S3N-07	螺钉和平垫圈组合件 Screw with washer	2	Y	0.0065	Meta1	
14	CF1-760401-0	弯管1支架 Bend a stent	1	Y	0.0115	Meta1	

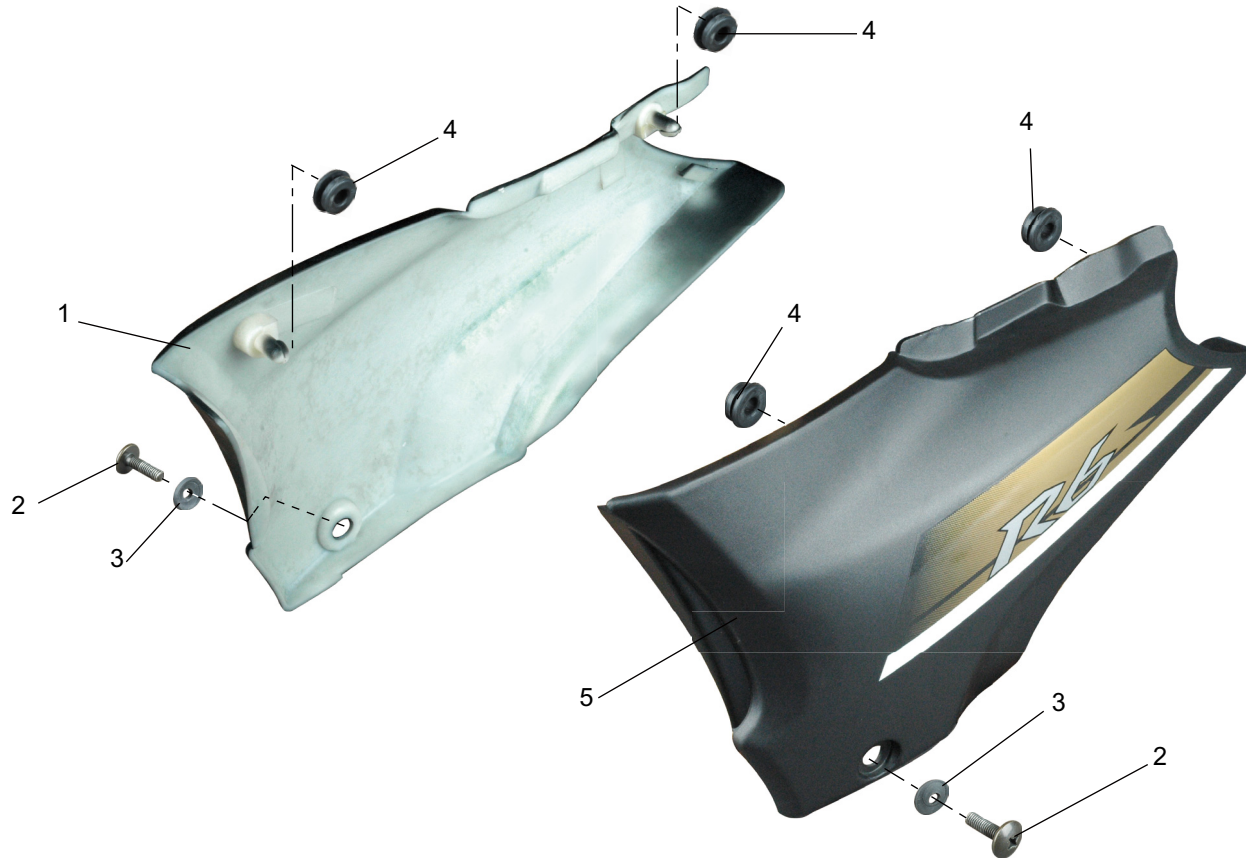
4. Mudguards



4. 挡泥板

序号 No.	零件代号 Part code	零件名称 Part Name	数量 Amount	是否 维修 Y/N Mainte- nance	重量 Weight	属性 Property	备注 Notes
1	CF0-017000-0-0T0A38	前挡泥板组合	1	Y	0.67	红色	Red
	CF0-017000-0-0T0A22	前挡泥板组合	1	Y	0.67	透明红	Transparent Red
	CF0-017000-0-0T0B07	前挡泥板组合	1	Y	0.67	黑色	Black
	CF0-017000-0-0T0E37	前挡泥板组合	1	Y	0.67	蓝色	Blue
	CF0-017000-0-0T0H33	前挡泥板组合	1	Y	0.67	灰色	Gray
	CF0-017000-0-0T0C12	前挡泥板组合	1	Y	0.67	珠光金黄	Golden Pearl
2	ZAO-000504-0	护线圈	1	Y	0.0085	Rubber	
3	CF0-000502-0	后挡泥板前板	1	Y	0.025	Plastic	
4	BGB/T9074.1-M6×16S2L-32	螺栓和平垫圈组合件	2	Y	0.0075	Metal	
5	BGB/T9074.1-M6×25S2L-32	螺栓和平垫圈组合件	2	Y	0.0075	Metal	
6	BGB/T6170-M5-21	I型六角螺母	1	Y	0.0003	Metal	
7	BGB/T96.1-5-31	大垫圈	1	Y	0.0003	Metal	
8	BGB/T93-5-B1	标准型弹簧垫圈	1	Y	0.0003	Metal	
9	QB0-011000-0	后反光片	1	Y	0.0185		
10	CA0-025000-0	后牌照支架组合	1	Y	0.0805	Metal	
11	CF0-000501-0	后挡泥板	1	Y	0.29	Plastic	
12	BGB/T9074.1-M6×16S2L-37	螺栓和平垫圈组合件	2	Y	0.009	Metal	
13	CF0-014000-0	后挡泥支承	1	Y	0.202	Metal	

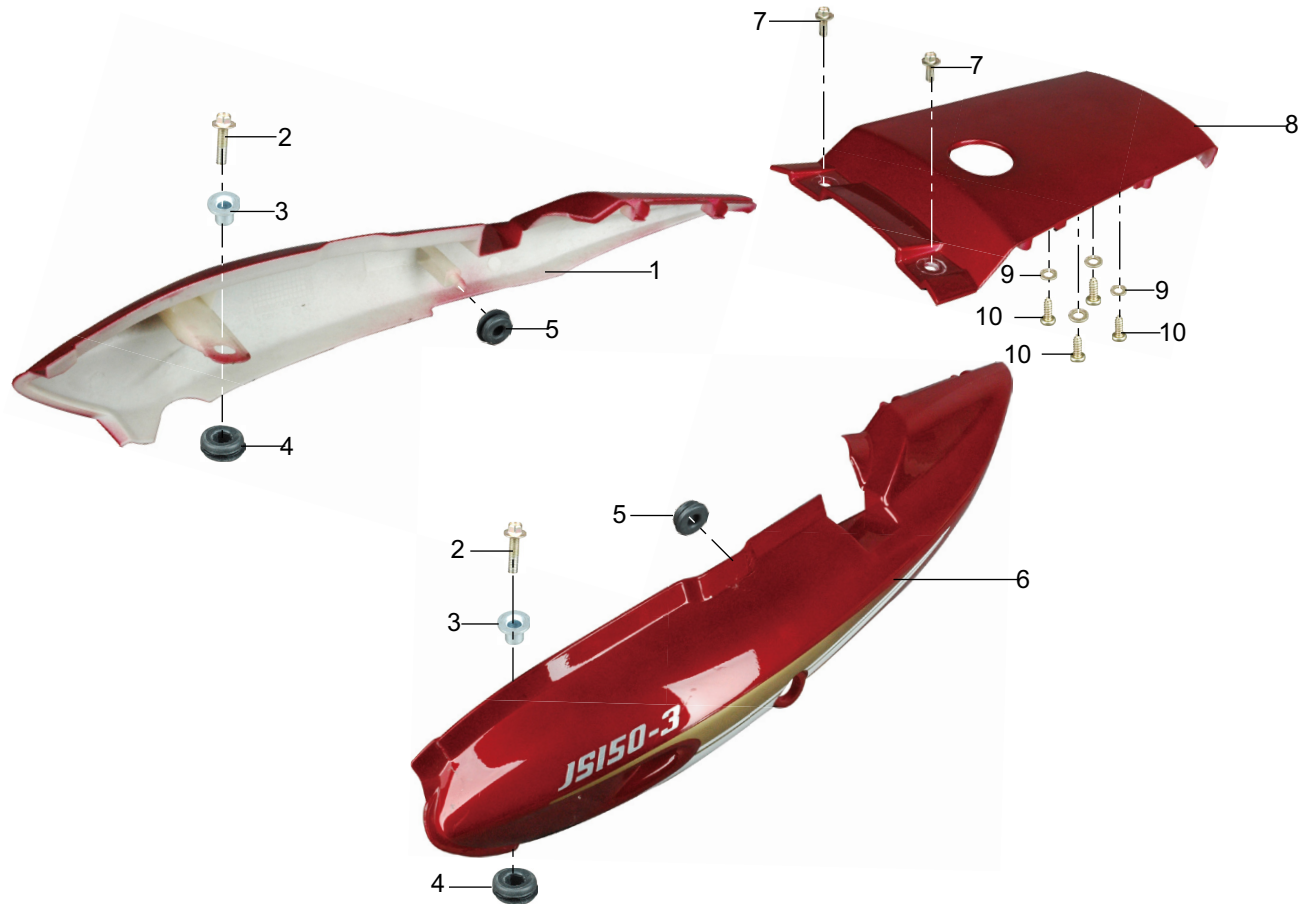
5. Side Cover



5. 侧盖

序号 No.	零件代号 Part code	零件名称 Part Name	数量 Amount	是否 维修 Y/N Mainte- nance	重量 Weight	属性 Property	备注 Notes	
1	CF0-004000-0-0T0B08	右侧盖(哑黑)	The right side cover (matte black)	1	Y	0.191	Plastic	成车颜色:红色\珠光金黄 Into the car color: red \ yellow pearl
	CF0-004000-0-0T0C12	右侧盖(黄色)	The right side cover (yellow)	1	Y	0.191	Plastic	成车颜色:黑色\蓝色\灰色\透明红 Into the car color: black \ blue \ gray \ Transparent Red
2	CF0-000021-0	大圆柱头螺钉	Great Circle stigma screw	2	Y	0.0075	Metal	
3	ZF0-000601-0	胶垫	Pad	2	Y	0.0005	Rubber	
4	CF0-000602-0	胶垫1	Pad 1	4	Y	0.0025	Rubber	
5	CF0-003000-0-0T0B08	左侧盖(哑黑)	The left side cover (matte black)	1	Y	0.191	Plastic	成车颜色:红色\珠光金黄 Into the car color: red \ yellow pearl
	CF0-004000-0-0T0C12	左侧盖(黄色)	The left side cover (yellow)	1	Y	0.191	Plastic	成车颜色:黑色\蓝色\灰色\透明红 Into the car color: black \ blue \ gray \ Transparent Red

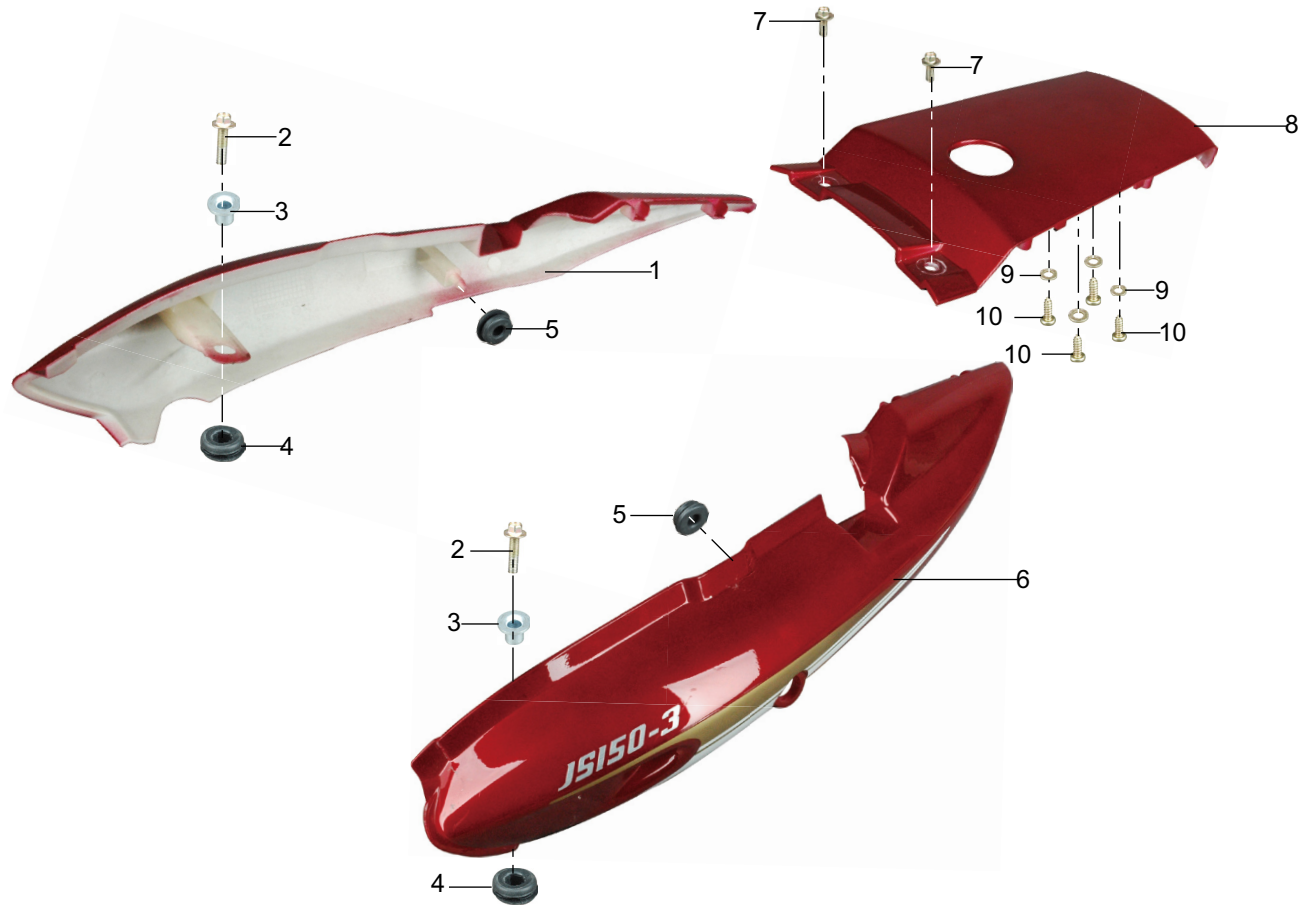
6. End cover



6. 尾罩

序号 No.	零件代号 Part code	零件名称 Part Name	数量 Amount	是否 维修 Y/N Main- tenance	重量 Weight	属性 Property	备注 Notes	
1	CF0-006000-0-0T0A38	右尾罩组合	1	Y	0.27	Plastic	红色	Red
	CF0-006000-0-0T0A22	右尾罩组合	1	Y	0.27	Plastic	透明红	Transparent Red
	CF0-006000-0-0T0B07	右尾罩组合	1	Y	0.27	Plastic	黑色	Black
	CF0-006000-0-0T0E37	右尾罩组合	1	Y	0.27	Plastic	蓝色	Blue
	CF0-006000-0-0T0H33	右尾罩组合	1	Y	0.27	Plastic	灰色	Gray
	CF0-006000-0-0T0C12	右尾罩组合	1	Y	0.27	Plastic	珠光金黄	Golden Pearl
2	BGB/T16674.1-M6×25-32	六角法兰面螺栓	2	Y	0.008	Metal		
3	ZA0-000407-0	衬套	2	Y	0.003	Metal		
4	ZA0-000603-0	护孔环	2	Y	0.0025	Rubber		
5	CF0-000602-0	胶垫1	2	Y	0.27	Rubber		
6	CF0-005000-0-0T0A38	左尾罩组合	1	Y	0.27	Plastic	红色	Red
	CF0-005000-0-0T0A22	左尾罩组合	1	Y	0.27	Plastic	透明红	Transparent Red
	CF0-005000-0-0T0B07	左尾罩组合	1	Y	0.27	Plastic	黑色	Black
	CF0-005000-0-0T0E37	左尾罩组合	1	Y	0.27	Plastic	蓝色	Blue
	CF0-005000-0-0T0H33	左尾罩组合	1	Y	0.27	Plastic	灰色	Gray
	CF0-005000-0-0T0C12	左尾罩组合	1	Y	0.27	Plastic	珠光金黄	Golden Pearl
7	BGB/T16674.1-M6×16-32	六角法兰面螺栓	2	Y	0.006	Metal		
8	CF0-000511-0-0T0A38	尾盖	1	Y	0.067	Plastic	红色	Red
	CF0-000511-0-0T0A22	尾盖	1	Y	0.067	Plastic	透明红	Transparent Red
	CF0-000511-0-0T0B07	尾盖	1	Y	0.067	Plastic	黑色	Black
	CF0-000511-0-0T0E37	尾盖	1	Y	0.067	Plastic	蓝色	Blue
	CF0-000511-0-0T0H33	尾盖	1	Y	0.067	Plastic	灰色	Gray
	CF0-000511-0-0T0C12	尾盖	1	Y	0.067	Plastic	珠光金黄	Golden Pearl
9	BGB/T97.1-5-32	平垫圈	4	Y	0.001	Metal		

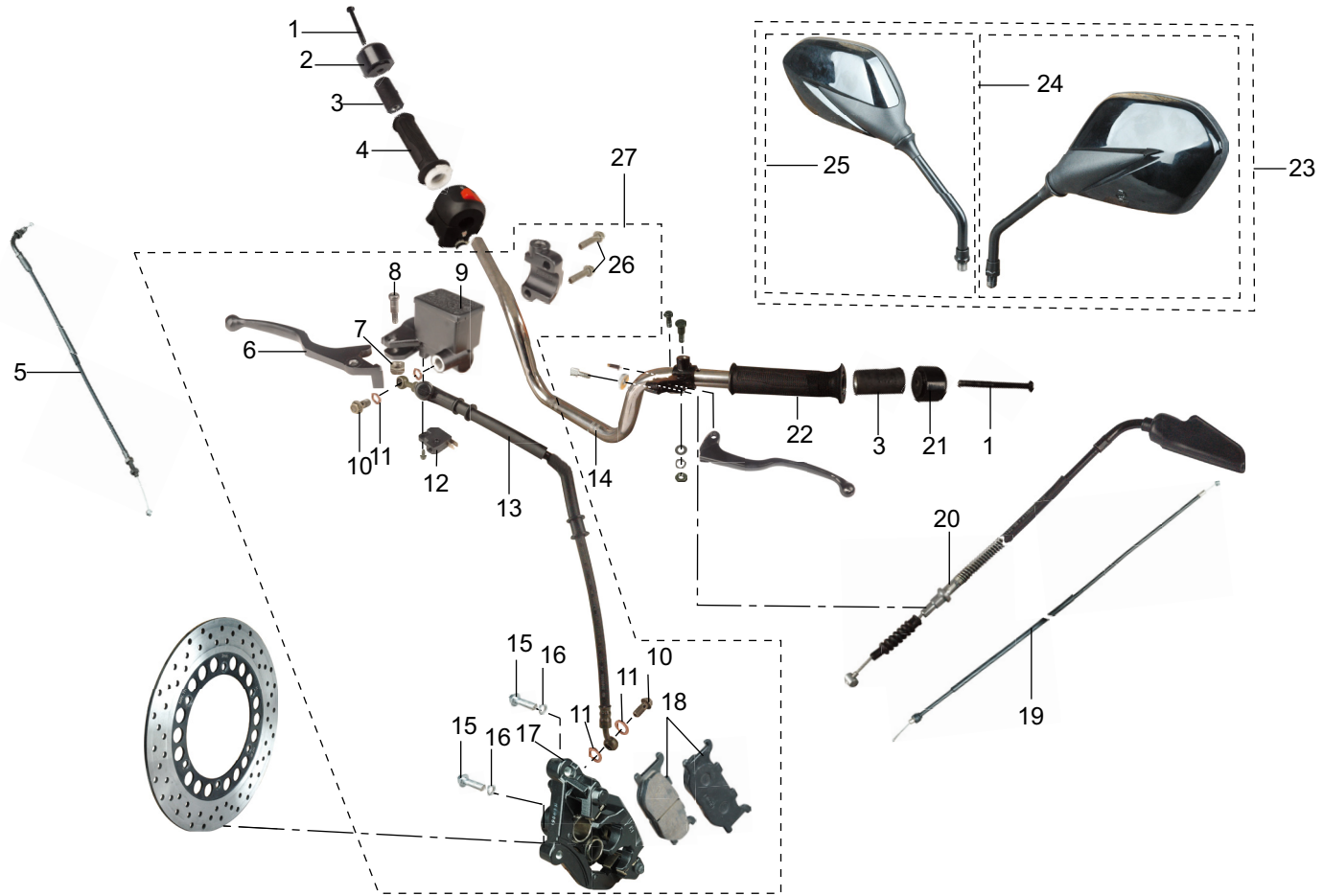
6. End cover



6. 尾罩

序号 No.	零件代号 Part code	零件名称 Part Name	数量 Amount	是否 维修 Y/N Mainte- nance	重量 Weight	属性 Property	备注 Notes
10	BGB/T845-ST4.2×13-W2	十字槽盘头自攻螺钉 Cross-slot pan head self-tapping screw	4	Y	0.0012	Meta1	

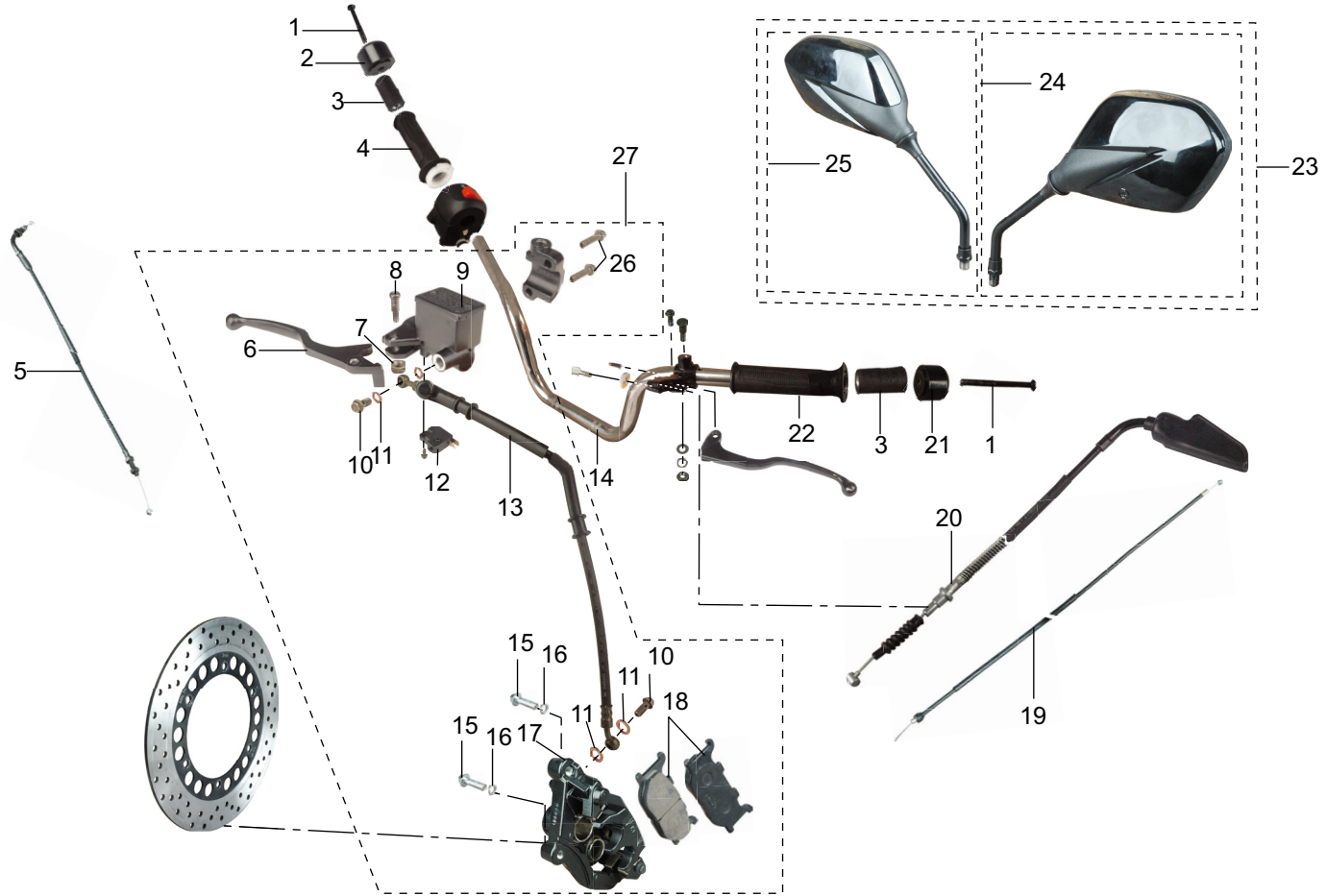
7. The direction of the manipulation of



7. 方向把操纵

序号 No.	零件代号 Part code	零件名称 Part Name	数量 Amount	是否 维修 Y/N Mainte- nance	重量 Weight	属性 Property	备注 Notes
1	BGB/T819.1-M6×70-0B	十字槽沉头螺钉 Cross slot countersunk head screw	2	Y	0.0125	Metall	
2	CA4-100001-0	右重块 Right weights	2	Y	0.0935	Metall	
3	CE4-100602-0	减震套 Damping sets	2	Y	0.0145	Rubber	
4	CF4-101000-0	右握把组合 The right combination of grip	1	Y	0.07	Rubber	
5	CF4-210000-0	油门拉索 Throttle cable	1	Y	0.1		
6	CA4-354000-0	制动手柄 Brake Handle	1	Y	0.079	Aluminium	
7	BGB/T6170-M6-37	1型六角螺母 Type 1 Hexagon nut	1	Y	0.0005	Metall	
8	CA4-351002-0	手柄连接螺栓 Handle connecting bolt	1	Y	0.009	Metall	
9	CA4-351201-0	总泵壳体 Master cylinder shell	1	Y	0.67		
10	CF4-350001-0	油管螺栓 Tubing bolt	2	Y	0.009	Metall	
11	CF4-350002-0	油管垫片 Tubing Gasket	4	Y	0.001	Metall	
12	CA5-531000-0	前制动开关 Front brake switch	2	Y	0.0065		
13	CF4-352000-0	制动管组合 Brake pipe combination	1	Y	0.018		
14	CF4-100001-0	手把管 Handle Tube	1	Y	0.84	Metall	
15	BGB/T16674.2-M10×1.25×35-36	六角法兰面细牙螺栓 Hexagon flange bolts fine tooth	2	Y	0.0325	Metall	
16	BGB/T93-10-36	标准型弹簧垫圈 Standard spring washer	2	Y	0.002	Metall	
17	JS150-36	前制动器 Front brakes	1	Y	0.71	Aluminium	
18	JS150-36-01	制动片 Brake piece	2	Y	0.11	Aluminium	
19	CF4-250000-0	阻风门拉索 Choke cable	1	Y	0.26	Metall	
20	CF4-240000-0	离合器拉索 Clutch cable	1	Y	0.24		
21	CE4-100301-0	重块 Weights	1	Y	0.0935	Metall	
22	CF4-100601-0	左握把 Left Grip	1	Y	0.077	Rubber	
23	CF4-500000-0	后视镜总成 Rear-view mirror assembly	1	Y	0.383		
24	CF4-510000-0	左后视镜组合 Left rear-view mirror combination	1	Y	0.1915		

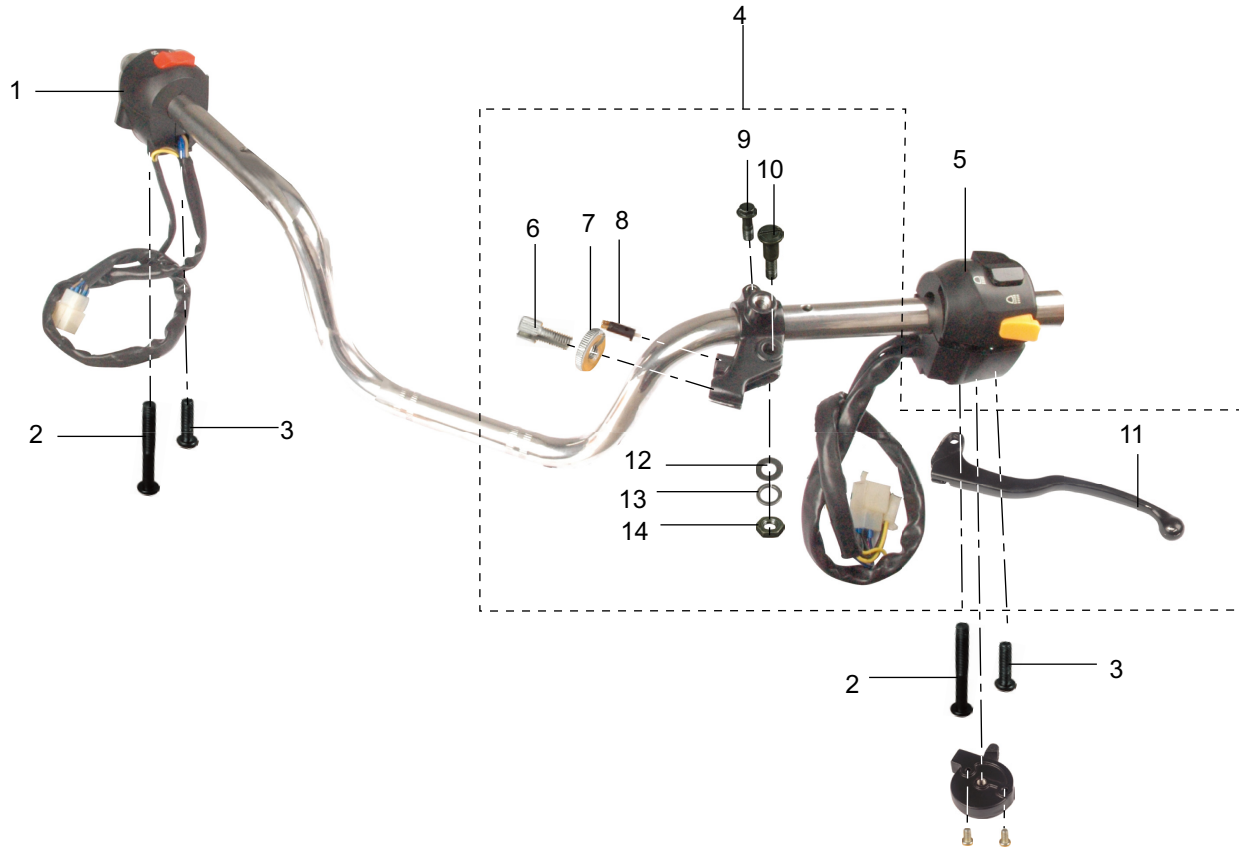
7. The direction of the manipulation of



7. 方向把操纵

序号 No.	零件代号 Part code	零件名称 Part Name	数量 Amount	是否 维修 Y/N Mainte- nance	重量 Weight	属性 Property	备注 Notes
25	CF4-520000-0	右后视镜组合 Right rear-view mirror combination	1	Y	0.1915		
26	BGB/T16674.1-M6×22-37	六角法兰面螺栓 Hexagon flange bolts	2	Y	0.007	Meta1	
27	CF4-350000-0	前制动器组合 Pre-brake combinations	1	Y	1.7795	Meta1	

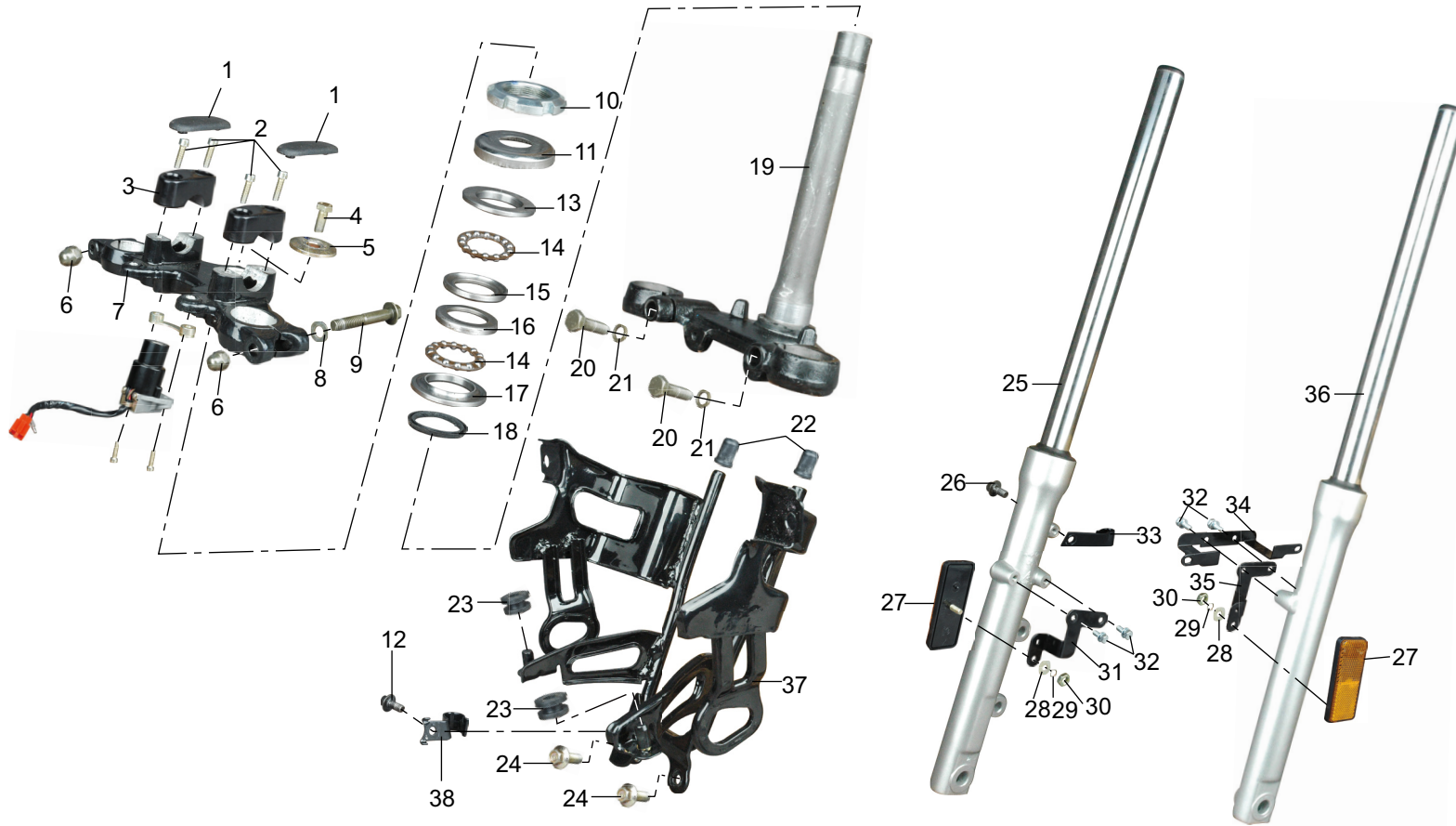
8. Handle Switch



8. 手把开关

序号 No.	零件代号 Part code	零件名称 Part Name	数量 Amount	是否 维修 Y/N Mainte- nance	重量 Weight	属性 Property	备注 Notes
1	CF5-570000-0	右手把组合开关 Right hand combination switch	1	Y	0.17	Metal	
2	BGB/T818-M5×44-0B	十字槽盘头螺钉 Cross-slot pan head screws	2	Y	0.006	Metal	
3	BGB/T818-M5×20-32	十字槽盘头螺钉 Cross-slot pan head screws	2	Y	0.17	Metal	
4	CF4-102000-0	左手柄组合 Left Handle Portfolio	1	Y	0.17	Plastic	
5	CF5-560000-0	左手把开关组合 Left the switch combination	1	Y	0.2	Plastic	
6	CA4-100401-0	拉索调整螺管 Cable adjusting screw tube	1	Y	0.0055	Metal	
7	CA4-101003-0	紧固螺母 Nut	1	Y	0.012	Metal	
8	CA4-102601-0A	离合器开关 Clutch Switch	1	Y	0.0015	Plastic	
9	BGB/T16674.1-M6×20-37	六角法兰面螺栓 Hexagon flange bolts	1	Y	0.006	Metal	
10	CF4-101001-0	开槽圆柱头轴位螺栓 Slotted cylinder head bolt axial	1	Y	0.009	Metal	
11	CA4-102201-0	左手柄 Left handle	1	Y	0.078	Aluminium	
12	BGB/T97.1-8-37	平垫圈 Flat washer	1	Y	0.0002	Metal	
13	BGB/T93-6-W7	标准型弹簧垫圈 Standard spring washer	1	Y	0.0002	Metal	
14	BGB/T6172.2-M6-37	六角锁紧薄螺母 Hexagon thin nut locking	1	Y	0.0005	Metal	

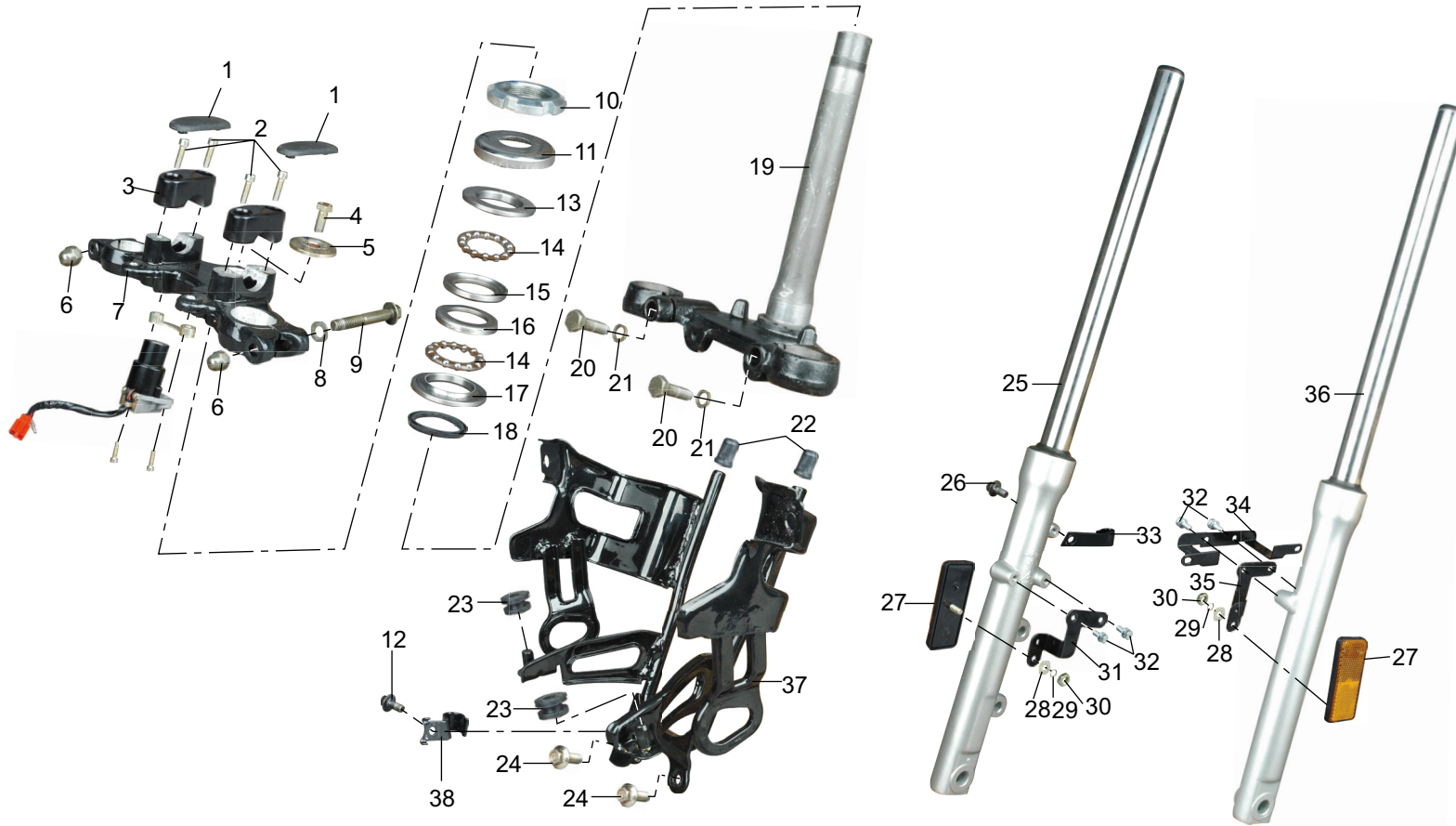
9. Fork



9. 前叉

序号 No.	零件代号 Part code	零件名称 Part Name	数量 Amount	是否 维修 Y/N Main- tenance	重量 Weight	属性 Property	备注 Notes
1	QC0-000506-2	螺栓顶盖 Bolt cap	2	Y	0.0004	Rubber	
2	BGB/T70.1-M8×30-32	内六角圆柱头螺钉 Hexagon socket head cap screws	4	Y	0.0155	Meta	
3	CF3-200202-0	手把上夹持器 Hand on the gripper	2	Y	0.0385	Meta	
4	BGB/T5781-M12×1.75×25-32	六角螺栓 Hexagon bolt	1	Y	0.022	Meta	
5	CF3-200001-0	立管垫圈 Riser Gasket	1	Y	0.0245	Meta	
6	BGB/T923-M8-27	盖形螺母 Cap-shaped nut	2	Y	0.008	Meta	
7	CF3-200201-0	手把座 Handle Block	1	Y	0.412	Meta	
8	BGB/T97.1-8-37	平垫圈 Flat washer	2	Y	0.0007	Meta	
9	BGB/T16674.1-M8×50-37	六角法兰面螺栓 Hexagon flange bolts	2	Y	0.0235	Meta	
10	CY80-00-3	方向柱调节螺母 Adjustable steering column nut	1	Y	0.0315	Meta	
11	CA3-203000-0	轴承座圈盖组合 Bearing ring seal combination	1	Y	0.014	Meta	
12	BGB/T16674.1-M6×12-37	六角法兰面螺栓 Hexagon flange bolts	1	Y	0.007	Meta	
13	CA0-000010-0	上轴承挡圈 Bearing Circlip on	1	Y	0.0385	Meta	
14	CA0-011000-0	保持架 Cage	2	Y	0.017	Meta	
15	CA0-000009-0	上轴承座圈 On the bearing ring	1	Y	0.04	Meta	
16	CA0-000007-0	下轴承座圈 Under the bearing ring	1	Y	0.04	Meta	
17	CA0-000008-0	下轴承挡圈 Next Bearing Circlip	1	Y	0.0385	Meta	
18	CF3-200601-0	转向底座防尘垫 Turned to dust pad base	1	Y	0.008	Rubber	
19	CF3-201000-0	转向底座焊接组合 Turning base welding combinations	1	Y	1.26	Meta	
20	BGB/T5781-M10×35-37	六角头螺栓 Hexagon head bolt	2	Y	0.028	Meta	
21	BGB/T93-10-B7	标准型弹簧垫圈 Standard spring washer	2	Y	0.001	Meta	
22	CA0-000609-0	前大灯胶套 Headlamp sleeve	2	Y	0.0025	Rubber	
23	CY80-02-10	护孔环 Retaining ring hole	2	Y	0.0015	Rubber	
24	BGB/T16674.1-M6×16-32	六角法兰面螺栓 Hexagon flange bolts	2	Y	0.006	Meta	

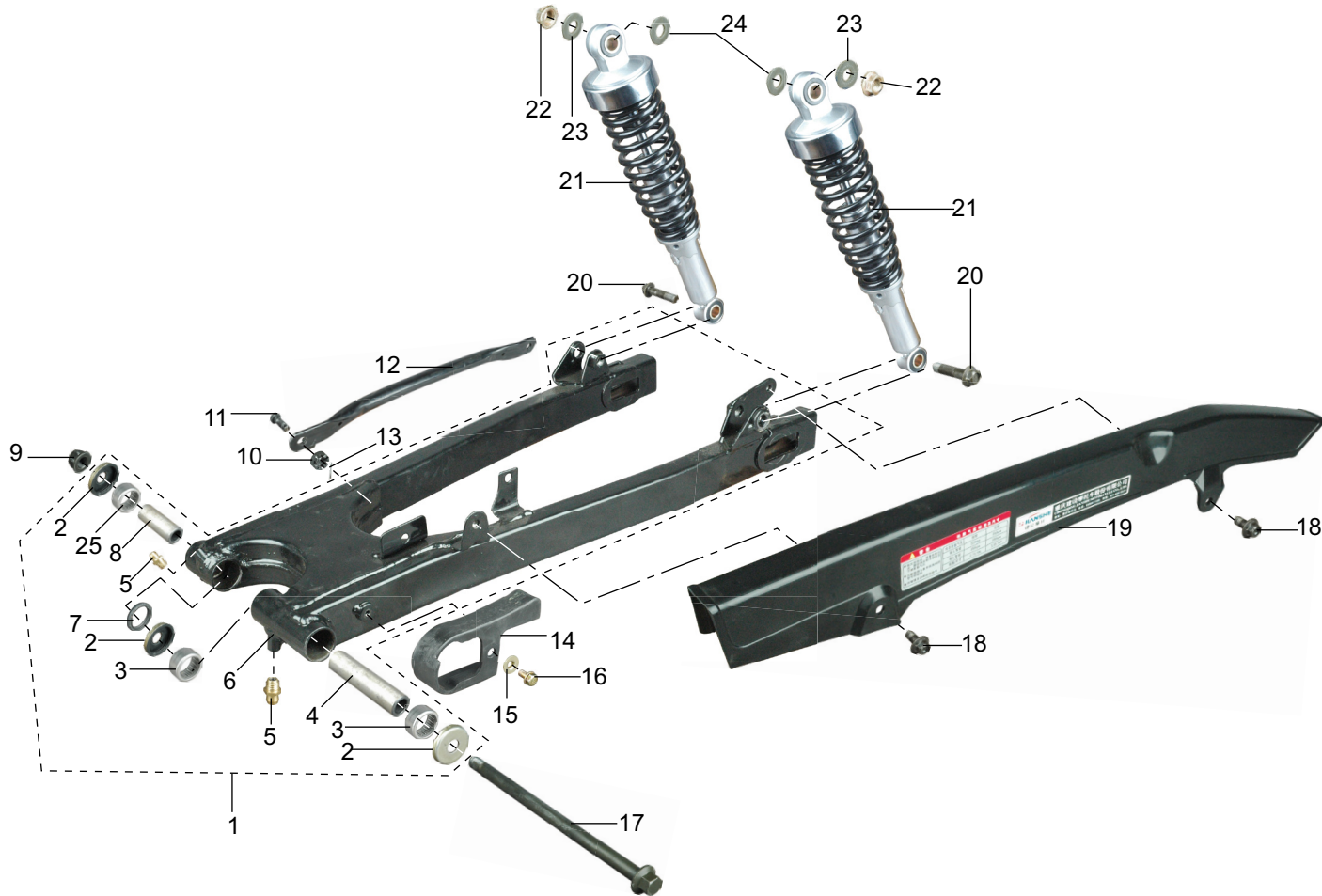
9. Fork



9. 前叉

序号 No.	零件代号 Part code	零件名称 Part Name	数量 Amount	是否 维修 Y/N Mainte- nance	重量 Weight	属性 Property	备注 Notes
25	CF3-512000-0	前右减震器	1	Y	2.55	Metal	
26	BGB/T16674.1-M6×12-37	六角法兰面螺栓	1	Y	0.005	Metal	
27	CF0-001000-0	非三角形侧回复反射器	2	Y	0.0195	Plastic	
28	BGB/T97.4-6-32	平垫圈	2	Y	0.0003	Metal	
29	BGB/T93-6-32	标准型弹簧垫圈	2	Y	0.0001	Metal	
30	BGB/T6170-6-32	I型六角螺母	2	Y	0.0005	Metal	
31	CF0-000407-0	右侧反光片支架	1	Y	0.0445	Metal	
32	BGB/T9074.1-M6×12S1S-31	螺栓和平垫圈组合件	4	Y	0.00065	Metal	
33	CF0-000405-0	制动油管支架2	1	Y	0.016	Metal	
34	CF0-000403-0	前牌照安装板	1	Y	0.0845	Metal	
35	CF0-000406-0	左侧反光片支架	1	Y	0.0445	Metal	
36	CF3-511000-0	前左减震器	1	Y	2.55	Metal	
37	CF0-007000-0	前大灯支架焊接组合	1	Y	0.81	Metal	
38	CF0-000404-0	制动油管支架1	1	Y	0.013	Metal	

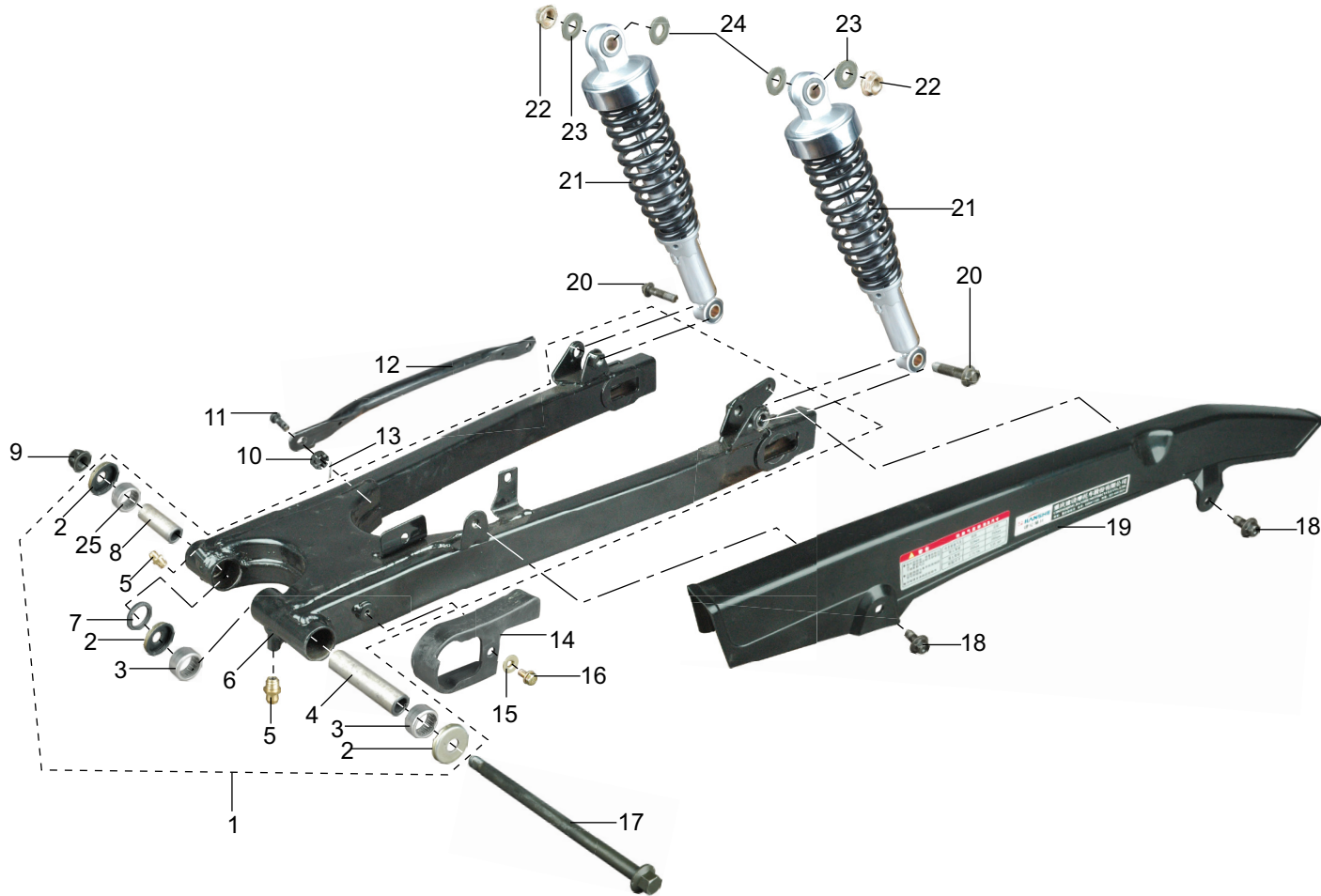
10. Rear Suspension



10. 后轮悬挂

序号 No.	零件代号 Part code	零件名称 Part Name	数量 Amount	是否 维修 Y/N Main- tenance	重量 Weight	属性 Property	备注 Notes
1	CF3-610000-0	后臂组合 After the combination arm	1	Y	2.9095	Meta1	
2	CF3-613000-0	后臂密封盖 After the arm closures	3	Y	0.009	Meta1	
3	HK1812 GB/T290-1998	冲压外圈滚针轴承 Drawn Cup Needle Roller Bearings	2	Y	0.016	Meta1	
4	CF3-610001-0	后臂轴套2 After the arm sleeve 2	1	Y	0.08	Meta1	
5	JB/T 7940.1-1995	油杯M6 Oil Cup M6	2	Y	0.002	Meta1	
6	CF3-611000-0	后臂焊接组合 After the combination arm welding	1	Y	2.61	Meta1	
7	CF3-612000-0	后臂油封 After the arm oil seal	1	Y	0.0006	Rubber	
8	CF3-610002-0	后臂轴套1 After the arm sleeve 1	1	Y	0.05	Meta1	
9	BGB/T6187.2-M12×1.25-37	螺母 Nut	1	Y	0.0195	Meta1	
10	BGB/T6172.1-M8-07	六角薄螺母 Hexagon thin nut	1	Y	0.008	Meta1	
11	CF0-000010-0	后制动器固定杆螺栓 Fixed rear brake rod bolts	1	Y	0.021	Meta1	
12	CF0-000702-0	后制动器固定杆 Fixed rear brake rod	1	Y	0.31	Meta1	
13	BGB/T91-2×18-W7	开口销 Forelock	1	Y	0.0001	Meta1	
14	JS150-00-25	链条保护套 Chain protection cover	1	Y	0.0645	Rubber	
15	JS150-00-24	链条保护套垫圈 Chain protection cover gasket	1	Y	0.002	Meta1	
16	BGB/T9074.1-M5×10S2L-32	螺栓和平垫圈组合 Bolt with washer	1	Y	0.003	Meta1	
17	CF0-000016-0	后臂轴 After the arm-axis	1	Y	0.209	Meta1	
18	BGB/T16674.1-M6×12-37	六角法兰面螺栓 Hexagon flange bolts	2	Y	0.0065	Meta1	
19	CF0-000504-0	链盒 Chain Box	1	Y	0.17	Plastic	
20	BGB/T16674.2-M10×1.25×40-37	六角法兰面细牙螺栓 Hexagon flange bolts fine tooth	2	Y	0.033	Meta1	
21	CF3-520000-0	后减震器 Rear shock absorber	2	Y	1.36	Meta1	
22	BGB/T6177.2-M10×1.25-32	六角法兰面细牙螺母 Hexagon flange nut fine tooth	2	Y	0.0075	Meta1	
23	CF0-000402-0	减震平垫圈2 Damping flat washer 2	2	Y	0.0065	Meta1	
24	CF0-000401-0	减震平垫圈1 Damping flat washers 1	2	Y	0.007	Meta1	

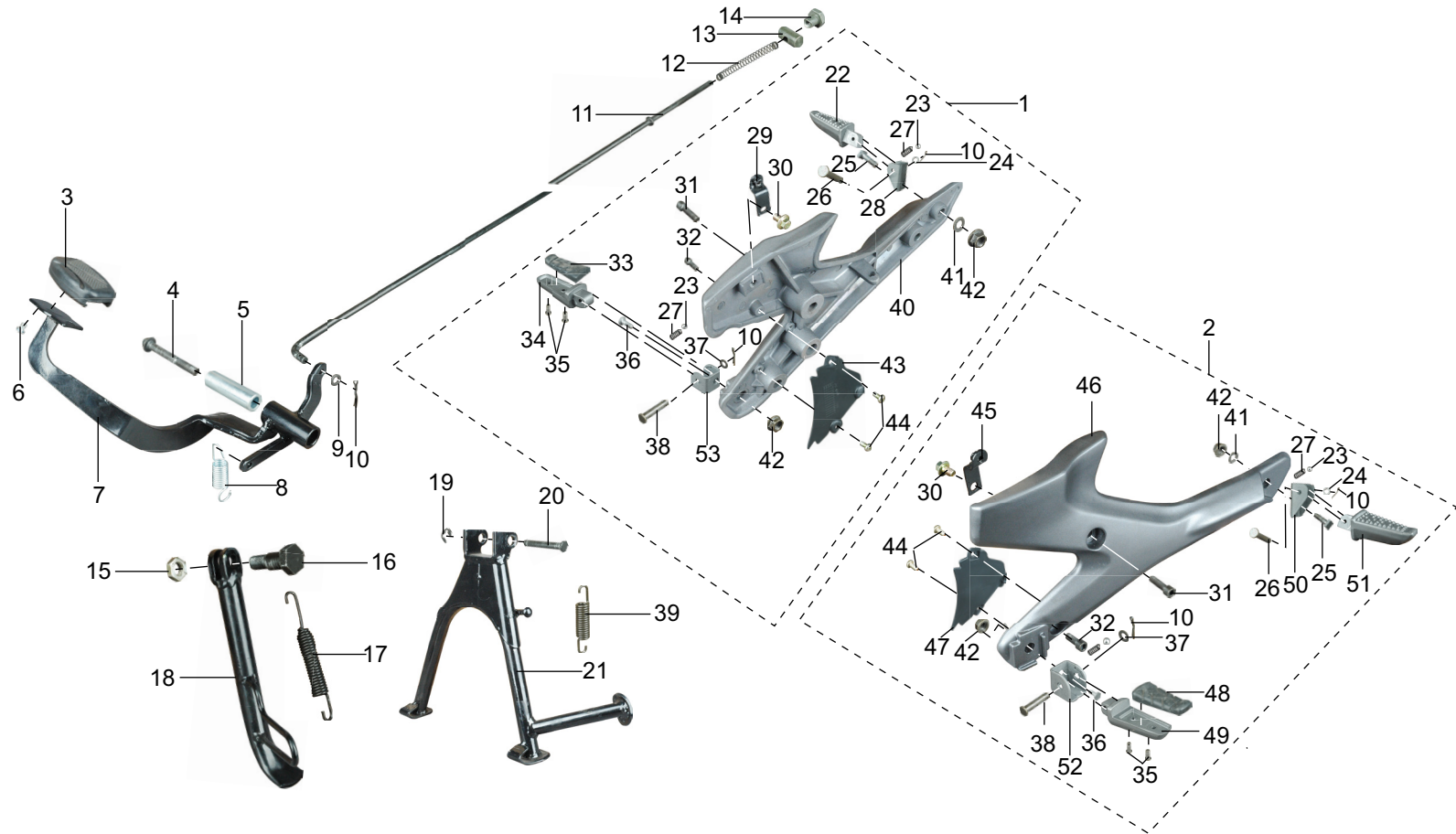
10. Rear Suspension



10. 后轮悬挂

序号 No.	零件代号 Part code	零件名称 Part Name	数量 Amount	是否 维修 Y/N Mainte- nance	重量 Weight	属性 Property	备注 Notes
25	HK1816 GB/T290-1998	冲压外圈滚针轴承 Drawn Cup Needle Roller Bearings	1	Y	0.016	Metal	

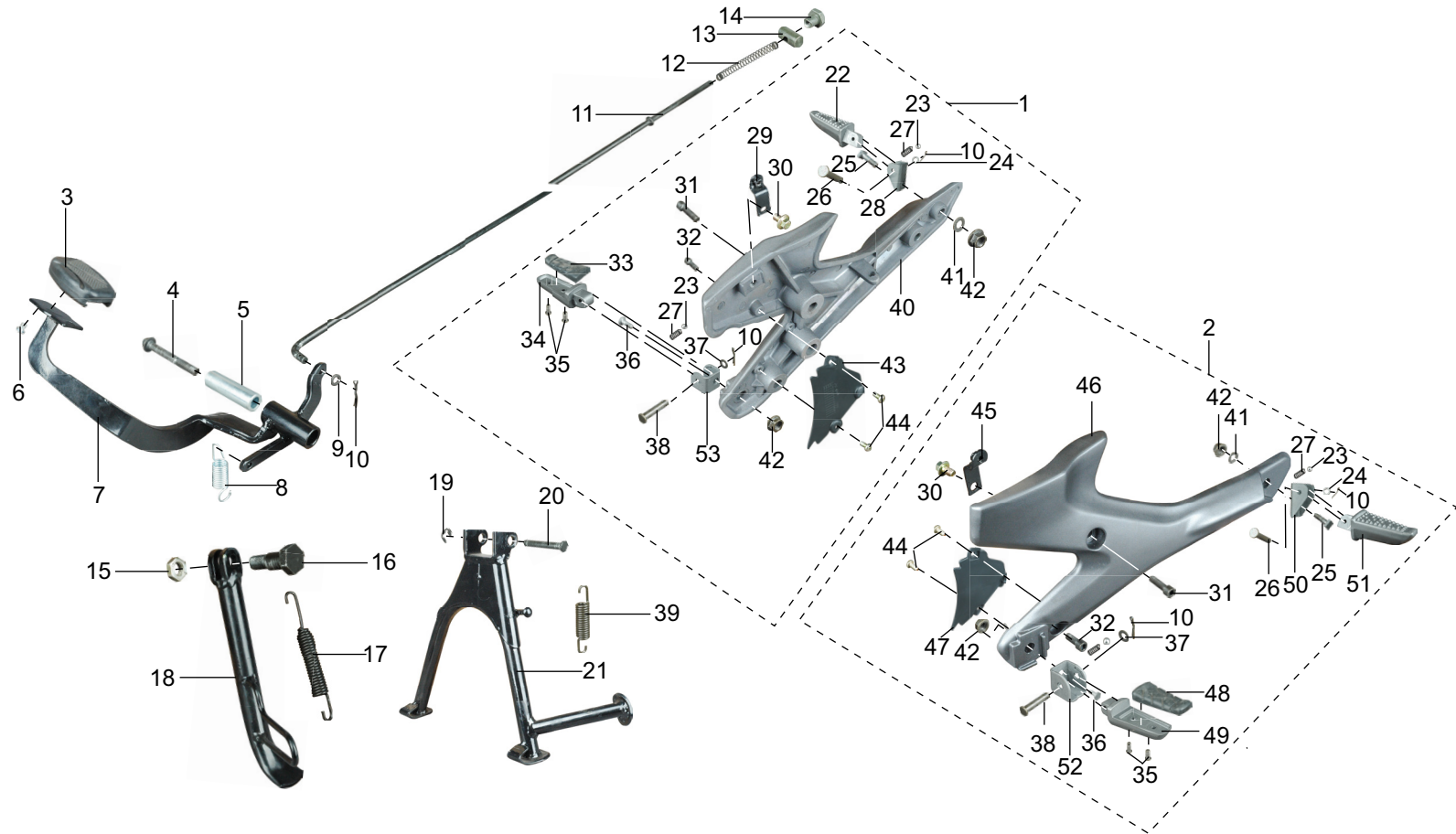
11. Main stand



11. 主支架

序号 No.	零件代号 Part code	零件名称 Part Name	数量 Amount	是否 维修 Y/N Main- tenance	重量 Weight	属性 Property	备注 Notes
1	CF3-670000-0	右搁脚组合 Combination of the right footrest	1	Y	1.698		
2	CF3-660000-0	左搁脚组合 Combination of the left footrest	1	Y	1.698		
3	CE0-015601-0	踏板胶皮 Pedal rubber	1	Y	0.0345	Rubber	
4	BGB/T16674.1-M10×80-37	六角法兰面螺栓 Hexagon flange bolts	1	Y	0.0575	Meta1	
5	CE0-000013-0	后制动踏板衬套 Rear brake pedal bush	1	Y	0.049	Meta1	
6	BGB/T819-M4×8-01	十字槽沉头螺钉 Cross slot countersunk head screw	1	Y	0.0002	Meta1	
7	CF0-021000-0	制动踏板焊接组合 Brake pedal welded combinations	1	Y	0.64	Meta1	
8	CF0-000008-0	制动踏板复位簧 Reset brake pedal spring	1	Y	0.018	Meta1	
9	BGB/T97.1-6-37	平垫圈 Flat washer	1	Y	0.0002	Meta1	
10	BGB/T91-2×18-W7	开口销 Forelock	1	Y	0.0001	Meta1	
11	CF0-000007-0	后制动拉杆 Rear brake rod	1	Y	0.0885	Meta1	
12	CF0-000011-0	制动连杆压簧 Compression Spring Brake Linkage	1	Y	0.004	Meta1	
13	CF0-000012-0	制动杆销 Brake rod pin	1	Y	0.017	Meta1	
14	CF0-000013-0	制动连杆螺母 Brake rod nut	1	Y	0.011	Meta1	
15	BGB/T6173-M10×1.25-02	六角细牙薄螺母 Hexagon thin nut fine tooth	1	Y	0.0055	Meta1	
16	CF0-000018-0	侧支架螺栓 Side stand bolt	1	Y	0.034	Meta1	
17	CF0-000704-0	侧支架拉簧 Side stand tension spring	1	Y	0.0565	Meta1	
18	CF3-640000-0	侧支架组合 Side bracket combination	1	Y	0.444	Meta1	
19	BGB/T896-9-B7	开口挡圈 Open Collar	1	Y	0.0001	Meta1	
20	CF0-000017-0	主支架轴 Mast axis	1	Y	0.0825	Meta1	
21	CF3-630000-0	主支架组合 Combination of the main bracket	1	Y	1.39	Meta1	
22	CF3-671201-0	后搁脚体(右) After the footrest body (right)	1	Y	0.168	Meta1	
23	BGB/T308-15/64"	钢球 Ball	4	Y	0.0015	Meta1	
24	BGB/T97.1-8-37	平垫圈 Flat washer	2	Y	0.0005	Meta1	

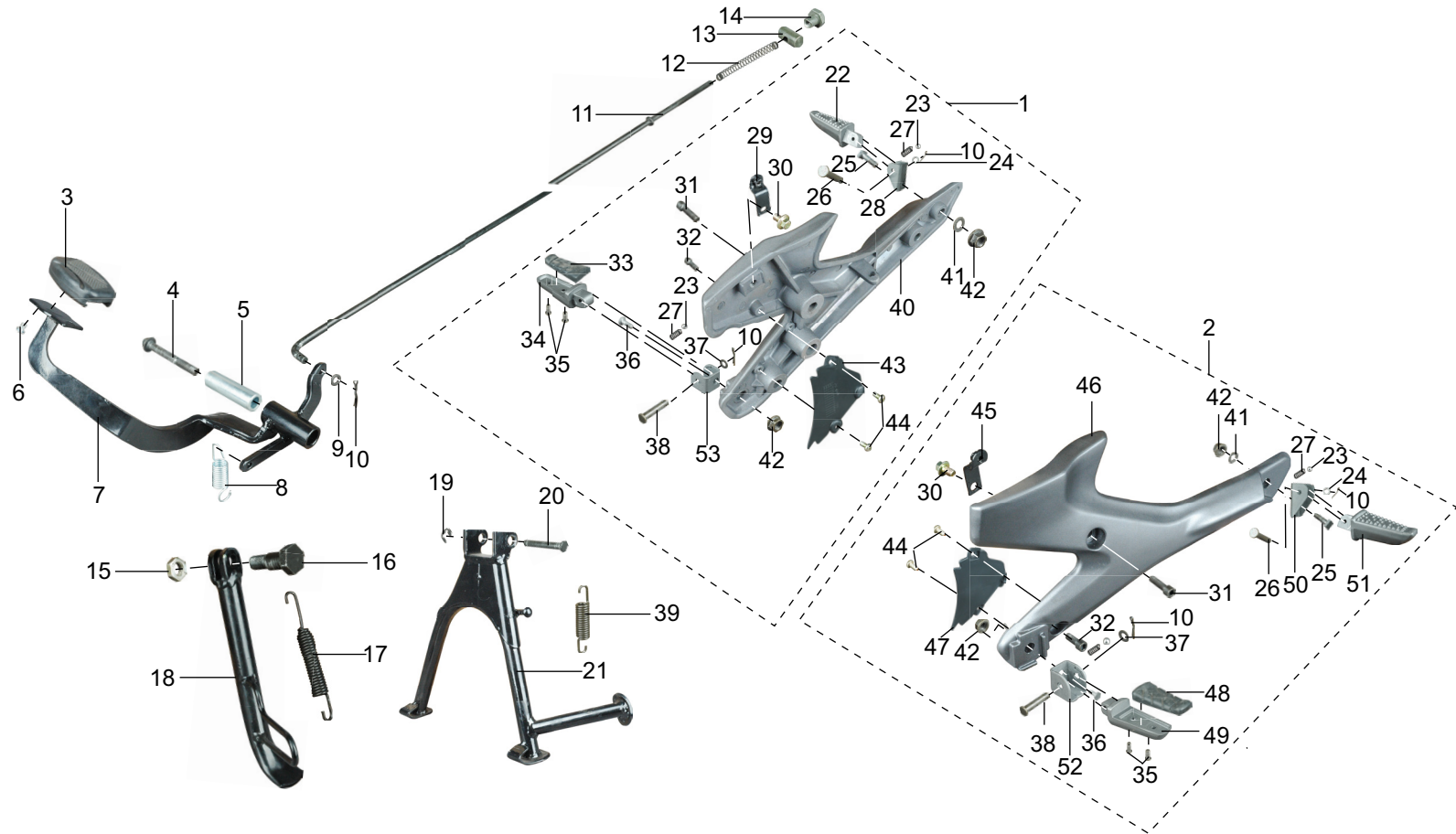
11. Main stand



11. 主支架

序号 No.	零件代号 Part code	零件名称 Part Name	数量 Amount	是否 维修 Y/N Main- tenance	重量 Weight	属性 Property	备注 Notes
25	CF3-671001-0	销轴	Pin	2	Y	0.0305	Metal
26	CF3-663001-0	后搁脚支承螺栓	After the footrest supporting bolt	2	Y	0.008	Metal
27	JS150-00-154	压簧	Compression	4	Y	0.0015	Metal
28	CF3-674401-0	后搁脚支承板(右)	After the footrest supporting plate (right)	1	Y	0.0645	Metal
29	CF3-673000-0	右侧盖支承板组合	The right combination of cover bearing plate	1	Y	0.0195	Metal
30	BGB/T9074.1-M6×12-S1S-32	螺栓和平垫圈组合件	Bolt with washer	2	Y	0.011	Metal
31	BGB/T70.1-M10×1.25×35-37	内六角圆柱头螺钉	Hexagon socket head cap screws	2	Y	0.028	Metal
32	BGB/T70.1-M10×1.25×25-37	内六角圆柱头螺钉	Hexagon socket head cap screws	2	Y	0.023	Metal
33	CF3-676601-0	前搁脚橡胶体(右)	Former footrest rubber body (right)	1	Y	0.0755	Rubber
34	CF3-672201-0	前搁脚体(右)	Former footrest body (right)	1	Y	0.164	Metal
35	BGB/T818-M6×20-07	十字槽盘头螺钉	Cross-slot pan head screws	4	Y	0.004	Metal
36	JS150-00-26	搁脚轴销	Footrest shaft pin	1	Y	0.0265	Metal
37	BGB/T97.1-6-37	平垫圈	Flat washer	1	Y	0.001	Metal
38	CF3-664001-0	前搁脚支承螺栓	Former footrest supporting bolt	2	Y	0.0145	Metal
39	CF0-000703-0	主支架拉簧	The main tension spring bracket	1	Y	0.695	Metal
40	CF3-670201-0	右搁脚支承体	The right footrest supporting body	1	Y	0.98	Aluminium
41	BGB/T97.1-10-37	平垫圈	Flat washer	2	Y	0.0025	Metal
42	BGB/T6177.1-M10-37	六角法兰面螺母	Hexagon flange nut	4	Y	0.008	Metal
43	CF3-670501-0	右搁脚装饰板	Right footrest decorative plate	1	Y	0.014	Rubber
44	BGB/T818-M5×10-02	十字槽盘头螺钉	Cross-slot pan head screws	4	Y	0.002	Metal
45	CF3-663000-0	左侧盖支承板组合	Combination of the left bearing plate cover	1	Y	0.0195	Metal
46	CF3-660201-0	左搁脚支承体	Left footrest supporting body	1	Y	0.98	Aluminium
47	CF3-660501-0	左搁脚装饰板	Left footrest decorative plate	1	Y	0.014	Rubber
48	CF3-665601-0	前搁脚橡胶体(左)	Former footrest rubber body (left)	1	Y	0.0755	Rubber
49	CF3-662201-0	前搁脚体(左)	Former footrest body (left)	1	Y	0.164	Metal

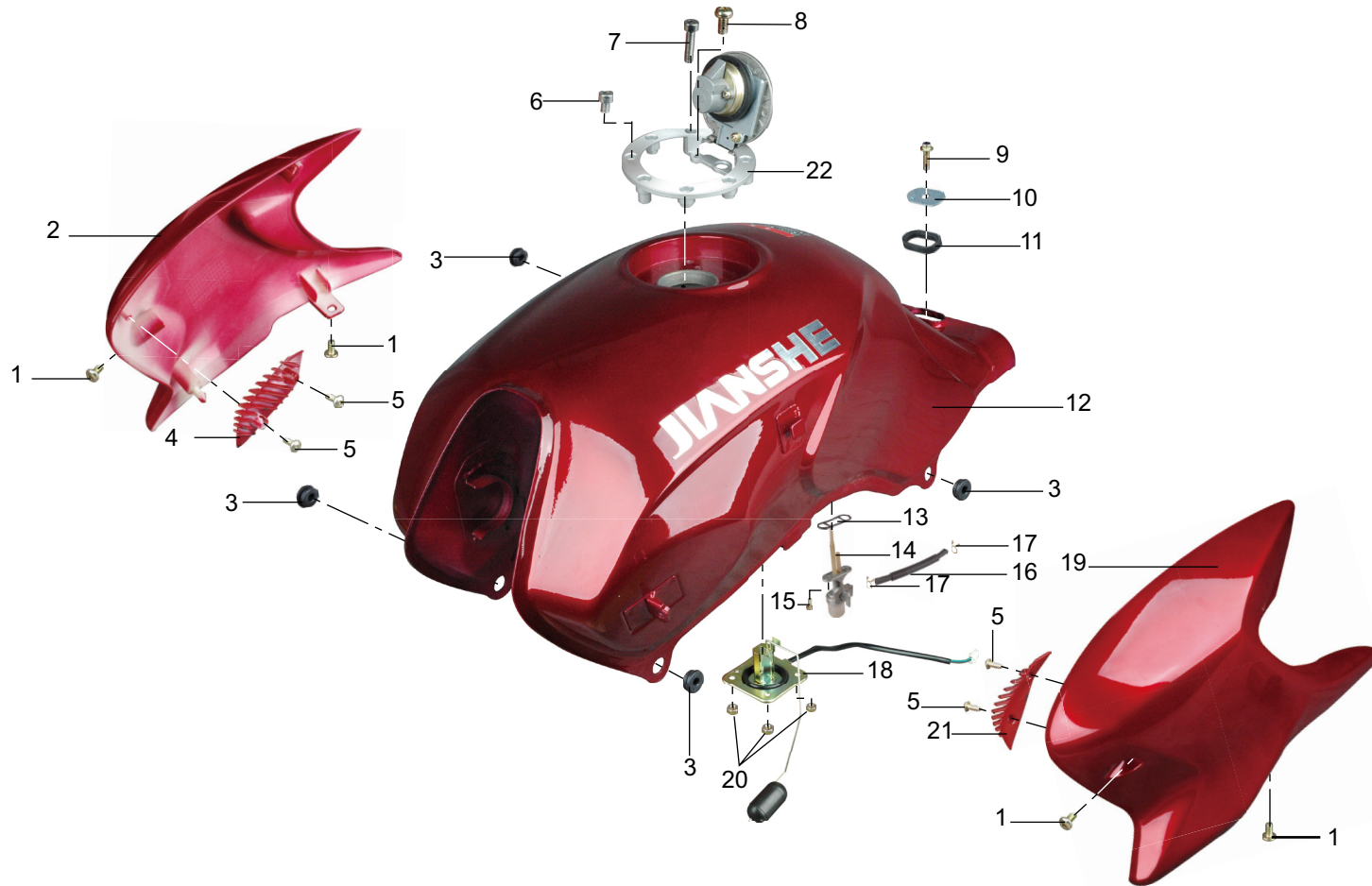
11. Main stand



11. 主支架

序号 No.	零件代号 Part code	零件名称 Part Name		数量 Amount	是否 维修 Y/N Mainte- nance	重量 Weight	属性 Property	备注 Notes	
50	CF3-663401-0	后搁脚支承板(左)	After the footrest supporting plate (left)	1	Y	0.0645	Metal		
51	CF3-661201-0	后搁脚体(左)	After the footrest body (left)	1	Y	0.168	Metal		
52	CF3-664401-0	前搁脚支承板(左)	Former footrest supporting plate (left)	1	Y	0.067	Metal		
53	CF3-675401-0	前搁脚支承板(右)	Bearing plate before the footrest (right)	1	Y	0.067	Metal		

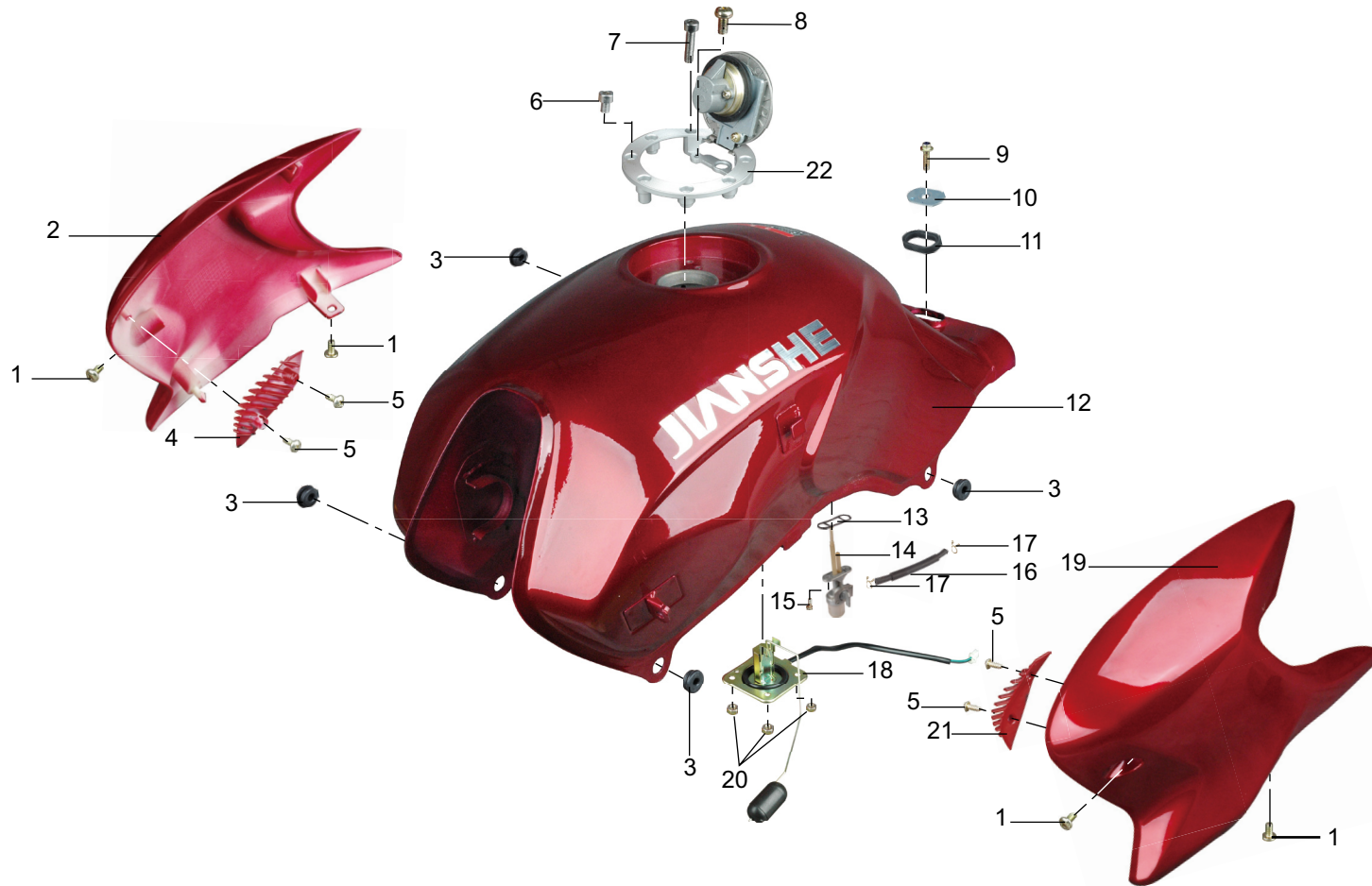
12. Tank



12. 油箱

序号 No.	零件代号 Part code	零件名称 Part Name	数量 Amount	是否 维修 Y/N Mainte- nance	重量 Weight	属性 Property	备注 Notes	
1	BGB/T818-M6×12-02	十字槽盘头螺钉	4	Y	0.0055	Metal		
2	CF0-000506-0-0T0A38	油箱右装饰罩	1	Y	0.1895	Plastic	红色	Red
	CF0-000506-0-0T0A22	油箱右装饰罩	1	Y	0.1895	Plastic	透明红	Transparent Red
	CF0-000506-0-0T0B07	油箱右装饰罩	1	Y	0.1895	Plastic	黑色	Black
	CF0-000506-0-0T0E37	油箱右装饰罩	1	Y	0.1895	Plastic	蓝色	Blue
	CF0-000506-0-0T0H33	油箱右装饰罩	1	Y	0.1895	Plastic	灰色	Gray
	CF0-000506-0-0T0C12	油箱右装饰罩	1	Y	0.1895	Plastic	珠光金黄	Golden Pearl
3	CF0-000602-0	胶垫1	4	Y	0.002	Rubber		
4	CF0-000513-0-0T0A38	右装饰罩内盖	1	Y	0.0115	Plastic	红色	Red
	CF0-000513-0-0T0A22	右装饰罩内盖	1	Y	0.0115	Plastic	透明红	Transparent Red
	CF0-000513-0-0T0B07	右装饰罩内盖	1	Y	0.0115	Plastic	黑色	Black
	CF0-000513-0-0T0E37	右装饰罩内盖	1	Y	0.0115	Plastic	蓝色	Blue
	CF0-000513-0-0T0H33	右装饰罩内盖	1	Y	0.0115	Plastic	灰色	Gray
	CF0-000513-0-0T0C12	右装饰罩内盖	1	Y	0.0115	Plastic	珠光金黄	Golden Pearl
5	BGB/T845-ST3.5×10-W2	自攻螺钉	4	Y	0.001	Metal		
6	BGB/T70.1-M5×8-90	内六角圆柱头螺栓	4	Y	0.003	Metal		
7	BGB/T70.1-M5×25-90	内六角圆柱头螺栓	3	Y	0.0035	Metal		
8	BGB/T823-M5×10-02	十字槽小盘头螺钉	1	Y	0.003	Metal		
9	BGB/T16674.1-M8×30-32	六角法兰面螺栓	1	Y	0.016	Metal		
10	CA0-000401-0	油箱安装垫圈	1	Y	0.0125	Metal		
11	CA0-000605-0	油箱定位防震垫2	1	Y	0.005	Rubber		
12	CF3-311000-0-0T0A38	油箱体	1	Y	3.95	Plastic	红色	Red
	CF3-311000-0-0T0A22	油箱体	1	Y	3.95	Plastic	透明红	Transparent Red
	CF3-311000-0-0T0B07	油箱体	1	Y	3.95	Plastic	黑色	Black

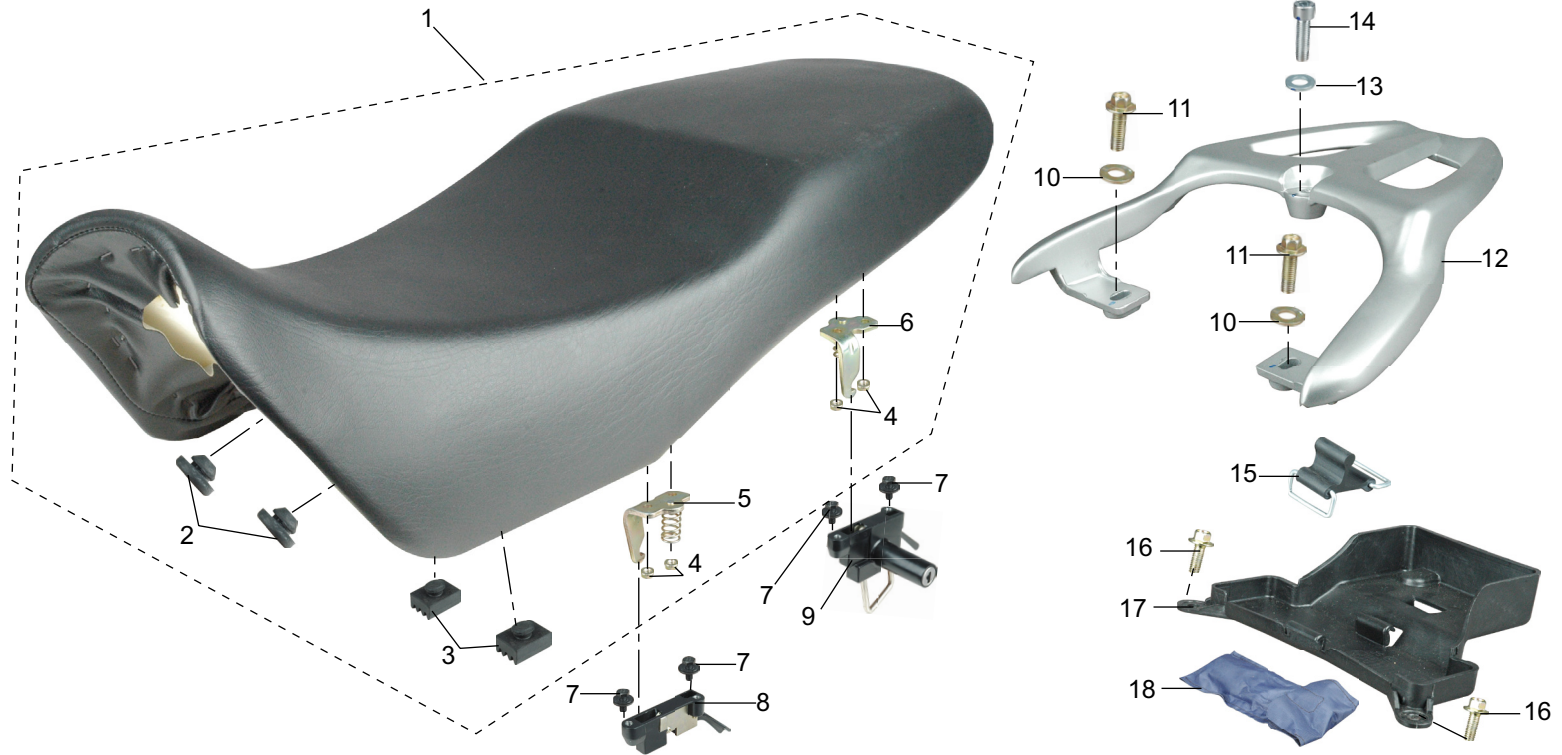
12. Tank



12. 油箱

序号 No.	零件代号 Part code	零件名称 Part Name	数量 Amount	是否 维修 Y/N Maine- nance	重量 Weight	属性 Property	备注 Notes	
	CF3-311000-0-0T0E37	油箱体	Fuel tank body	1	Y	3.95	Plastic 蓝色	Blue
	CF3-311000-0-0T0H33	油箱体	Fuel tank body	1	Y	3.95	Plastic 灰色	Gray
	CF3-311000-0-0T0C12	油箱体	Fuel tank body	1	Y	3.95	Plastic 珠光金黄	Golden Pearl
13	CA3-312401-0	波形垫圈	Wave washer	1	Y	0.0002	Rubber	
14	CF3-312000-0	燃油开关组合	Fuel switch combination	1	Y	0.153	Aluminium	
15	BGB/T9074.1-M6×20S3N-02	螺钉垫圈组合	Screw washer combination	2	Y	0.006	Metal	
16	CF0-000604-0	油管	Tubing	1	Y	0.017	Rubber	
17	CF0-000701-0	油管卡环	Tubing clasp	2	Y	0.0005	Metal	
18	CF5-740000-0	燃油信号发送器	Fuel signal transmitter	1	Y	0.113	Metal	
19	CF0-000505-0-0T0A38	油箱左装饰罩	Tank left Decorative Cover	1	Y	0.1895	Plastic 红色	Red
	CF0-000505-0-0T0A22	油箱左装饰罩	Tank left Decorative Cover	1	Y	0.1895	Plastic 透明红	Transparent Red
	CF0-000505-0-0T0B07	油箱左装饰罩	Tank left Decorative Cover	1	Y	0.1895	Plastic 黑色	Black
	CF0-000505-0-0T0E37	油箱左装饰罩	Tank left Decorative Cover	1	Y	0.1895	Plastic 蓝色	Blue
	CF0-000505-0-0T0H33	油箱左装饰罩	Tank left Decorative Cover	1	Y	0.1895	Plastic 灰色	Gray
	CF0-000505-0-0T0C12	油箱左装饰罩	Tank left Decorative Cover	1	Y	0.1895	Plastic 珠光金黄	Golden Pearl
20	BGB/T6170-M6-32	1型六角螺母	Type 1 Hexagon nut	4	Y	0.002	Metal	
21	CF0-000512-0-0T0A38	油箱左装饰罩内盖	Decorative hood left fuel tank cover	1	Y	0.0115	Plastic 红色	Red
	CF0-000512-0-0T0A22	油箱左装饰罩内盖	Decorative hood left fuel tank cover	1	Y	0.0115	Plastic 透明红	Transparent Red
	CF0-000512-0-0T0B07	油箱左装饰罩内盖	Decorative hood left fuel tank cover	1	Y	0.0115	Plastic 黑色	Black
	CF0-000512-0-0T0E37	油箱左装饰罩内盖	Decorative hood left fuel tank cover	1	Y	0.0115	Plastic 蓝色	Blue
	CF0-000512-0-0T0H33	油箱左装饰罩内盖	Decorative hood left fuel tank cover	1	Y	0.0115	Plastic 灰色	Gray
	CF0-000512-0-0T0C12	油箱左装饰罩内盖	Decorative hood left fuel tank cover	1	Y	0.0115	Plastic 珠光金黄	Golden Pearl
22	CE4-420000-0	油箱锁	Fuel tank lock	1	Y	0.3105	Metal	

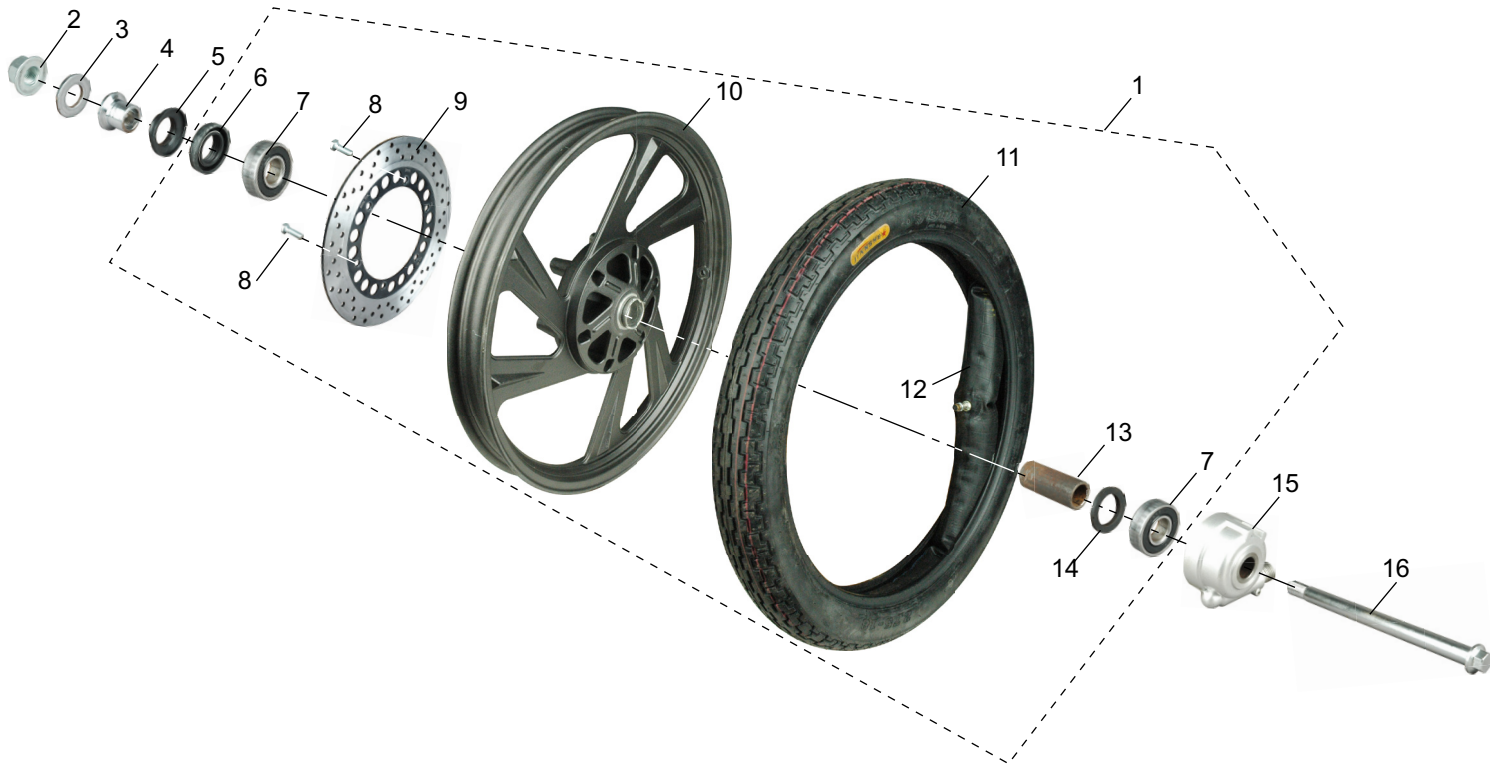
13. Cushion



13. 座垫

序号 No.	零件代号 Part code	零件名称 Part Name	数量 Amount	是否 维修 Y/N Mainte- nance	重量 Weight	属性 Property	备注 Notes
1	CF3-400000-0	双人座垫总成	Double seat assembly	1	Y	1.6665	
2	CF3-400602-0	座垫缓冲垫	Seat cushion	2	Y	0.0025	Rubber
3	CF3-400601-0	座垫减震垫	Cushion Shock pad	2	Y	0.0075	Rubber
4	BGB/T6177.1-M6-32	六角法兰面螺母	Hexagon flange nut	4	Y	0.0035	MetaI
5	CF3-404000-0	支承组合2	Supporting Portfolio 2	1	Y	0.013	MetaI
6	CF3-403000-0	支承组合1	Combination of a supporting	1	Y	0.013	MetaI
7	BGB/T9074.1-M6×16S2N-32	螺栓和平垫圈组合件	Bolt with washer	4	Y	0.0075	MetaI
8	CF4-442000-0	右座垫锁组合	Lock the right combination of cushion	1	Y	0.114	MetaI
9	CF4-441000-0	左座垫锁组合	Combination of left-seat-lock	1	Y	0.253	MetaI
10	BGB/T848-8-32	小垫圈	Small washer	2	Y	0.0016	MetaI
11	BGB/T16674.1-M8×25-32	法兰面六角螺栓	Hexagon flange bolts	2	Y	0.0145	MetaI
12	CF0-000201-0	后货架	After the shelf	1	Y	1.07	Aluminium
13	BGB/T848-10-31	小垫圈	Small washer	1	Y	0.002	MetaI
14	BGB/T70.1-M10×35-36	内六角圆柱头螺钉	Hexagon socket head cap screws	1	Y	0.027	MetaI
15	CF0-011000-0	工具箍带	Tool belt hoop	1	Y	0.004	Rubber
16	BGB/T16674.1-M6×16-32	六角法兰面螺栓	Hexagon flange bolts	2	Y	0.006	MetaI
17	CF0-000509-0	工具箱	Tool Box	1	Y	0.0655	Plastic
18	CA9-001000-0	随车工具	Truck Tools	1	Y	0.0965	

14. Front



14. 前轮

序号 No.	零件代号 Part code	零件名称 Part Name	数量 Amount	是否 维修 Y/N Mainte- nance	重量 Weight	属性 Property	备注 Notes
1	CF3-810000-0	前轮 Front	1	Y	8.346		
2	BGB/T6187.2-M14×1.5-36	螺母 Nut	1	Y	0.032	Meta1	
3	BGB/T97.1-14-36	平垫圈 Flat washer	1	Y	0.0085	Meta1	
4	CF0-000019-0	前轮衬套 Front Bushing	1	Y	0.03	Meta1	
5	CY80-00-45	轮毂防尘盖 Wheel Shield	1	Y	0.005	Meta1	
6	JS150-20-01	油封 SEAL	1	Y	0.009	Rubber	
7	BGB/T276-1994	滚动轴承 6202-2RS Bearing 6202-2RS	2	Y	0.0425	Meta1	
8	JS150-20-3	螺栓 Bo1t	6	Y	0.0135	Meta1	
9	JS150-20-4	制动盘 Brake Disc	1	Y	1.03	Meta1	
10	CF3-810201-0	前轮毂 Front Hub	1	Y	4.08	Aluminium	
11	BGB/T2983-2.75-18P-FA6	前轮外胎2.75-18 Front wheel tire 2.75-18	1	Y	1.92	Rubber	
12	BGB/T7036.2-2.75-18P-000	前轮内胎2.75-18 Front Inner Tube 2.75-18	1	Y	0.9	Rubber	
13	CF3-810001-0	轮毂衬套 Wheel Bushing	1	Y	0.053	Meta1	
14	CF3-810401-0	支承圈 Support ring	1	Y	0.002	Rubber	
15	JS150-25	前轮速度计 Front wheel speedometer	1	Y	0.178		
16	CF0-000002-0	前轮轴 Previous Axle	1	Y	0.3	Meta1	

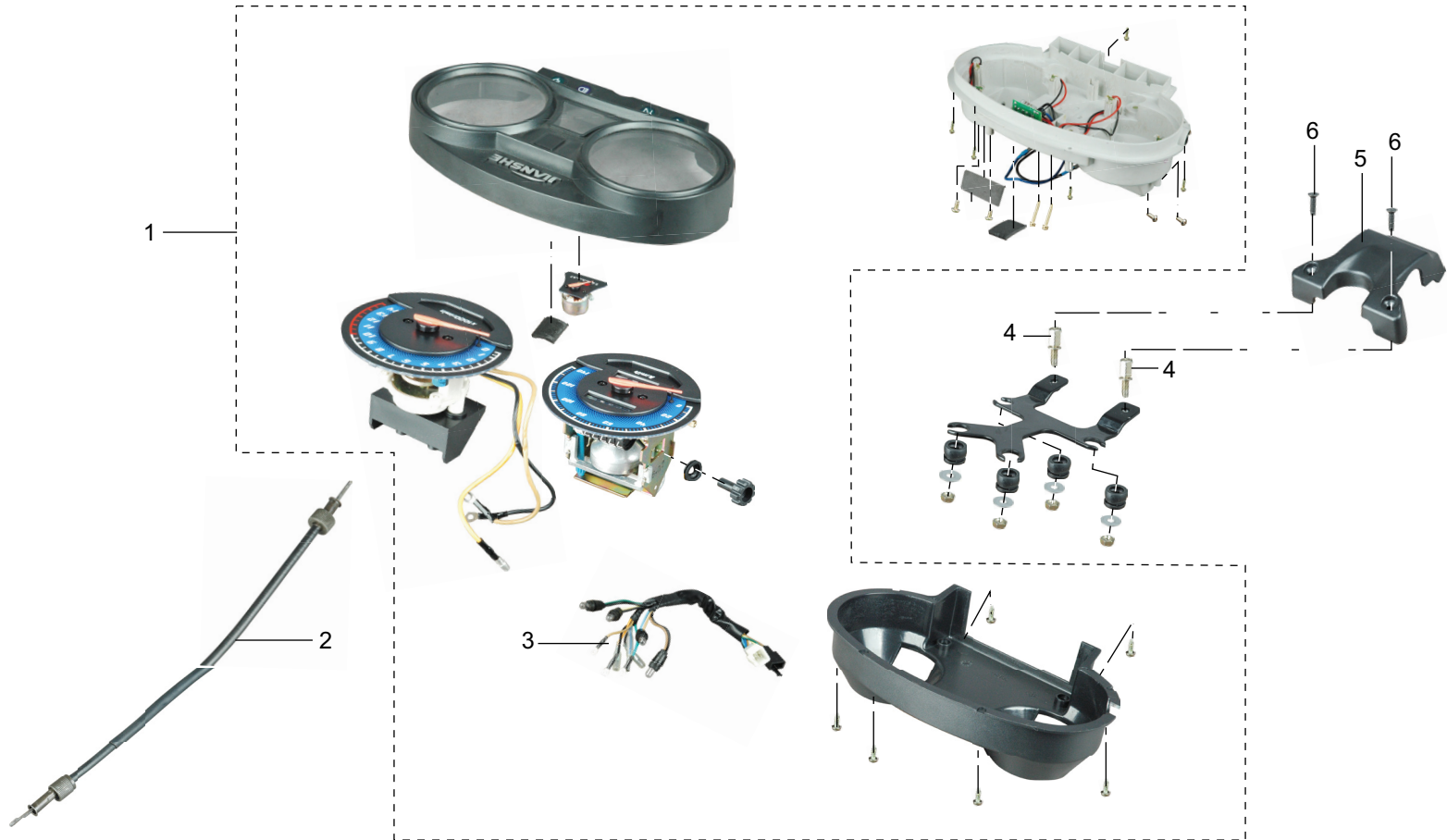
15. 后轮

序号 No.	零件代号 Part code	零件名称 Part Name	数量 Amount	是否 维修 Y/N Mainte- nance	重量 Weight	属性 Property	备注 Notes
1	BGB/T6187.2-M14×1.5-37	螺母 Nut	1	Y	0.0305	Meta1	
2	CF0-016000-0	右链调节器 Right-chain regulator	1	Y	0.1565	Meta1	
3	CF0-016401-0	张紧板2 Tension Plate 2	1	Y	0.1045	Meta1	
4	CF0-015401-0	后盖 Back Cover	2	Y	0.042	Meta1	
5	BGB/T6170-M8-37	1型六角螺母 Type 1 Hexagon nut	4	Y	0.005	Meta1	
6	CF0-000005-0	后轮右衬套 The right rear wheel hub	1	Y	0.1035	Meta1	
7	BGB/T91-2×18-W7	开口销 Forelock	1	Y	0.0001	Meta1	
8	BGB/T6172.1-M8-07	六角薄螺母 Hexagon thin nut	1	Y	0.003	Meta1	
9	BGB/T97.1-8-37	平垫圈 Flat washer	1	Y	0.0008	Meta1	
10	CF0-000020-0	螺栓 BoIt	1	Y	0.016	Meta1	
11	CF4-320000-0	后制动器 Rear brake	1	Y	0.2071		
12	CA4-310701-0	拉簧1 Tension spring 1	1	Y	0.003	Meta1	
13	CF4-321000-0	后制动盖 Rear brake cover	1	Y	0.58	Aluminium	
14	CA4-312000-0	左蹄块组合 Left Shoe Combination	1	Y	0.201		
15	CA4-310702-0	拉簧2 Tension spring 2	1	Y	0.003	Meta1	
16	CA4-314000-0	右蹄块组合 Combination of the right Shoe	1	Y	0.201		
17	CA4-310001-0	凸轮轴 Camshaft	1	Y	0.0695	Meta1	
18	CA4-320701-0	密封垫 Gasket	1	Y	0.0001		
19	CA4-310401-0	指示片 Instruction sheet	1	Y	0.0005	Meta1	
20	BGB/T5782-M6×35-37	六角头螺栓 Hexagon head boIt	1	Y	0.0095	Meta1	
21	BGB/T6170-M6-37	I型六角螺母 I-type hexagonal nut	1	Y	0.002	Meta1	
22	BGB/T93-6-37	标准弹簧垫圈 Standard spring washer	1	Y	0.0001	Meta1	
23	BGB/T97.1-6-37	平垫圈 Flat washer	2	Y	0.0001	Meta1	
24	CF4-320401-0	后制动臂 Rear brake arm	1	Y	0.0965	Meta1	

15. 后轮

序号 No.	零件代号 Part code	零件名称 Part Name	数量 Amount	是否 维修 Y/N Mainte- nance	重量 Weight	属性 Property	备注 Notes
25	CF3-820000-0	后轮组合 Rear Combination	1	Y	7.933		
26	BGB/T276-1994	滚动轴承 6202-2RS Bearing 6202-2RS	2	Y	0.044	Meta1	
27	CF3-820401-0	支承圈 Support ring	1	Y	0.002	Rubber	
28	CF3-820001-0	衬套 Bush	1	Y	0.056	Meta1	
29	CF3-821000-0	后轮毂 Rear Hub	1	Y	4.81	Aluminium	
30	JS150-21-3	O形圈 O-ring	1	Y	0.001	Rubber	
31	CF3-822000-0	油封 SEAL	1	Y	0.005	Rubber	
32	CY80-14-11	减震块 Shock Block	4	Y	0.039	Rubber	
33	BGB/T2983-3.25-18P-RA6	后轮外胎3.25-18 Rear tire 3.25-18	1	Y	1.92	Rubber	
34	BGB/T7036.2-3.25-18P-000	后轮内胎3.25-18 Rear Inner Tube 3.25-18	1	Y	0.9	Rubber	
35	JS150-24-3	链轮轴 Chain wheel	1	Y	0.088	Meta1	
36	BGB/T6172.1-M8-31	2型全金属六角锁紧螺母 2-type all-metal hexagon locking nut	4	Y	0.005	Meta1	
37	CF3-910201-0	传动盖 Transmission Cover	1	Y	0.33	Aluminium	
38	JS150-24-2	链轮 Sprocket	1	Y	0.85	Meta1	
39	BGB/T14212-08MB-120	链条08MB-120 Chain 08MB-120	1	Y	1.17	Meta1	
40	CA3-910402-0	止动垫片 Stop washer	2	Y	0.008	Meta1	
41	BGB/T5783-M8×35-31	六角头螺栓 Hexagon head bolt	4	Y	0.017	Meta1	
42	BGB/T276-6004-2Z	滚动轴承 Rolling	1	Y	0.0655	Meta1	
43	CY80-0208-01	油封 SEAL	1	Y	0.0095	Meta1	
44	CF3-910000-0	联轴器组合 Coupling combinations	1	Y	2.617		
45	CF0-000006-0	后轮左衬套 Left rear wheel hub	1	Y	0.0885	Meta1	
46	CF0-015000-0	左链调节器 The left chain adjuster	1	Y	0.1565	Meta1	
47	CF0-015402-0	张紧板1 Tension Plate 1	1	Y	0.1045	Meta1	
48	CF0-000014-0	链轮轴螺母 Chain wheel nut	1	Y	0.0255	Meta1	
49	CF0-000003-0	后轮轴 Rear Axle	1	Y	0.37	Meta1	

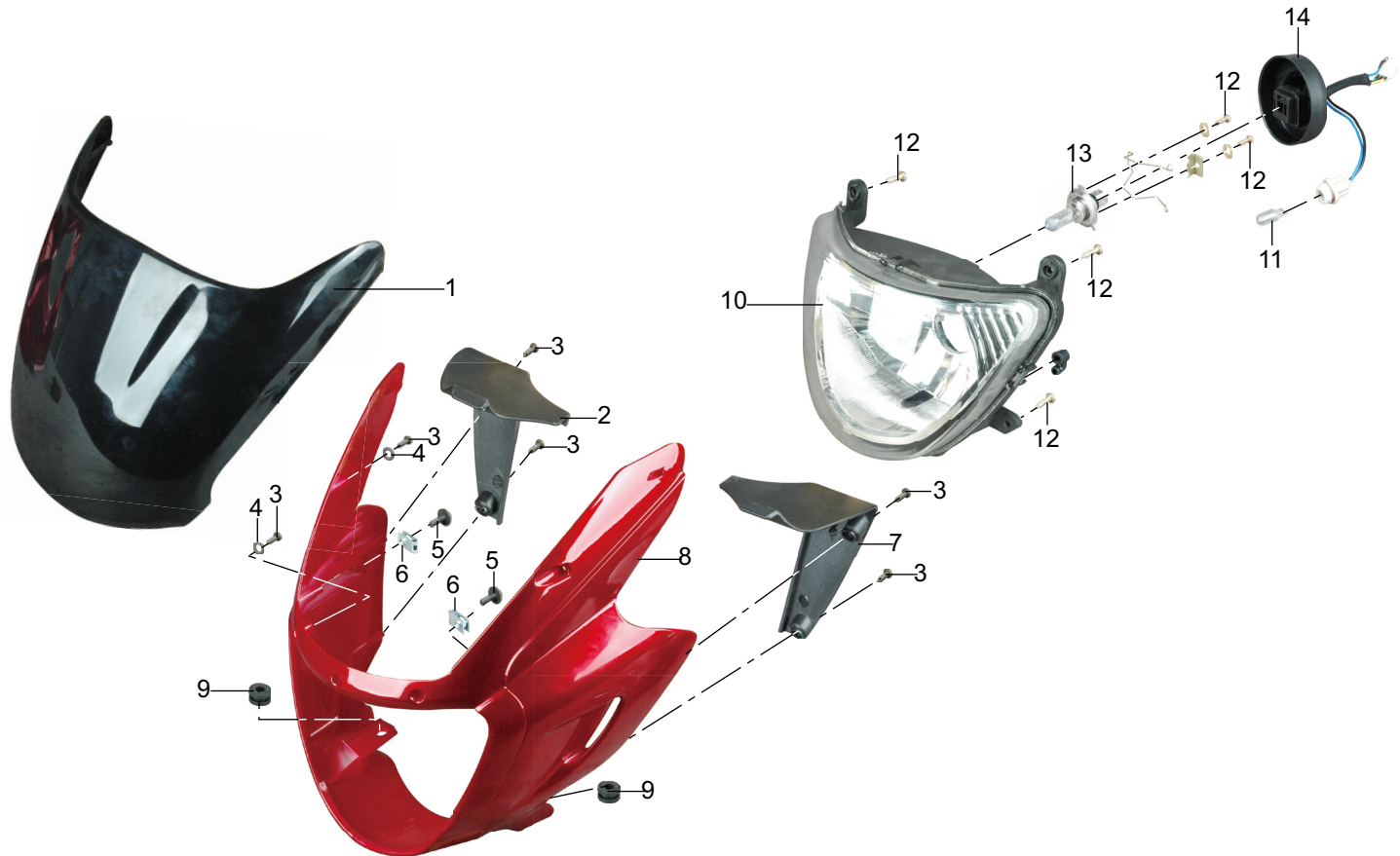
16. Instrumentation



16. 仪表

序号 No.	零件代号 Part code	零件名称 Part Name	数量 Amount	是否 维修 Y/N Mainte- nance	重量 Weight	属性 Property	备注 Notes
1	CF5-400000-0	车速里程表 Speedometer	1	Y	1.02		
2	CF4-260000-0	速度计软轴 Speedometer flexible shaft	1	Y	0.018		
3	CF5-402000-0	线束 Harness	1	Y	0.015		
4	CF0-026000-0	仪表螺栓组合 Instrument bolt combination	2	Y	0.013	Meta1	
5	CF0-000507-0	总开关盖 Master switch cover	1	Y	0.036	Plastic	
6	BGB/T819.1-M4×16-07	十字槽沉头螺钉 Cross slot countersunk head screw	2	Y	0.0015	Meta1	

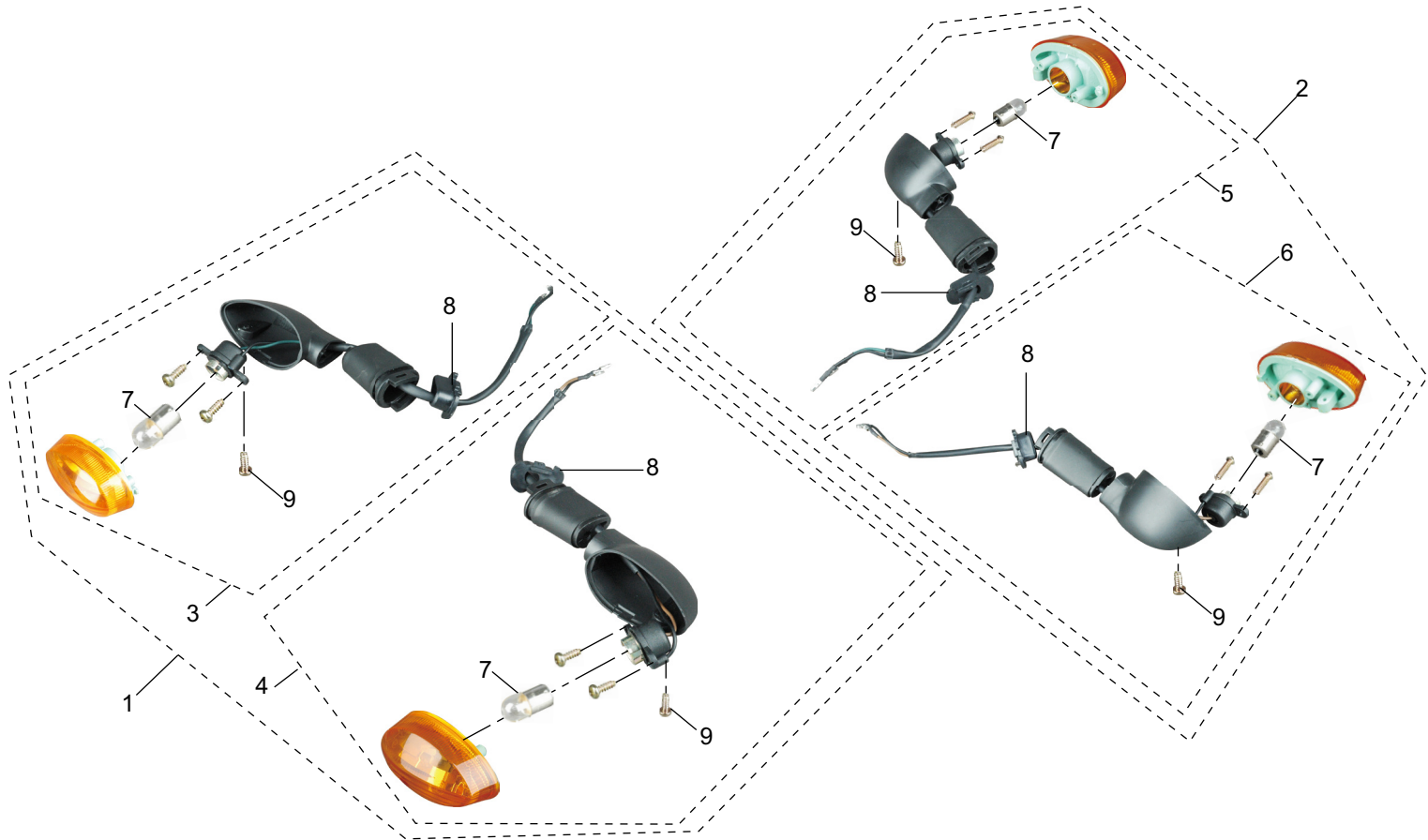
17. Head lamps



17. 前照灯

序号 No.	零件代号 Part code	零件名称 Part Name	数量 Amount	是否 维修 Y/N Mainte- nance	重量 Weight	属性 Property	备注 Notes		
1	CF0-031000-0	挡风玻璃组件	Windshield Components	1	Y	0.24	Plastic		
2	CF0-002504-0	前整流罩右内板	Right before the fairing inner panel	1	Y	0.0275	Plastic		
3	BGB/T845-ST4.2×13-W7	十字槽盘头自攻螺钉	Cross-slot pan head self-tapping screw	9	Y	0.0011	Metal		
4	BGB/T97.1-5-37	平垫圈	Flat washer	5	Y	0.0001	Metal		
5	BGB/T9074.1-M5×16S3L-07	螺钉和平垫圈组合件	Screw with washer	2	Y	0.005	Metal		
6	CA0-000412-0	螺母夹	Nut clip	2	Y	0.004	Metal		
7	CF0-002503-0	前整流罩左内板	Before the left fairing inner panel	1	Y	0.0275	Plastic		
8	CF0-002501-0-0T0A38	前整流罩	Pre-fairing	1	Y	0.41	Plastic	红色	Red
	CF0-002501-0-0T0A22	前整流罩	Pre-fairing	1	Y	0.41	Plastic	透明红	Transparent Red
	CF0-002501-0-0T0B07	前整流罩	Pre-fairing	1	Y	0.41	Plastic	黑色	Black
	CF0-002501-0-0T0E37	前整流罩	Pre-fairing	1	Y	0.41	Plastic	蓝色	Blue
	CF0-002501-0-0T0H33	前整流罩	Pre-fairing	1	Y	0.41	Plastic	灰色	Gray
	CF0-002501-0-0T0C12	前整流罩	Pre-fairing	1	Y	0.41	Plastic	珠光金黄	Golden Pearl
9	CY80-02-10	护孔环	Retaining ring hole	2	Y	0.0025	Rubber		
10	CF5-610000-0	前照灯	Headlight	1	Y	0.52	Plastic		
11	BGB15766.1-12W5W	位置灯泡12V5W W2.1×9.5d	Position light bulb 12V5W W2.1 × 9.5d	1	Y	0.0005			
12	BGB/T845-ST4.8×16-W2	十字槽盘头自攻螺钉	Cross-slot pan head self-tapping screw	4	Y	0.0025	Metal		
13	BGB15766.1-12VHS1	大灯灯泡12V35/35W	Headlight bulb 12V35/35W	1	Y	0.021			
14	CF5-610602-0	防水胶套	Waterproof pouches	1	Y	0.056	Rubber		

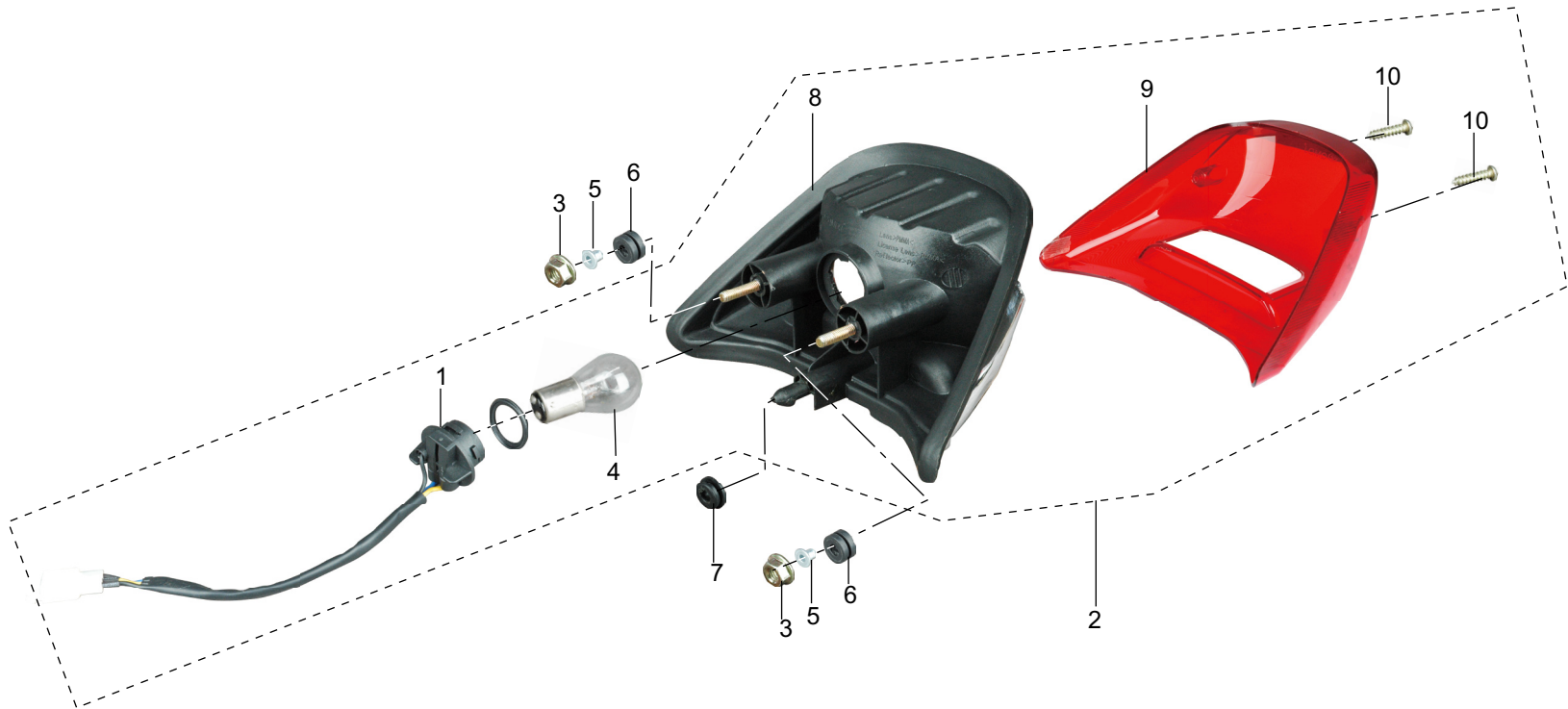
18. Turn lights



18. 转向灯

序号 No.	零件代号 Part code	零件名称 Part Name	数量 Amount	是否 维修 Y/N Mainte- nance	重量 Weight	属性 Property	备注 Notes
1	CF5-620000-0	前转向灯 Before turning lamp	1	Y	0.424		
2	CF5-640000-0	后转向灯 After the turn lights	1	Y	0.424		
3	CF5-622000-0	前转向灯(右) Before turning light (right)	1	Y	0.106		
4	CF5-621000-0	前转向灯(左) Before turning light (left)	1	Y	0.106		
5	CF5-642000-0	后转向灯(右) After the turn signal (right)	1	Y	0.106		
6	CF5-641000-0	后转向灯(左) After the turn signal (left)	1	Y	0.106		
7	BGB15766.1-12VR10W	灯泡 Bulb	4	Y	0.01		
8	CF5-621505-0	安装板 Mounting plate	4	Y	0.0035	Plastic	
9	BGB/T845-ST2.9×12	十字槽盘头自攻螺钉 Cross-slot pan head self-tapping screw	4	Y	0.002	Meta1	

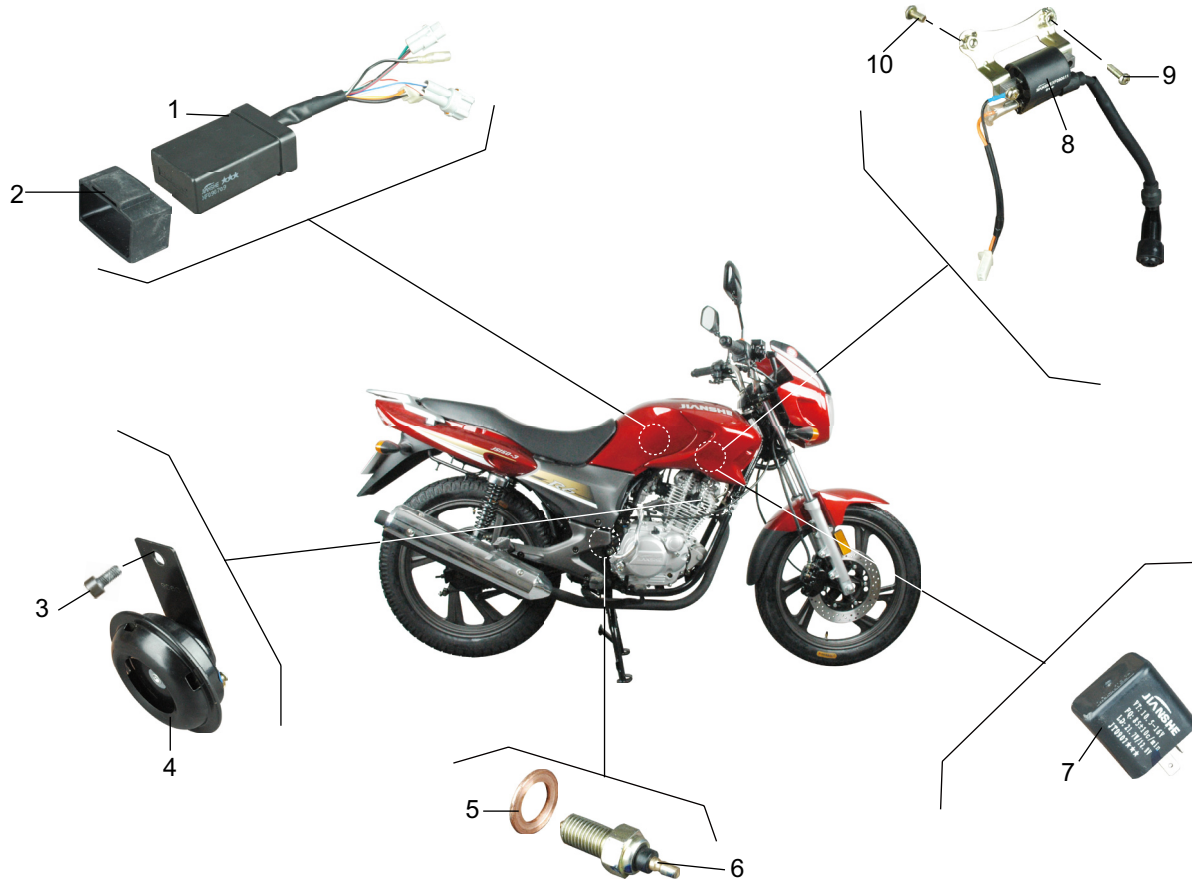
19. Taillight



19. 尾灯

序号 No.	零件代号 Part code	零件名称 Part Name	数量 Amount	是否 维修 Y/N Mainte- nance	重量 Weight	属性 Property	备注 Notes
1	CF5-631000-0	线束 Harness	1	Y	0.023		
2	CF5-630000-0	尾灯 Taillight	1	Y	0.299		
3	BGB/T6177.1-M6-32	六角法兰面螺母 Hexagon flange nut	2	Y	0.003	Metal	
4	BGB15766.1-12VP21/5W	灯泡12V 21/5W Bulb 12V 21/5W	1	Y	0.0085		
5	QT0-000406-0	尾灯衬套 Taillight bush	2	Y	0.006	Rubber	
6	CA0-000614-0	尾灯胶套 Taillight sleeve	2	Y	0.004	Rubber	
7	CF0-000602-0	胶垫1 Pad 1	1	Y	0.006	Rubber	
8	CF5-630501-0	反光镜 Mirror	1	Y	0.1595	Plastic	
9	CF5-630502-0	灯罩 Shade	1	Y	0.107	Plastic	
10	BGB845-ST4.2×16	十字槽盘头自攻螺钉 Cross-slot pan head self-tapping screw	2	Y	0.0005	Metal	

20-1. Electric



20-1. 电器

序号 No.	零件代号 Part code	零件名称 Part Name		数量 Amount	是否 维修 Y/N Mainte- nance	重量 Weight	属性 Property	备注 Notes
1	F25-D20000-0	Z CDI元件	Z CDI components	1	Y	0.163		
2	F25-D20601-0	箍带	Hoop with	1	Y	0.001	Plastic	
3	BGB/T70.1-M6×12-37	内六角圆柱头螺钉	Hexagon socket head cap screws	1	Y	0.145	Meta1	
4	CF5-710000-0	喇叭组件	Speaker Components	1	Y	0.006		
5	F25-300409-0	垫圈	Washers	1	Y	0.009	Meta1	
6	F25-D12000-0	火花塞帽组合	Spark plug cap portfolio	1	Y	0.02	Meta1	
7	JS150-53	闪光继电器	Flashing relay	1	Y	0.0315		
8	F25-D10000-0	点火线圈	Ignition Coil	1	Y	0.196		
9	BGB/T818-M6×12-02	十字槽盘头螺钉	Cross-slot pan head screws	2	Y	0.005	Meta1	
10	BGB/T823-M6×20-02	十字槽小盘头螺钉	Small cross-slot head screw	2	Y	0.0055	Meta1	

20-2. Electric



20-2. 电器

序号 No.	零件代号 Part code	零件名称 Part Name	数量 Amount	是否 维修 Y/N Mainte- nance	重量 Weight	属性 Property	备注 Notes
1	QH0-029000-0	辅助继电器 Auxiliary Relay	1	Y	0.0515		
2	F25-D40000-0	整流调节器 Rectifier regulator	1	Y	0.1135	Meta1	
3	BGB/T70.1-M6×25-32	内六角圆柱头螺钉 Hexagon socket head cap screws	2	Y	0.0065	Meta1	
4	JS150-57-03	负极导线 Anode wire	1	Y	0.029		
5	QC0-023000-0	保护器 Protector	1	Y	0.0135		
6	CF5-310000-0	蓄电池组合 Battery Combination	1	Y	2.27		
7	JS150-57-02	正极导线 Positive wire	1	Y	0.007		
8	CA0-016000-0	电缆箍带1 Cable hoop with a	3	Y	0.004	Plastic	
9	CF5-510000-0	总开关锁 Master switch lock	1	Y	0.344		
10	JS150-00-07	起动继电器 Starting relay	1	Y	0.169		
11	CF5-530000-0	后制动开关 Rear brake switch	1	Y	0.02		
12	BGB/T70.1-M6×25-32	内六角圆柱头螺钉 Hexagon socket head cap screws	2	Y	0.008	Meta1	
13	CF0-008000-0	总开关衬板 Master switch Lining	1	Y	0.0295	Meta1	
14	CF5-320000-0	电缆 Cable	1	Y	0.159		

零件号码索引
Parts No Index Chart

件号	图号
BGB/T14212-08MB-120	15-39
BGB/T16674.1-M10×55-37	1-9
BGB/T16674.1-M10×80-37	11-4
BGB/T16674.1-M6×12-37	9-12
BGB/T16674.1-M6×12-37	9-26
BGB/T16674.1-M6×12-37	10-18
BGB/T16674.1-M6×16-32	6-7
BGB/T16674.1-M6×16-32	9-24
BGB/T16674.1-M6×16-32	13-16
BGB/T16674.1-M6×20-37	8-9
BGB/T16674.1-M6×22-37	7-26
BGB/T16674.1-M6×25-32	6-2
BGB/T16674.1-M8×12-32	1-22
BGB/T16674.1-M8×25-32	13-11
BGB/T16674.1-M8×30-32	12-9
BGB/T16674.1-M8×50-37	9-9
BGB/T16674.1-M8×55-32	1-13
BGB/T16674.2-M10×1.25×35-36	7-15
BGB/T16674.2-M10×1.25×40-37	10-20
BGB/T276-1994	14-7
BGB/T276-1994	15-26
BGB/T276-6004-2Z	15-42
BGB/T2983-2.75-18P-FA6	14-11
BGB/T2983-3.25-18P-RA6	15-33
BGB/T308-15/64"	11-23
BGB/T5781-M10×35-37	9-20
BGB/T5781-M12×1.75×25-32	9-4
BGB/T5782-M6×35-37	15-20
BGB/T5783-M6×20-36	2-13
BGB/T5783-M6×30-37	1-16
BGB/T5783-M8×35-31	15-41
BGB/T6170-6-32	9-30
BGB/T6170-M5-21	4-6
BGB/T6170-M6-32	12-20
BGB/T6170-M6-37	1-17
BGB/T6170-M6-37	7-7
BGB/T6170-M6-37	15-21
BGB/T6170-M8-37	15-5
BGB/T6172.1-M8-07	10-10

件号	图号
BGB/T6172.1-M8-07	15-8
BGB/T6172.1-M8-31	15-36
BGB/T6172.2-M6-37	8-14
BGB/T6173-M10×1.25-02	11-15
BGB/T6177.1-M10-37	2-8
BGB/T6177.1-M10-37	11-42
BGB/T6177.1-M6-32	13-4
BGB/T6177.1-M6-32	19-3
BGB/T6177.2-M10×1.25-32	10-22
BGB/T6187.1-M8-32	1-12
BGB/T6187.1-M8-32	1-15
BGB/T6187.2-M12×1.25-37	10-9
BGB/T6187.2-M14×1.5-36	14-2
BGB/T6187.2-M14×1.5-37	15-1
BGB/T70.1-M10×1.25×25-37	11-32
BGB/T70.1-M10×1.25×35-37	11-31
BGB/T70.1-M10×30-37	2-10
BGB/T70.1-M10×35-36	13-14
BGB/T70.1-M5×25-90	12-7
BGB/T70.1-M5×8-90	12-6
BGB/T70.1-M6×12-37	3-5
BGB/T70.1-M6×12-37	20-1-3
BGB/T70.1-M6×20-36	2-2
BGB/T70.1-M6×25-32	20-2-3
BGB/T70.1-M6×25-32	20-2-12
BGB/T70.1-M8×20-37	1-3
BGB/T70.1-M8×30-32	9-2
BGB/T70.1-M8×40-37	1-5
BGB/T7036.2-2.75-18P-000	14-12
BGB/T7036.2-3.25-18P-000	15-34
BGB/T818-M5×10-02	11-44
BGB/T818-M5×20-32	8-3
BGB/T818-M5×44-0B	8-2
BGB/T818-M6×12-02	12-1
BGB/T818-M6×12-02	20-1-9
BGB/T818-M6×20-07	11-35
BGB/T819.1-M4×16-07	16-6
BGB/T819.1-M6×70-0B	7-1
BGB/T819-M4×8-01	11-6

件号	图号
BGB/T823-M5×10-02	12-8
BGB/T823-M6×20-02	20-1-10
BGB/T845-ST2.9×12	18-9
BGB/T845-ST3.5×10-W2	12-5
BGB/T845-ST4.2×13-W2	6-10
BGB/T845-ST4.2×13-W7	17-3
BGB/T845-ST4.8×16-W2	17-12
BGB/T848-10-31	13-13
BGB/T848-8-32	13-10
BGB/T894.1-12-37	2-11
BGB/T896-9-B7	11-19
BGB/T9074.1-M5×10S2L-32	10-16
BGB/T9074.1-M5×16S3L-07	17-5
BGB/T9074.1-M6×12S1S-31	9-32
BGB/T9074.1-M6×12-S1S-32	11-30
BGB/T9074.1-M6×12S3N-07	3-4
BGB/T9074.1-M6×16S2L-32	1-18
BGB/T9074.1-M6×16S2L-32	2-4
BGB/T9074.1-M6×16S2L-32	4-4
BGB/T9074.1-M6×16S2L-37	4-12
BGB/T9074.1-M6×16S2N-32	13-7
BGB/T9074.1-M6×20S3N-02	12-15
BGB/T9074.1-M6×20S3N-07	3-13
BGB/T9074.1-M6×25S2L-32	4-5
BGB/T91-2×18-W7	10-13
BGB/T91-2×18-W7	11-10
BGB/T91-2×18-W7	15-7
BGB/T923-M8-27	9-6
BGB/T93-10-36	7-16
BGB/T93-10-B7	9-21
BGB/T93-5-B1	4-8
BGB/T93-6-32	9-29
BGB/T93-6-37	15-22
BGB/T93-6-W7	8-13
BGB/T96.1-5-31	4-7
BGB/T97.1-10-37	2-9
BGB/T97.1-10-37	11-41
BGB/T97.1-14-36	14-3
BGB/T97.1-5-32	6-9

件号	图号
BGB/T97.1-5-37	17-4
BGB/T97.1-6-37	11-9
BGB/T97.1-6-37	11-37
BGB/T97.1-6-37	15-23
BGB/T97.1-8-37	8-12
BGB/T97.1-8-37	9-8
BGB/T97.1-8-37	11-24
BGB/T97.1-8-37	15-9
BGB/T97.4-6-32	9-28
BGB15766.1-12VHS1	17-13
BGB15766.1-12VP21/5W	19-4
BGB15766.1-12VR10W	18-7
BGB15766.1-12VW5W	17-11
BGB845-ST4.2×16	19-10
CA0-000007-0	9-16
CA0-000008-0	9-17
CA0-000009-0	9-15
CA0-000010-0	9-13
CA0-000401-0	12-10
CA0-000412-0	17-6
CA0-000603-0	1-2
CA0-000605-0	12-11
CA0-000609-0	9-22
CA0-000614-0	19-6
CA0-006000-0	1-20
CA0-011000-0	9-14
CA0-016000-0	20-2-8
CA0-025000-0	4-10
CA3-203000-0	9-11
CA3-312401-0	12-13
CA3-910402-0	15-40
CA4-100001-0	7-2
CA4-100401-0	8-6
CA4-101003-0	8-7
CA4-102201-0	8-11
CA4-102601-0A	8-8
CA4-310001-0	15-17
CA4-310401-0	15-19
CA4-310701-0	15-12

件号	图号
CA4-310702-0	15-15
CA4-312000-0	15-14
CA4-314000-0	15-16
CA4-320701-0	15-18
CA4-351002-0	7-8
CA4-351201-0	7-9
CA4-354000-0	7-6
CA5-531000-0	7-12
CA9-001000-0	13-18
CE0-000013-0	11-5
CE0-015601-0	11-3
CE4-100301-0	7-21
CE4-100602-0	7-3
CE4-420000-0	12-22
CF0-000002-0	14-16
CF0-000003-0	15-49
CF0-000004-0	1-8
CF0-000005-0	15-6
CF0-000006-0	15-45
CF0-000007-0	11-11
CF0-000008-0	11-8
CF0-000010-0	10-11
CF0-000011-0	11-12
CF0-000012-0	11-13
CF0-000013-0	11-14
CF0-000014-0	15-48
CF0-000015-0	1-6
CF0-000016-0	10-17
CF0-000017-0	11-20
CF0-000018-0	11-16
CF0-000019-0	14-4
CF0-000020-0	15-10
CF0-000021-0	5-2
CF0-000201-0	13-12
CF0-000401-0	10-24
CF0-000402-0	10-23
CF0-000403-0	9-34
CF0-000404-0	9-38
CF0-000405-0	9-33

件号	图号
CF0-000406-0	9-35
CF0-000407-0	9-31
CF0-000501-0	4-11
CF0-000502-0	4-3
CF0-000503-0	1-19
CF0-000504-0	10-19
CF0-000505-0-0T0A22	12-19
CF0-000505-0-0T0A38	12-19
CF0-000505-0-0T0B07	12-19
CF0-000505-0-0T0C12	12-19
CF0-000505-0-0T0E37	12-19
CF0-000505-0-0T0H33	12-19
CF0-000506-0-0T0A22	12-2
CF0-000506-0-0T0A38	12-2
CF0-000506-0-0T0B07	12-2
CF0-000506-0-0T0C12	12-2
CF0-000506-0-0T0E37	12-2
CF0-000506-0-0T0H33	12-2
CF0-000507-0	16-5
CF0-000509-0	13-17
CF0-000511-0-0T0A22	6-8
CF0-000511-0-0T0A38	6-8
CF0-000511-0-0T0B07	6-8
CF0-000511-0-0T0C12	6-8
CF0-000511-0-0T0E37	6-8
CF0-000511-0-0T0H33	6-8
CF0-000512-0-0T0A22	12-21
CF0-000512-0-0T0A38	12-21
CF0-000512-0-0T0B07	12-21
CF0-000512-0-0T0C12	12-21
CF0-000512-0-0T0E37	12-21
CF0-000512-0-0T0H33	12-21
CF0-000513-0-0T0A22	12-4
CF0-000513-0-0T0A38	12-4
CF0-000513-0-0T0B07	12-4
CF0-000513-0-0T0C12	12-4
CF0-000513-0-0T0E37	12-4
CF0-000513-0-0T0H33	12-4
CF0-000602-0	5-4

件号	图号
CFO-000602-0	6-5
CFO-000602-0	12-3
CFO-000602-0	19-7
CFO-000604-0	12-16
CFO-000605-0	1-24
CFO-000701-0	12-17
CFO-000702-0	10-12
CFO-000703-0	11-39
CFO-000704-0	11-17
CFO-001000-0	9-27
CFO-002501-0-0T0A22	17-8
CFO-002501-0-0T0A38	17-8
CFO-002501-0-0T0B07	17-8
CFO-002501-0-0T0C12	17-8
CFO-002501-0-0T0E37	17-8
CFO-002501-0-0T0H33	17-8
CFO-002503-0	17-7
CFO-002504-0	17-2
CFO-003000-0-0T0B08	5-5
CFO-004000-0-0T0B08	5-1
CFO-004000-0-0T0C12	5-1
CFO-004000-0-0T0C12	5-5
CFO-005000-0-0T0A22	6-6
CFO-005000-0-0T0A38	6-6
CFO-005000-0-0T0B07	6-6
CFO-005000-0-0T0C12	6-6
CFO-005000-0-0T0E37	6-6
CFO-005000-0-0T0H33	6-6
CFO-006000-0-0T0A22	6-1
CFO-006000-0-0T0A38	6-1
CFO-006000-0-0T0B07	6-1
CFO-006000-0-0T0C12	6-1
CFO-006000-0-0T0E37	6-1
CFO-006000-0-0T0H33	6-1
CFO-007000-0	9-37
CFO-008000-0	20-2-13
CFO-010000-0	1-7
CFO-011000-0	13-15
CFO-012000-0	1-21

件号	图号
CFO-013000-0	1-23
CFO-014000-0	4-13
CFO-015000-0	15-46
CFO-015401-0	15-4
CFO-015402-0	15-47
CFO-016000-0	15-2
CFO-016401-0	15-3
CFO-017000-0-0T0A22	4-1
CFO-017000-0-0T0A38	4-1
CFO-017000-0-0T0B07	4-1
CFO-017000-0-0T0C12	4-1
CFO-017000-0-0T0E37	4-1
CFO-017000-0-0T0H33	4-1
CFO-019000-0	2-12
CFO-021000-0	11-7
CFO-024000-0	1-4
CFO-026000-0	16-4
CFO-031000-0	17-1
CF1-710000-0	2-5
CF1-714000-0	2-6
CF1-730000-0	2-3
CF1-760401-0	3-14
CF1-760601-0	3-11
CF1-760602-0	3-7
CF1-760701-0	3-2
CF1-760702-0	3-8
CF1-760703-0	3-9
CF1-760704-0	3-12
CF1-761000-0	3-1
CF1-762000-0	3-10
CF1-763000-0	3-3
CF3-100000-0	1-1
CF3-200001-0	9-5
CF3-200201-0	9-7
CF3-200202-0	9-3
CF3-200601-0	9-18
CF3-201000-0	9-19
CF3-311000-0-0T0A22	12-12
CF3-311000-0-0T0A38	12-12

件号	图号
CF3-311000-0-0T0B07	12-12
CF3-311000-0-0T0C12	12-12
CF3-311000-0-0T0E37	12-12
CF3-311000-0-0T0H33	12-12
CF3-312000-0	12-14
CF3-400000-0	13-1
CF3-400601-0	13-3
CF3-400602-0	13-2
CF3-403000-0	13-6
CF3-404000-0	13-5
CF3-511000-0	9-36
CF3-512000-0	9-25
CF3-520000-0	10-21
CF3-610000-0	10-1
CF3-610001-0	10-4
CF3-610002-0	10-8
CF3-611000-0	10-6
CF3-612000-0	10-7
CF3-613000-0	10-2
CF3-630000-0	11-21
CF3-640000-0	11-18
CF3-660000-0	11-2
CF3-660201-0	11-46
CF3-660501-0	11-47
CF3-661201-0	11-51
CF3-662201-0	11-49
CF3-663000-0	11-45
CF3-663001-0	11-26
CF3-663401-0	11-50
CF3-664001-0	11-38
CF3-664401-0	11-52
CF3-665601-0	11-48
CF3-670000-0	11-1
CF3-670201-0	11-40
CF3-670501-0	11-43
CF3-671001-0	11-25
CF3-671201-0	11-22
CF3-672201-0	11-34
CF3-673000-0	11-29

件号	图号	件号	图号	件号	图号
CF3-674401-0	11-28	CF5-510000-0	20-2-9	JS150-00-24	10-15
CF3-675401-0	11-53	CF5-530000-0	20-2-11	JS150-00-25	10-14
CF3-676601-0	11-33	CF5-560000-0	8-5	JS150-00-26	11-36
CF3-810000-0	14-1	CF5-570000-0	8-1	JS150-00-30	1-11
CF3-810001-0	14-13	CF5-610000-0	17-10	JS150-00-51	1-10
CF3-810201-0	14-10	CF5-610602-0	17-14	JS150-20-01	14-6
CF3-810401-0	14-14	CF5-620000-0	18-1	JS150-20-3	14-8
CF3-820000-0	15-25	CF5-621000-0	18-4	JS150-20-4	14-9
CF3-820001-0	15-28	CF5-621505-0	18-8	JS150-21-3	15-30
CF3-820401-0	15-27	CF5-622000-0	18-3	JS150-24-2	15-38
CF3-821000-0	15-29	CF5-630000-0	19-2	JS150-24-3	15-35
CF3-822000-0	15-31	CF5-630501-0	19-8	JS150-25	14-15
CF3-910000-0	15-44	CF5-630502-0	19-9	JS150-36	7-17
CF3-910201-0	15-37	CF5-631000-0	19-1	JS150-36-01	7-18
CF4-100001-0	7-14	CF5-640000-0	18-2	JS150-53	20-1-7
CF4-100601-0	7-22	CF5-641000-0	18-6	JS150-57-02	20-2-7
CF4-101000-0	7-4	CF5-642000-0	18-5	JS150-57-03	20-2-4
CF4-101001-0	8-10	CF5-710000-0	20-1-4	JS157FMJ-01	2-7
CF4-102000-0	8-4	CF5-740000-0	12-18	QB0-011000-0	4-9
CF4-210000-0	7-5	CY80-00-3	9-10	QC0-000506-2	9-1
CF4-240000-0	7-20	CY80-00-45	14-5	QC0-023000-0	20-2-5
CF4-250000-0	7-19	CY80-0208-01	15-43	QH0-029000-0	20-2-1
CF4-260000-0	16-2	CY80-02-10	9-23	QTO-000406-0	19-5
CF4-320000-0	15-11	CY80-02-10	17-9	ZA0-000407-0	6-3
CF4-320401-0	15-24	CY80-14-11	15-32	ZA0-000504-0	4-2
CF4-321000-0	15-13	F25-300409-0	20-1-5	ZA0-000603-0	6-4
CF4-350000-0	7-27	F25-701000-0	2-1	ZF0-000601-0	5-3
CF4-350001-0	7-10	F25-760401-0	3-6		
CF4-350002-0	7-11	F25-D10000-0	20-1-8		
CF4-352000-0	7-13	F25-D12000-0	20-1-6		
CF4-441000-0	13-9	F25-D20000-0	20-1-1		
CF4-442000-0	13-8	F25-D20601-0	20-1-2		
CF4-500000-0	7-23	F25-D40000-0	20-2-2		
CF4-510000-0	7-24	HK1812 GB/T290-1998	10-3		
CF4-520000-0	7-25	HK1816 GB/T290-1998	10-25		
CF5-310000-0	20-2-6	JB/T 7940.1-1995	10-5		
CF5-320000-0	20-2-14	JS150-00-07	20-2-10		
CF5-400000-0	16-1	JS150-00-15	1-14		
CF5-402000-0	16-3	JS150-00-154	11-27		



JS150-3 JS150-3 JS150-3 JS150-3 JS150-3
JS150-3 JS150-3 JS150-3 JS150-3 JS150-3
JS150-3

(第一版) 2010年2月



重庆建设摩托车股份有限公司

CHONGQING JIANSHE MOTORCYCLE CO.,LTD

地址：中国·重庆巴南区花溪工业园区建设大道1号

邮编：400054

Http://www.jianshe.com.cn

24小时热线咨询、投诉、服务电话：800-8071-888