

INNOVATION PROFESSOR IN MOTORCYCLE TECHNOLOGY

250T-5 (V5)

OWNER'S MANUAL

IMPORTANT SAFETY INFORMATION

DRIVER AND PASSENGER

250T-5 (V5) is designed only for one driver and one passenger. The total load must be within the limit specified on the specification label.

ROAD CONDITION

The motorcycle is designed only for driving on highway.

READ THIS MANUAL CAREFULLY

Pay special attention to all the sentences or paragraphs marked with WARNING in this manual.

WARNING:

Means failure to follow the instructions will cause serious injury or death.

NOTICE:

Means that if the instructions in this manual are not observed, product damage or body injury may occur.

NOTE:

Provides you with the effective method of operation.

As the manual is considered as indispensable, it should be always kept with the driver for consultation.

TO OUR CUSTOMER

Thanks for choosing the motorcycle 250T-5 (V5). For safer and more pleasant driving, a complete understanding for all the instructions in this manual is necessary. Your safety is not only ensured by your own alertness and your understanding of all operations but also related to your understanding of the mechanic performance of the motorcycle. Making inspections before driving and performing periodical maintenance are basic conditions for your safety.

When periodic maintenance or repair is necessary, please consult with our local dealer.

Wish you a pleasant drive.

The manufacturer reserves the rights to make improvement of the product at any time without prior notice and without any obligation whatever.

CONTENTS

Traffic safety	1	Seat.....	11
Important information for safe driving	2	Audio control system	12
Load	3	USB plug.....	12
Parts and controls	4	Panel and buttons.....	12
Operation guide	7	Main performance parameter.....	13
Main switch.....	7	Output line functioning drawing.....	13
Steering lock switch.....	7	Inspection before driving	14
Temperature indicator.....	8	Fuel capacity.....	14
Fuel gauge.....	8	Fuel tank capacity.....	14
Side stand indicator.....	8	Checking engine oil level.....	15
Trip reset button.....	8	Brake.....	16
Headlight illumination switch.....	9	Tire.....	18
Turning light switch.....	9	Starting the engine	20
Horn switch button.....	9	Driving the motorcycle	21
Ignition button.....	9	Driving.....	21
Headlight switch.....	9	Braking.....	22
Kill switch.....	9	Parking.....	23
Overtake light switch.....	9	Anti-theft.....	23
Steering lock.....	10	Maintenance interval	24
Rear foot pedal.....	10	Maintenance interval table.....	25

Maintenance	26	Replace engine oil.....	30
Air cleaner.....	26	Replace gearbox oil.....	31
Cooling system maintenance.....	28	Spark plug.....	32
Radiator.....	28	Battery.....	32
Coolant type.....	28	Replace the fuse.....	33
Checking coolant capacity.....	28	Tools.....	34
Engine oil.....	29	VIN number.....	35
Recommend engine oil.....	29	Guideline for storage	36
Viscosity.....	29	Technical parameter	38
Replacing engine oil and cleaning oil screen.....	30	Electrical diagram	40
Engine oil capacity.....	30		

TRAFFIC SAFETY

SAFETY CAN BE ENSURED ONLY BY DRIVER HIMSELF.

NOTICES:

A driver will always spend much time on learning driving methods and technique before driving on the highway in less traffic area.

1. Many motorcycle accidents occur due to that automobile driver cannot see the motorcycle driver. Therefore, the motorcycle driver should make all his effort to be seen clearly by automobile driver.

For example:

- Wear noticeable clothing.
- Avoid driving carelessly.

2. Many accidents occur at the crossroad, entrance or exit of parking lot and driveway. Therefore pay attention to the above places.

3. Over speed is one of the main causes for many motorcycle accidents. Please obey the traffic rules and drive within the speed limit.

4. Many motorcycle accidents occur due to insufficient experience. A new driver shall comprehend each performance of motorcycle before riding on the highway. Never lend motorcycle to inexperienced drivers.

5. Most injuries of motorcycle accidents are on head. Therefore please wear helmet and other protections, e.g. dust-tight glasses, boots and thick coat.

6. Do not ride on the expressways. If inevitable, please be careful and drive safely.

7. Avoid driving on bump road, which will result in losing control or damaging machine.

IMPORTANT INFORMATION FOR SAFE DRIVING

1. Before starting the engine, please carefully inspect the motorcycle. (Refer to Page 14).
2. For safety, please wear helmet as well as boots, gloves, dust-tight glasses and noticeable clothing;
3. The rear box or cargo box mounted by customer himself is for lightweight things only. If mounting cargo boxes on two sides of motorcycles, please load equally on both and hold tightly in order not to move around when driving. For detail, refer to page 3.
4. When driving, please hold the steering handlebars and step on the footrest.
5. Please exercise on road in less traffic area and get familiar with motorcycle performance before driving on the roadway.
6. Turn on wipers when turning or changing lane.
7. Do not drive on the road shoulder.

WARNING: ● This is a motorcycle of CVT transmission. Increase throttle ONLY after you are ready to drive.

LOAD

WARNING:

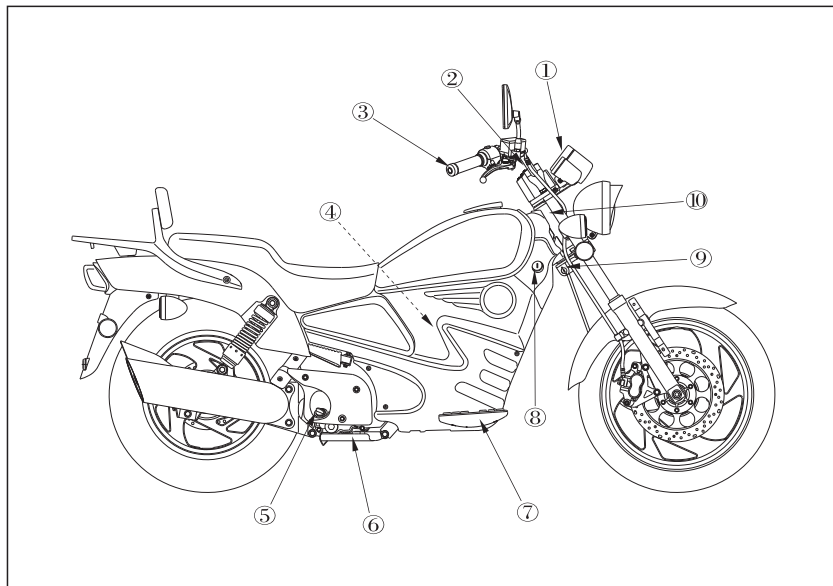
Trunk or storage equipment etc., are for lightweight loads only.

- Max. Load capacity: 150kg.
- Overload will affect the stability and controllability.
- All the loads should be hold firmly.
- Child or pets shall not be carried on the bracket or trunk, e.g. dog or cat.
- All the loads shall not be oversized.

PARTS AND CONTROLS

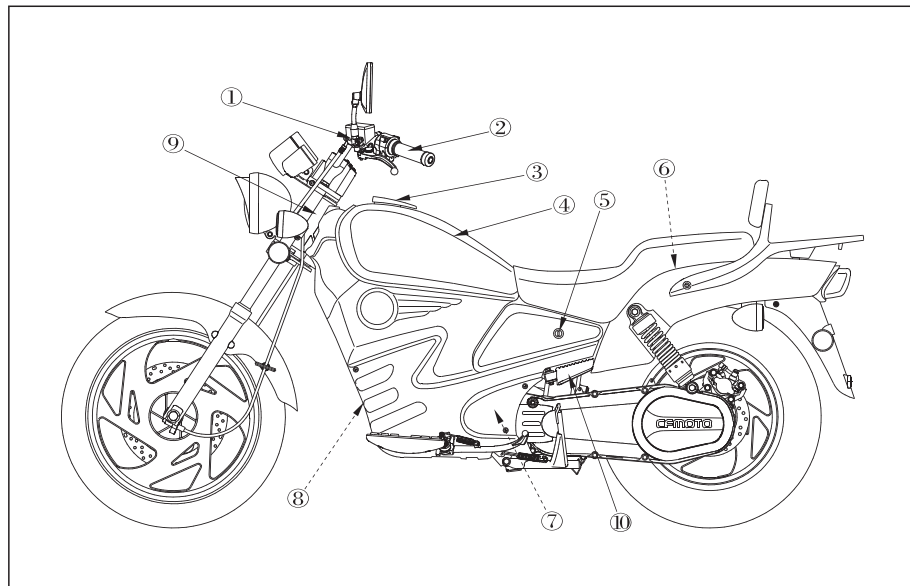
THE ASSEMBLING POSITIONS OF CONTROLS

- ① Panel and indicator
- ② Audio box control system
- ③ Throttle grip
- ④ Air cleaner
- ⑤ Oil hole/Oil dip rod
- ⑥ Main stand
- ⑦ Floor rest
- ⑧ Main switch
- ⑨ Steering lock
- ⑩ VIN



The position marked withrepresents the invisible parts.

- ① Rear Brake locking device
- ② Left grip
- ③ Fuel tank lock
- ④ Fuel tank
- ⑤ Seat lock
- ⑥ Tool box
- ⑦ Secondary water tank
- ⑧ Radiator
- ⑨ VIN plate
- ⑩ Floor pedal



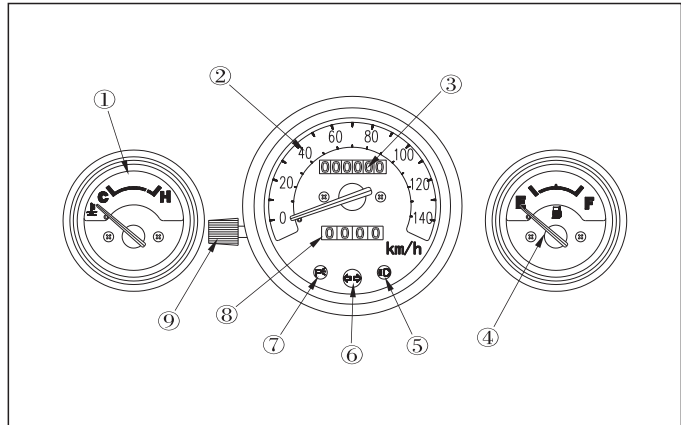
The position marked withrepresents the invisible parts.

PANEL AND INDICATOR

The controls of each indicator light and alarming light are integrated in the panel.

All the functions are instructed in the following pages.

- ① Temperature indicator
- ② Speedometer
- ③ Odometer
- ④ Fuel indicator
- ⑤ High beam indicator
- ⑥ Turning signal indicator (RH&LH)
- ⑦ Side stand parking indicator
- ⑧ Trip
- ⑨ Reset



OPERATION GUIDE

MAIN SWITCH

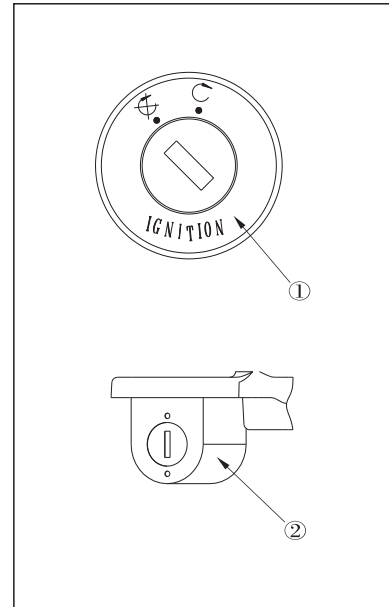
a) When at this position, the engine will be shut down, all indicators will be off, and the key can be taken out.

b) When at this position, the engine and all indicators will be open, and the key cannot be taken out.

STEERING LOCK SWITCH

Turn the handlebar to the upmost left, insert the key into steering lock, turn it clockwise by 180°, and then take out the key.

Steering handlebar will be locked.



TEMPERATURE INDICATOR

The temperature indicator ① indicates the temperature of coolant. Side C indicates that the temperature is normal, while the red area of side H indicates that the temperature is high. In that case please shut down the engine until the coolant temperature goes down.

In case the temperature frequently goes high, check coolant capacity or consult the local dealers.

NOTE: If the engine runs idle in extremely hot weather for a long time the engine may be overheated. Then shut down the engine for cooling.

FUEL GAUGE

Fuel gauge ② indicates the remaining amount of the gasoline in the fuel tank. “F” indicates the total amount of fuel is 17L. When the indicator reaches the first point of Red mark, fuel should be refilled.

The Red mark indicates that the remaining amount of the gasoline is only about 2.0L.

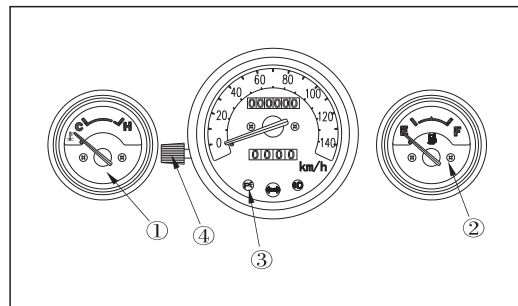
SIDE STAND INDICATOR

When side stand is down, parking indicator ③ will be on, and engine will be stopped.

When side stand returns, parking indicator will be off, and engine can be started.

TRIP RESET BUTTON

Turn this button ④ counter clockwise to clear trip reading for next trip.



HEADLIGHT ILLUMINATION SWITCH ①

Press ☰☉ button, and the high beam is on.

Press ☳☉ button, and the low beam is on.

TURNING LIGHT SWITCH ②

Press the switch to ← , and left turning light is on.

Press the switch to → , and right turning light is on.

Press down the button, and turning light will be off.

HORN SWITCH BUTTON ③

Press the button, and the horn will sound.

IGNITION BUTTON ④

Press this button, and engine can be started (Refer to P20 for details).

HEADLIGHT SWITCH ⑤

The headlight switch consists of three positions: ☼☉, ☳☉ and ● ;

☼☉ : when the switch is at this position, headlight, the front pilot light, the rear pilot light and instrument light are on.

☳☉ : when the switch is at this position, the front pilot light, the rear pilot light and instrument light are on.

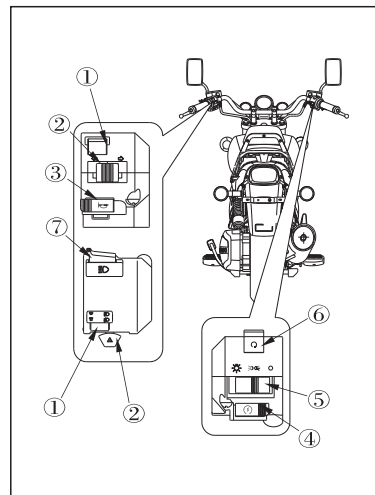
● : when the switch is at this position, headlight, the front pilot light, the rear pilot light and instrument light are off.

KILL SWITCH ⑥

Press ☒ button, and engine can be stopped. Press ☉ button, and engine can be started.

OVERTAKE LIGHT SWITCH ⑦

Press this button, and headlight high beam will be on, which indicates the signal of overtaking to the vehicle in front.

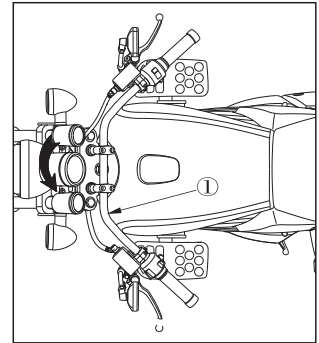


STEERING LOCK

Turn the handlebar ① to the upmost left. Insert key into steering lock and turn it clockwise by 180° (Refer to P7), and lock the steering handle bar.

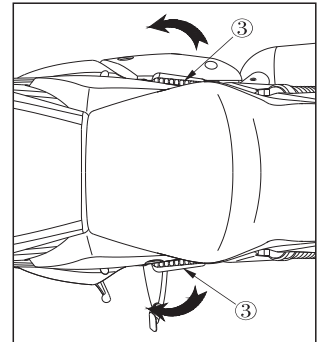
Reverse the lock procedure to unlock.

NOTE: Before turning the key to LOCK, make sure to turn the handlebar to the upmost left, or key may be damage.



REAR FOOT PEDAL

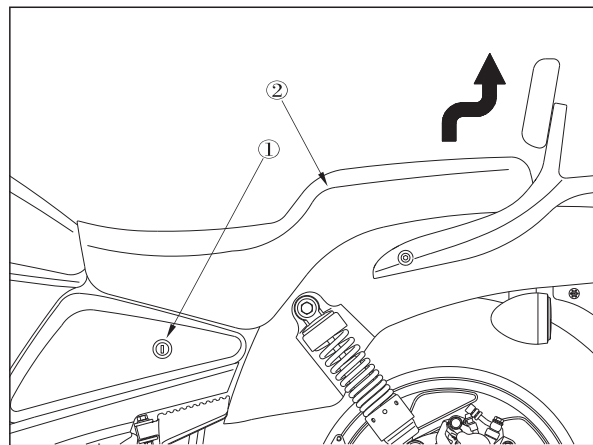
Passenger can unfold rear foot pedals (LH&RH) ③ to lay feet on. If there is no passenger, fold the pedals for safety.



SEAT

Insert the key into the seat lock ①, turn it clockwise to open the seat.

Lift the rear part of seat ②, and move backward to separate the seat from front hook,
And then lift again, and the seat will be removed.



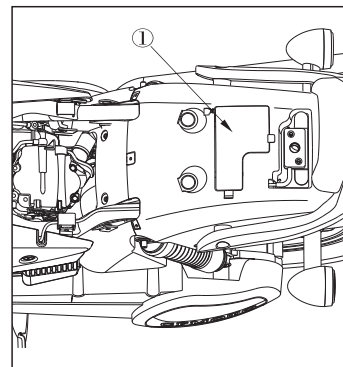
AUDIO CONTROL SYSTEM

USB PLUG

Remove the seat (Refer to P11), and toolbox cover ① can be seen.

Open toolbox cover, and a standard USB port can be seen.

Plug in flash memory stick, and enjoy music according to the following instruction.



PANEL AND BUTTONS

1. PWR: POWER BUTTON. Press this button, and the light is on. Press again, and the light is off.

2. FM: Press this button for radio. And the light will be on. (This light is off when MP3 is working.)

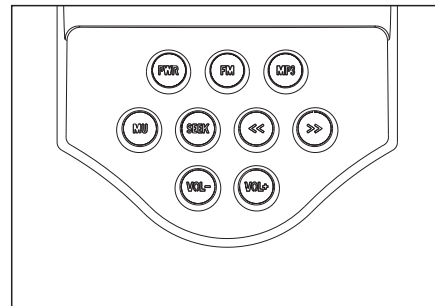
3. SEEK: Press this button for seeking channels. When finding a channel, the light winks, and the channel will be stored in “<<” and “>>” .

6 channels could be stored. Continue to seek channels by pressing this button again. The button is invalid when the MP3 is working.

4. MP3: Insert the flash memory stick and press this button , the MP3 player will be on. And the light will be on. If no U disk, there is no function and no light indicator.

5. MU: Press this button for MUTE, and light will be on.

Press again to cancel the MUTE mode, and the light will be off.



6. “<</>>” : Previous/Next button.

When MP3 is on, press this button for previous/next song.

When radio is on, press this button for previous/next-stored channel.

7. VOL “ - ” : Press this button to reduce the volume.

8. VOL “ + ” : Press this button to increase the volume.

MAIN PERFORMANCE PARAMETER

FM radio

Frequency range 87.5~108.0kHz

Noise limited sensitivity <15dB

SNR >50dB

Distortion degree <1%

MP3

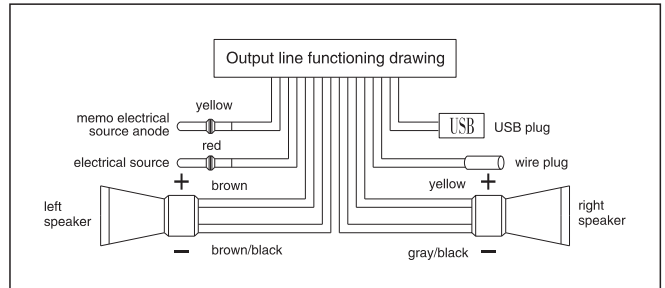
Frequency response 10~20Hz

SNR <50 dB

Text format in U disk MP3

OUTPUT LINE FUNCTIONING DRAWING

NOTE: Never contact cathode line of sound track (LH&RH) with earth, or sound system may be damaged.



INSPECTION BEFORE DRIVING

To ensure the performance and safety, a routine inspection should be performed before drive.

FUEL CAPACITY

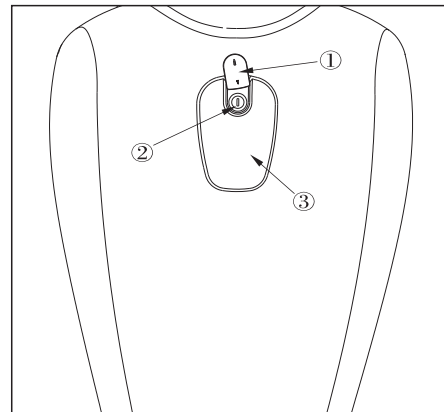
Once the fuel is insufficient, open the dust-proof cover ①, insert the key into fuel tank lock ②, turn it clockwise, take out fuel tank cap ③, and then refill the fuel tank.

Also check any fuel leakage.

FUEL TANK CAPACITY: 17.0L.

Turn the fuel tank lock ② clockwise after refilling, and press the fuel tank cap to the filling port.

Take out the key, and fuel tank will be locked.



NOTICE: Do not mix gasoline with engine oil.

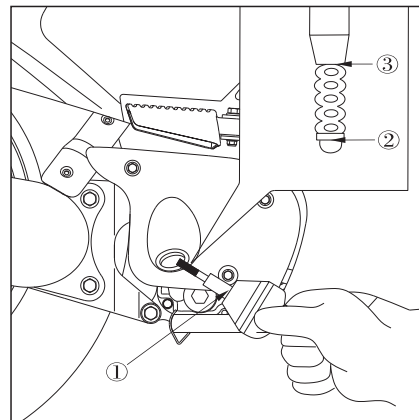
- NOTES:**
- Use fuel with octane number over 93.
 - Be careful not to allow any dust, water or other pollutants into fuel tank when refilling.

- WARNING:**
- Gasoline is flammable and it may be exploded under certain conditions, therefore refilling shall be done in a well-ventilated area after the engine has been stopped. No smoking or lighting of spark is permitted in gas station or fuel storage area.
 - Do not over fill the tank. The amount of refilled fuel shall be kept below the fuel mark. Tighten the cap after refilling.
 - Gasoline is poisonous. Faint or death may occur if gasoline is swallowed. Do keep your skin away from gasoline. Do not breathe in the vapor of gasoline. Do keep it away from children. If gasoline is swallowed, do not try to induce vomit, consult a doctor immediately.

CHECKING ENGINE OIL LEVEL

CHECKING ENGINE OIL LEVEL

1. Park the motorcycle on a level surface and support it with its main stand. Remove oil dip rod ①, wipe it clean and insert it. Do not screw in.
2. If the oil level is at the lower limit ③, fill the crankcase with SAE 15W-40/SF engine oil till the oil level is up to the upper limit mark ②. Then install oil dip rod. Check for any leakage.

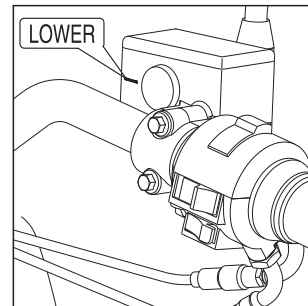


BRAKE

FRONT & REAR BRAKES

Check the brake fluid level: Brake fluid should be above the LOWER ① mark.

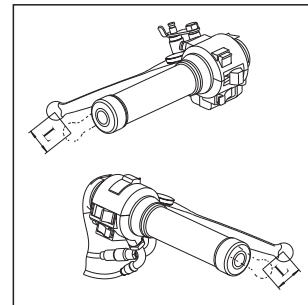
NOTICE: Use only DOT3 or DOT 4 brake fluid



FREE PLAY OF THE BRAKE LEVERS

Brake lever free play: 10~20mm (at brake lever end)

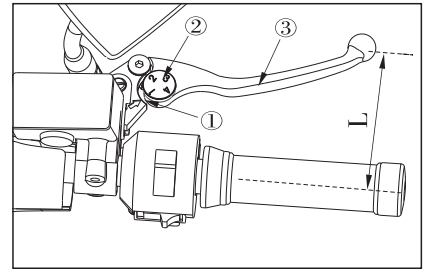
NOTE: The free play of the brake lever should be 10 to 20 mm.
If the free is out of this range, please consult the local dealer.



THE BRAKE HANDLE SPAN (F&R)

Push off the brake lever ③, and separate the wrist pin ① from brake lever. Adjust the adjusting pin ②.

Choose position 1, 2, 3, or 4 to adjust the best brake lever span for driver's hand.



BRAKE DISK WEARING

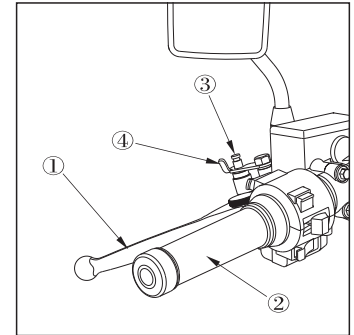
Replace the front and rear brake disk if the thickness is less than 3mm.

REAR BRAKE LOCK DEVICE

Hold the rear brake lever ① as close to the left grip ②, press the pin ③, set the yoke ④ outward and clip it in the pin groove.

Release rear brake lever. Rear brake will be locked.

To release rear wheel, set the yoke inward, and separate it from the pin groove. Pull the rear brake lever, then release it, and rear wheel lock will be released.



TIRE

This motorcycle is assembled with tubeless tires. Only tires marked with “TUBELESS TIRE APPLICABLE” can be used.

Proper tire pressure will provide you maximum stability, comfort riding and longer tire life. Please check the tire pressure periodically and adjust if necessary.

- NOTE:**
- Check the tire pressure while the tire is cool.
 - Tubeless tire has a certain self-sealing function. If the tire is punctured, it will leak slowly. Check the tire frequently if the tire is punctured especially when the tire cannot be inflated properly.

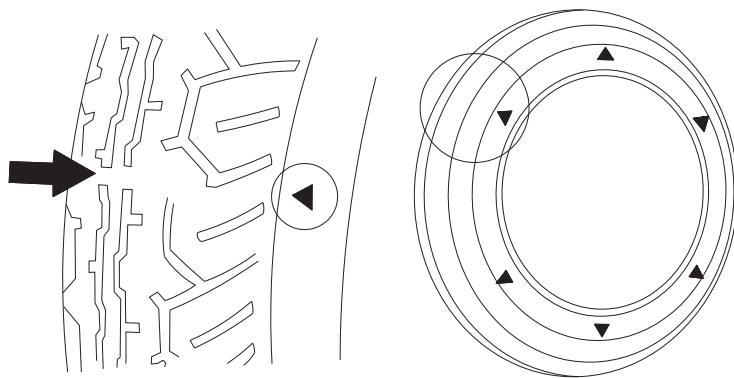
	Front tire	Rear tire
Tire size	100/90-18	150/80-15
Tire pressure under cool condition	250	280

Check the tires for any cut, nail or other sharp objects, and the rim for any indentation or deformation.

In case of any damage, consult the local dealer for repairing, replacing and adjustment of the wheel balance.

- WARNING:**
- Over inflate will cause irregular wear of the thread, which may result in accident while low inflate pressure may cause the trip and make the tire come off the rim.
 - Driving with excessively worn-out tire may cause danger due to decreased adhesion and steering stability.





When the tread height of the tire reaches the mark “△”, the tire should be replaced.

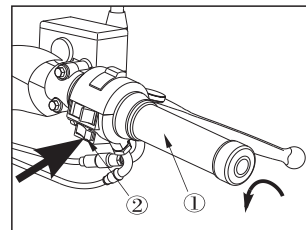


STARTING THE ENGINE

- Hold the rear brake lever to lock the rear wheel.

WARNING: ● Rear wheel may run if it is not braked.
A running wheel may cause injury.

- Insert the key into main switch, and turn to “”.
- Turn kill switch to “”.
- Return side stand.
- Turn the throttle  by 1/8 to 1/4 round.
- Press start button  to start the engine.



NOTE:

- Release the start button as soon as the engine is started. Do not press the start button while the engine is running, otherwise the engine may be damaged.
- Only when the sides stand returns and brake lever is held, the engine can be started.
- The start button must not be pressed for longer than 3 to 4 seconds. If the engine can't be started, release the start button for 10 seconds.
- Add a bit throttle and start again.
- If the motorcycle has been suspended from service for a long time or there is no fuel in the fuel tank, the starting time will be longer.

NOTE: Do not release the rear brake lever before the motorcycle starts to run.

DRIVING THE MOTORCYCLE

WARNING:

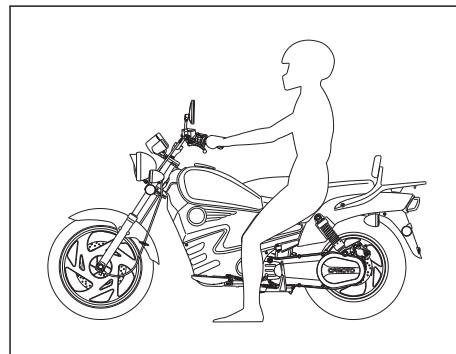
- During driving or after the engine has just stopped, the muffler is very hot. Contacting the muffler may cause serious burn. Therefore please wear trousers, avoid contracting the uncovered part of the muffler.
- Do not wear slack cloths, which may result in the sleeves or trousers getting caught with pedals, wheels and tires.
- Any attachments installed on the motorcycle must be in accordance with the regulations of the local authorities.
- Any attempt to refit or disassemble the original parts to or from the motorcycle is illegal and may cause danger.

DRIVING

NOTE: Do not keep the engine running at idle for a long time.

- 1) Sit on the seat with right foot on the footrest and left foot on the ground.
- 2) Release rear brake lever.

NOTE: Don't increase throttle so quickly before starting the motorcycle.



- 3) Increase throttle forwards slowly, and the motorcycle will start to run.
- 4) Turn throttle backwards for acceleration and release for deceleration.

WARNING:

● Body injury may occur by contacting the running wheel. Do not accelerate the motorcycle sharply, which may result in losing control.

BRAKING

1) Throttle down

Throttle down to lower the speed, and it is important to engage the front and rear brake simultaneously.

WARNING: ● When driving on wet or soft ground or in rain, take care when making a turn, acceleration or braking.


2) Engage the front and rear brake simultaneously.

When driving down a steep slope, close the throttle, and engage the front and rear brake simultaneously.

Don't brake continuously; otherwise the brake will be overheated which will result in lower brake efficiency.

WARNING: ● The front and rear brake should be engaged simultaneously. The brake efficiency may be decreased if only one brake is applied. Engaging brake frequently will seize the wheel, as well as decreasing the performance of motorcycle.

PARKING

When you want to park the motorcycle, release the throttle, then engage the front and rear brakes simultaneously till the motorcycle is stopped. Turn the start key to “”, stop the engine.

Step on the main stand with right foot, lift the motorcycle by holding the rear bracket and park the motorcycle.

Lock the handlebar and pull out the key. (Refer to page 10)

WARNING: ● Park the motorcycle on solid or level ground to avoid injury or damage to the motorcycle.

ANTI-THEFT

- 1) Lock the handlebar and never leave the key in the main switch.
- 2) Check the registration if it is correct or expired.
- 3) If possible, park the motorcycle in the garage.

Use high quality anti-theft device.

MAINTENANCE INTERVAL

The maintenance interval is based on the accumulated mileage and is the guideline for maintenance and lubrication of the motorcycle. The maintenance interval shall be shorter if the motorcycle always works in foul conditions at high speed. Please consult our local dealer for maintenance. If the motorcycle has been overhauled or collided, please consult technicians of the local dealer to check the main parts such as the frame, steering part, and suspension.

If necessary to adjust the emission, consult a specialized center.

NOTICE: To maintain the reliability and safety of the motorcycle, never refit it.

WARNING: ● To avoid injury, maintenance shall be performed after the engine has been stopped and the motorcycle has been properly parked.

NOTICE: If the motorcycle shall be suspended from service for more than one month or in winter, maintenance shall be carried out to prevent the fuel, the tire, and the battery from deteriorated or eroded.

MAINTENANCE INTERVAL TABLE

Perform the instructions in the Inspection Before Driving section (Refer to P14) prior to each periodical maintenance.

I : Inspecting, cleaning, adjusting, lubricating or replacing when necessary.

C: Cleaning R: Replacing

A: Adjusting L: Lubricating

NOTE:

* Consult the local dealer for maintenance or repairing unless the driver or the owner has the full set of special tools or is a qualified technician.

** We recommend that the maintenance of the items be done by the technicians of the local dealers.

Remarks:

(1) If the odometer reading reaches is more than specified, repeat the periodical maintenance.

(2) If environment is humid or dusty, the maintenance interval shall be shorter

(3) If riding frequently on bumpy road, maintenance must be performed.

(4) To be replaced every 2 years by experienced technicians.

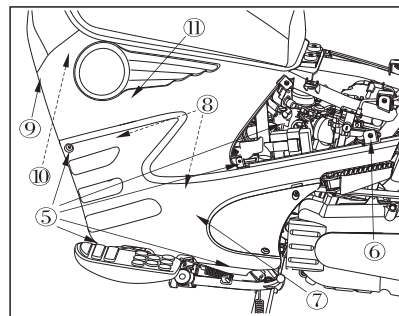
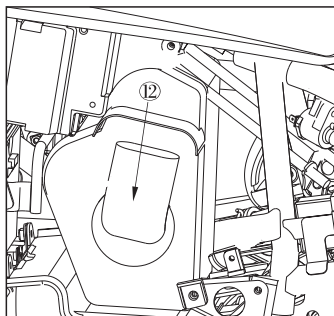
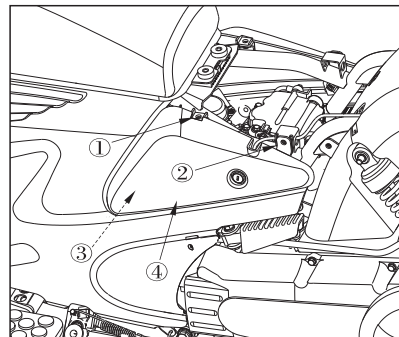
Item \ Interval		Odometer reading (KMS)/month (1) which occurs first				
		1000	4000/6	8000/12	12000/18	Page
*	Fuel pipe		I	I	I	
*	Throttle		I	I	I	
	Air cleaner (2)	I	R	R	R	26
	Spark plug		I	R	I	32
*	Valve clearance	I	I	I	I	
	Engine oil	R	R for every 3000km			29
*	Oil screen				C	
*	Carburetor idle speed	I	I	I	I	
	Coolant (4)			I		
*	Cooling system			I		
	Riving belt	I	R for every 16000km			
*	Gearbox lubricant (4)	R	I	I	I	31
	Brake shoe		I	I	I	
	Brake system	I	I	I	I	
	Brake light switch		I	I	I	
*	Brake lock	I	I	I	I	
*	Head lights		I	I	I	
**	Clutch shoe			I		
	Main/ side stand		I	I	I	
*	Suspension		I	I	I	
*	Bolts, nuts, fasteners (3)	I		I		
**	Wheel and tire		I	I	I	
**	Steering fork bearing	I			I	
*	Battery		I for every 3000km			

MAINTENANCE

AIR CLEANER

1. Remove seat (Refer to P11).
2. Remove screw ① and screw ②, separate clip ③ from frame, and remove rear left panel ④.
3. Remove front ventilation plate. (Refer to P32, Picture 32)
4. Remove 4 tapping screws ⑤ and bolt ⑥, and remove triangle plate and decorative plate ⑦.

Remove tapping screw ⑨ and 3 bolts ⑧, separate clip ⑩ from frame carefully, remove front left panel and Speaker cover ⑪, and air cleaner can be seen ⑫.



5. Remove 5 screws ① of air cleaner box cover, and remove the cover ②.

6. Remove 2 screws ③, and filter element screen ⑤.

7. Take out air cleaner filter element ④.

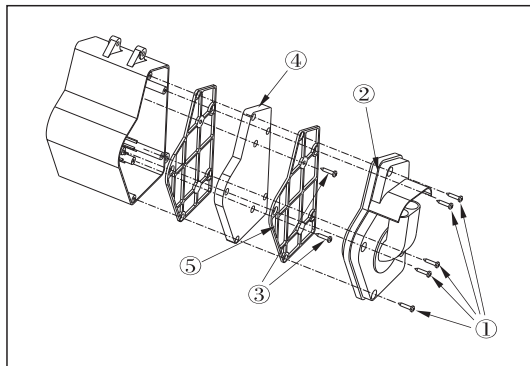
8. Clean filter element with solvent. Dry the solvent from filter element.

Dip the filter element with engine oil, and then dry it.

Replace the element if damaged.

Put the element into the air cleaner casing.

9. Reverse the removal procedure for installation.



WARNING: ● Never clean the filter element with gasoline or low flash point solvent.

COOLING SYSTEM MAINTENANCE

RADIATOR

Radiator is located below the front ventilation plate. Clean dust and mud from the radiator periodically according to the road condition.

COOLANT TYPE

Only use the high quality Ethylene Glycol based anti-freeze with erosion inhibitor, which is special for aluminum engines. This motorcycle has been filled with coolant contains 50% anti-freezer and 50% water.

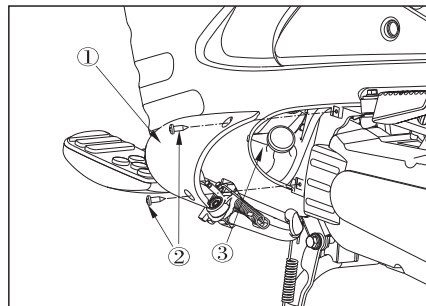
NOTE: Coolant should not be substituted with water or other liquid to avoid damage to the engine.

CHECKING COOLANT CAPACITY

Remove 2 screws ② on left decorative panel, remove left decorative panel ①, and check the coolant storage capacity in reservoir tank ③.

If the coolant level is at the LOWER mark, remove the reservoir tank cover to add coolant until the coolant level is up to the UPPER mark.

The UPPER and LOWER capacity will be 180mL and 340mL.



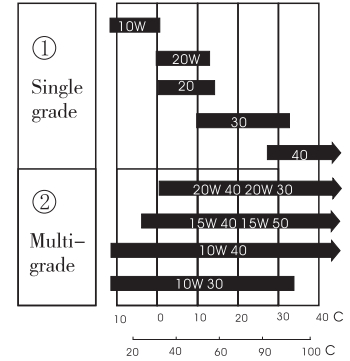
ENGINE OIL

RECOMMEND ENGINE OIL

SE Grade	SAE10W-30
SF Grade	SAE15W-40 SAE20W-50

VISCOSITY

The viscosity of the engine oil shall be in accordance with the local climate condition. The figure on the right provided a guideline for selecting the engine oil viscosity for different atmospheric temperatures.



REPLACING ENGINE OIL AND CLEANING OIL SCREEN

ENGINE OIL CAPACITY

First filling: 1.0L

Replacing: 0.8L

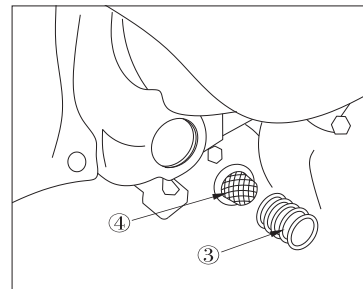
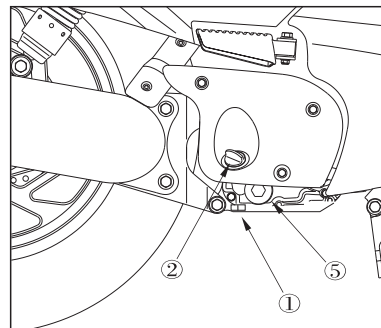
REPLACING ENGINE OIL

- Replacing interval: first time at 1000kms, then every 3000kms.
- Park the motorcycle with main stand and replace oil when the engine is still warm for complete drainage of the used oil.

(1) Remove the oil dip rod^②, and drain bolt^①.

NOTE: When the screen cover^⑤ is removed, the oil screen^③ and spring^④ can be taken out.

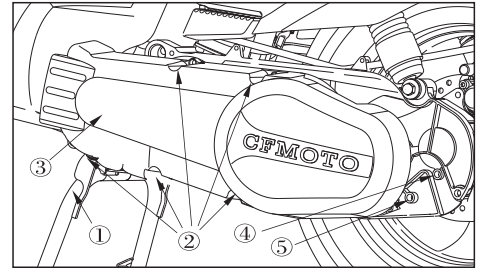
- (2) Clean the oil screen with solvent.
- (3) Assemble oil screen, spring, and oil screen cover and drain bolt.
- (4) Fill the crankcase with qualified engine oil till it reaches the UPPER mark.
- When checking the oil level, do not screw in the oil dip rod.
- (5) Install oil dip rod.



REPLACING GEARBOX OIL

Recommended gearbox oil type: SAE10W-30/SE

1. Park motorcycle with main stand ①. Remove 5 bolts ②, remove engine left side cover ③.
2. Remove the filling bolt ④ and drain bolt ⑤. Drain the gearbox oil.
3. Clean drain bolt, install and tighten it.
4. Fill gear oil through the filling hole till it overflows.
5. Install the filling bolt.



NOTE: Park motorcycle with main stand and drain the oil while the engine is still warm to ensure fast and clean drainage.

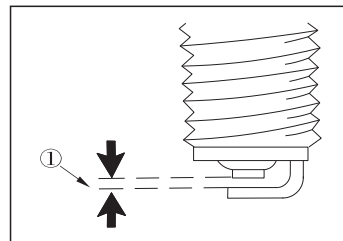
SPARK PLUG

TYPE OF SPARK PLUG: DP8EA(NGK)、D7RTC

- (1) Remove cap and remove spark plug with wrench.
- (2) Check the electrode and the central ceramic point for carbon deposit, or wearing. If necessary, replace the spark plug.

Clean off the deposit with spark plug cleaning detergent or brush.

- (3) Measure the spark plug gap ① with a feeler gauge. Bend the side electrode to adjust the gap to 0.8mm~0.9mm. The gap should not be too small.

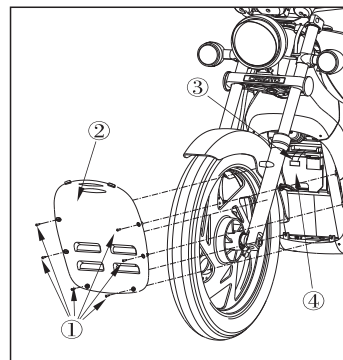


BATTERY

Battery type: 12V10Ah

- Remove 8 screws ①, remove front ventilation plate ②. Loosen the belt ③ and the +/- screws to take out the battery ④.

NOTE: When replacing battery, connect the red wire with + electrode and the black wire to - electrode, or cable and battery will be damaged.



REPLACING THE FUSE

The main fuse is located on the starter relay under the seat on front right side, with rated current capacity of 20A.

Remove starter relay coupler, and you will see it.

Remove 6 screws ① on front ventilation plate ③.

Remove front ventilation plate, fuse box ② will be seen.

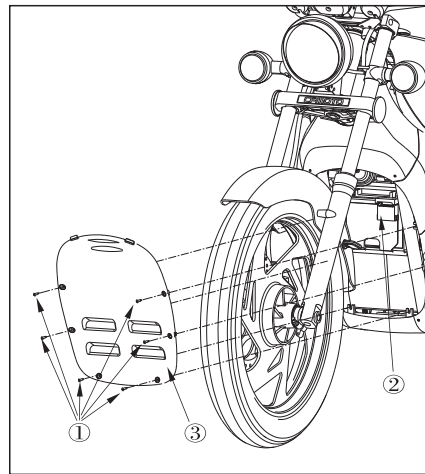
Rated current capacity of fuse: 10A&5A.

If the fuse is burnt frequently, it indicates short circuit or overload in the electrical system; you should consult the local dealer.

NOTE: Turn the main switch to “OFF” when checking or replacing fuse to avoid short circuit.

Replace the fuse: Remove the used fuse and install a new one.

WARNING: ● Only use the fuse of specified current capacity. Using incorrect fuse may result in damage to the electrical system, or cause fire. Incorrect fuse may also cause illumination failure or engine failure during night driving.



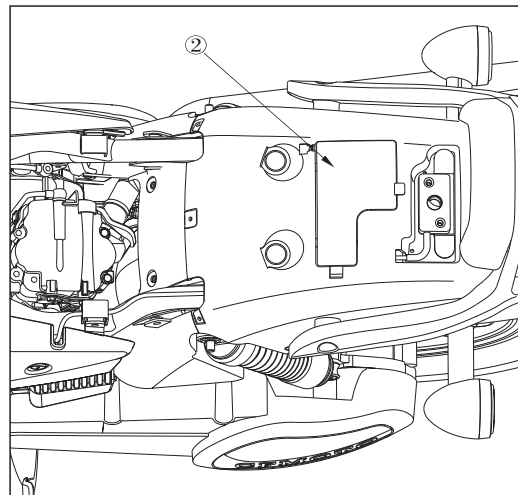
TOOLS

Remove seat (P11), and you can see tool box cover ②.

Open it, and you can see tools kit. These tools are enough for minor repairing, adjusting or part replacing.

The tools kit includes:

- 8 × 10mm open end wrench
- 14 × 17mm open end wrench
- Double-end screwdriver
- 16 × 18mm socket wrench
- Screwdriver handle
- 12 × 10mm open end wrench
- S=6 internal hex wrench
- S=5 internal hex wrench
- Tools kit



VIN NUMBER

The serial number of the frame and the engine are used for registration, applying driving license and ordering parts.

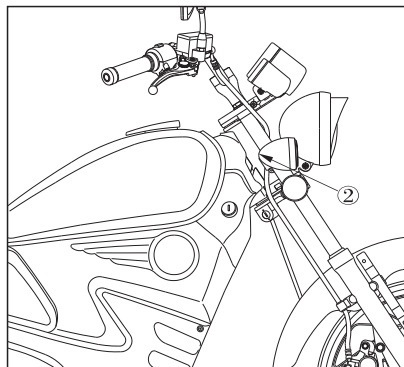
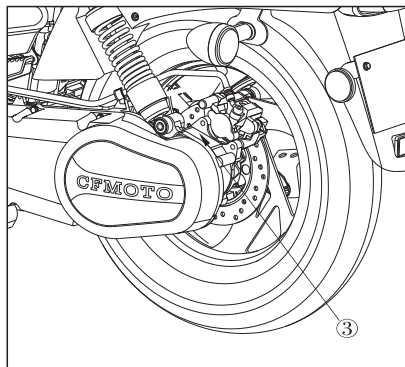
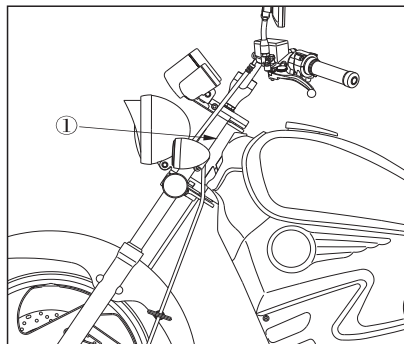
When order or replace parts, above numbers should be supplied.

The frame number (VIN) ② is located on the right of frame head, and label plate ① on the left.

The engine number ③ is marked on the rear upper part.

Frame No.:(VIN) _____

Engine No.: _____



GUIDELINE FOR STORAGE

STORAGE

If the motorcycle will be stored for a long time, such as in winter, necessary measures shall be taken to prevent damage or malfunction of parts. In addition, some repairing is necessary.

- (1) Replace the engine oil and the oil screen.
- (2) Drain the fuel tank and carburetor completely.

WARNING: ● Gasoline is flammable or explosive. Do not smoke or use fire when draining fuel.

(3) Remove the spark plug; fill the cylinder with 15 to 20 ml engine oil. Start the engine for several times to spread the oil over the cylinder.

Install the spark plug.

NOTE: When cranking the engine, be sure to ground the spark plug with cap on.

(4) Remove the battery, and store the battery in a place with no icing or direct sunlight. Charge the battery once a month.

(5) Clean all surfaces of the motorcycle and wipe dry. All the painted surfaces shall be coated with wax and then with anti-rust oil.

(6) Inflate the tires to the standard pressure. Park the motorcycle and support the tires with wooden blocks.

(7) Cover the motorcycle with a cover made of non-plastic or non-glue-coated cloth, and place it in a dry, shady and cool environment without direct sunlight.

REUSE OF THE MOTORCYCLE

1. Remove the motorcycle cover and wipe it clean. If the motorcycle has been stored for more than 4 months, replace the engine oil.
2. Check the electrolyte' s level. Charge the battery, if necessary.
3. Perform the procedures specified in Inspection Before Driving (Page 14) and drive the motorcycle at lower in areas with less traffic.

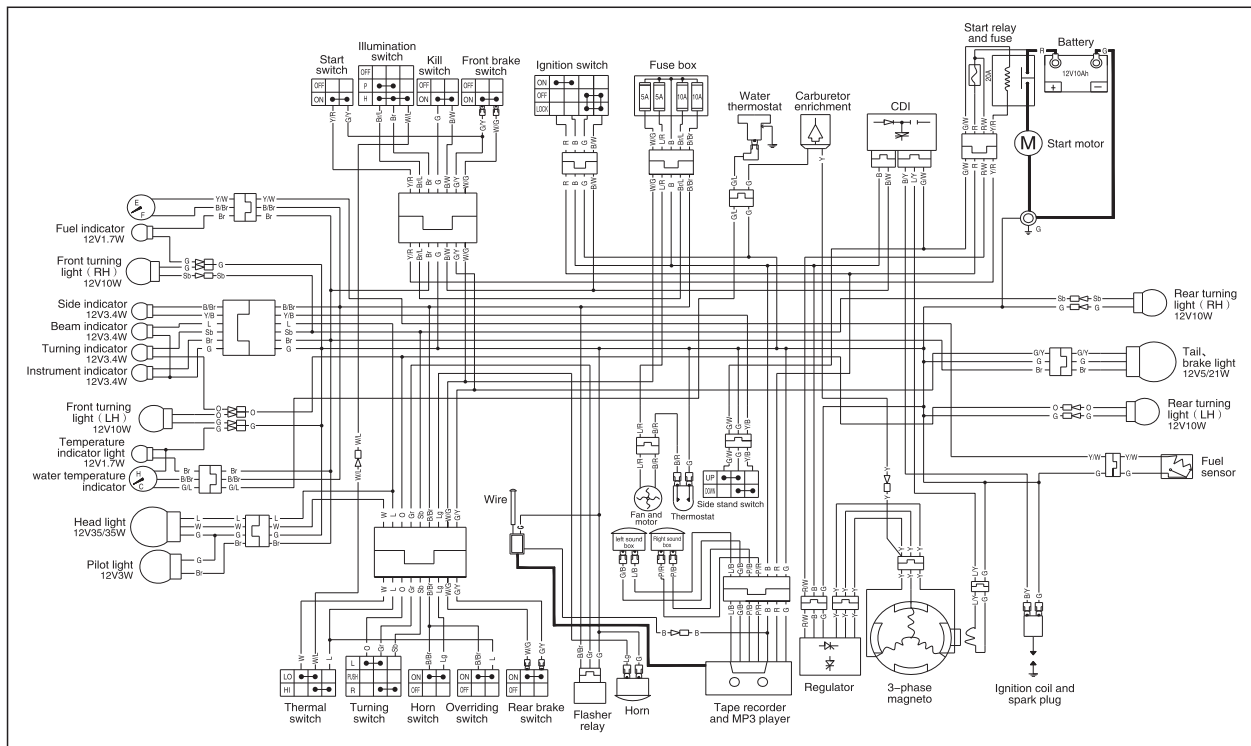
TECHNICAL PAMAMETER

DIMENSIONS	
Length	2225mm
Height	1110mm
Width	875mm
Wheel base	1490mm
Ground clearance	150mm
WEIGHT	
Wet weight	166kg
CAPACITY	
Crankcase/Gearbox	1.0L/0.18L
Fuel tank	17L
Max. Load	150kg
ENGINE	
Type	Single cylinder, water cooled, 4 stroke, vertical

Bore×stroke	72×60mm
Compression ratio	10:1
Displacement	244ml
SPARK PLUG	
Type	DR8EA (NGK)/D7RTC
Gap	0.8~0.9mm
Idle speed	1500±150r/min
TIRE	
Front	100/90-18
Rear	150/80-15
MAIN PERFORMANCE DATA	
Rated power	10.5kw/6000r/min
Max. Speed	≧100Km/h
Fuel consumption	≧3.1L/100km

TRANSMISSION	
Final reduction ratio	8.63
ELECTRICAL SYSTEM	
Battery	12V-10Ah
Alternator	AC magneto
LIGHT	
Headlight	12V35W/35W
Brake/Tail light	12V-21W/5W
Fuse	20A/10A/5A
Front turn light	12V 10W×2
Rear turn light	12V 10W×2
Pilot light	12V 3W
Turning signal light	12V 3.4W
High beam light	12V 3.4W
Instrument indicator	12V 1.7W×3
Side stand indicator	12V 3.4W

ELECTRICAL DIAGRAM



R-Red P-Pink B-Black G-Green L/R-Blue/Red G/Y-Green/Yellow Y/R-Yellow/Red Br-Brown Y-Yellow L-Blue W-White O-Orange B/Br-Black/Brown
 Br/L-Brown/Blue W/G-White/Green G/B-Green/Black B/L-Black/Blue P/B-Pink/Black B/W-Black/White B/Y-Black/Yellow Y/W-Yellow/White Lg-Light Green Gr-Grey
 G/L-Green/Blue G/R-Green/Red Sb-Sky Blue W/L-White/Blue R/W-Red/White B/R-Black/Red Y/B-Yellow/Black L/W-Blue/White L/Y-Blue/Yellow